

MAATY FIVE ARRIVAL (RNAV) Transition Routes

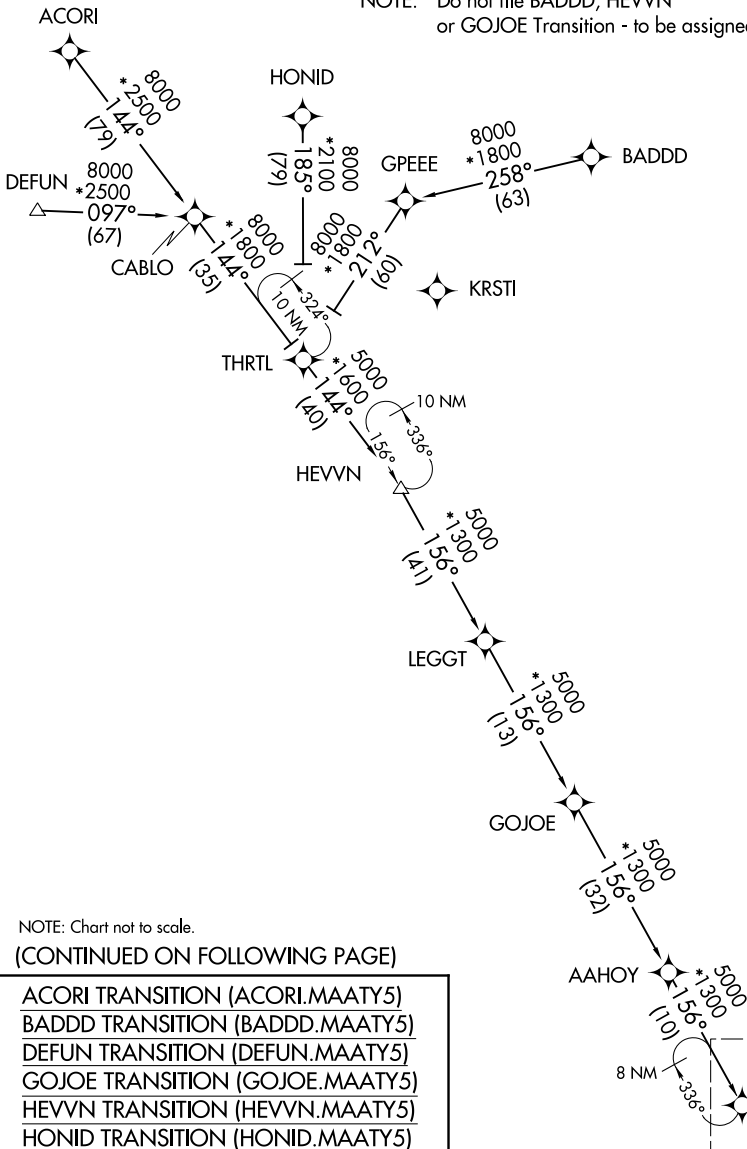
TAMPA, FLORIDA

TAMPA APP CON  
118.8 239.3  
KMCF ATIS  
133.825 270.1  
LAL ATIS  
118.025  
TPA D-ATIS  
126.45

RNAV 1 - DME/DME/IRU or GPS.

RADAR required.

NOTE: Jet and turboprop aircraft only.  
NOTE: Do not file BADDD, HEVVN  
or GOJOE Transition - to be assigned by ATC.



SE-3, 28 NOV 2024 to 26 DEC 2024

SE-3, 28 NOV 2024 to 26 DEC 2024

See following page for arrival routes.

MAATY FIVE ARRIVAL (RNAV) Arrival Routes

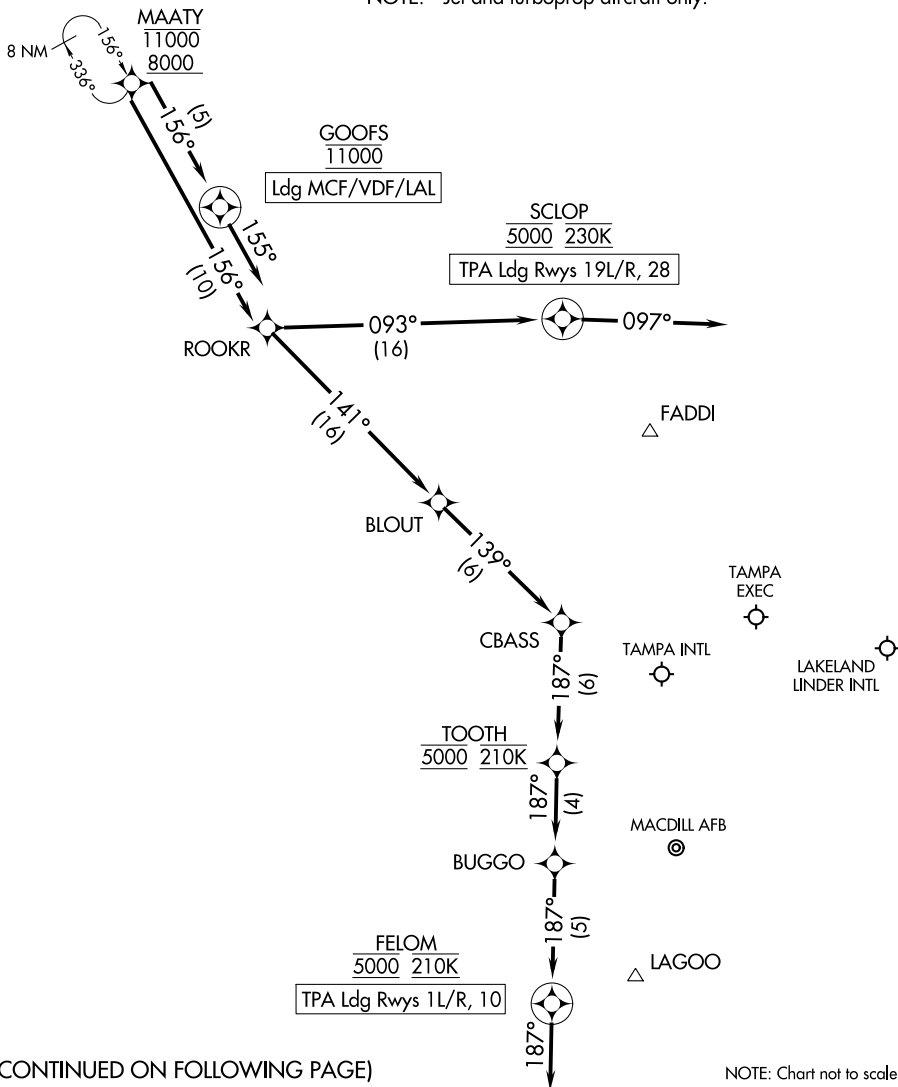
TAMPA, FLORIDA

TAMPA APP CON  
118.8 239.3  
KMCF ATIS  
133.825 270.1  
LAL ATIS  
118.025  
TPA D-ATIS  
126.45

RNAV 1 - DME/DME/IRU or GPS.

RADAR required.

NOTE: Jet and turboprop aircraft only.



(CONTINUED ON FOLLOWING PAGE)

NOTE: Chart not to scale.

MAATY FIVE ARRIVAL (RNAV) Arrival Routes

TAMPA, FLORIDA

ARRIVAL ROUTE DESCRIPTION

TPA: From MAATY on track 156° to ROOKR.

LANDING TPA RUNWAYS 1L/R, 10: From ROOKR on track 141° to BLOUT, then on track 139° to CBASS, then on track 187° to cross TOOTH at 5000 and at 210K, then on track 187° to BUGGO, then on track 187° to cross FELOM at 5000 and at 210K, then on track 187°. Expect RADAR vectors to final approach course.

LANDING TPA RUNWAYS 19L/R, 28: From ROOKR on track 093° to cross SCLOP at 5000 and at 230K, then on track 097°. Expect RADAR vectors to final approach course.

LANDING MCF/VDF/LAL: From MAATY on track 156° to cross GOOFS at 11000, then on heading 155°. Expect RADAR vectors to final approach course.

SE-3, 28 NOV 2024 to 26 DEC 2024

SE-3, 28 NOV 2024 to 26 DEC 2024