

WAAS CH 40406 W19B	APP CRS 187°	Rwy ldg 11002 TDZE 21 Apt Elev 26
--	------------------------	--

RNAV (GPS) RWY 19R

TAMPA INTL (TPA)

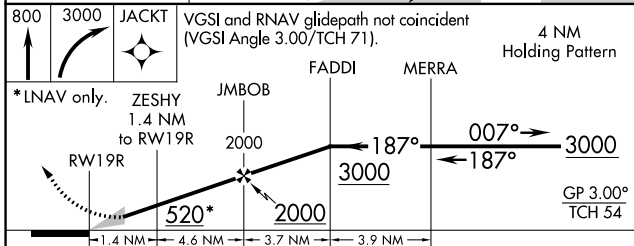
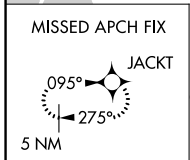
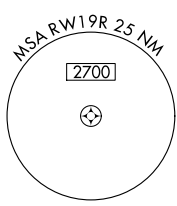
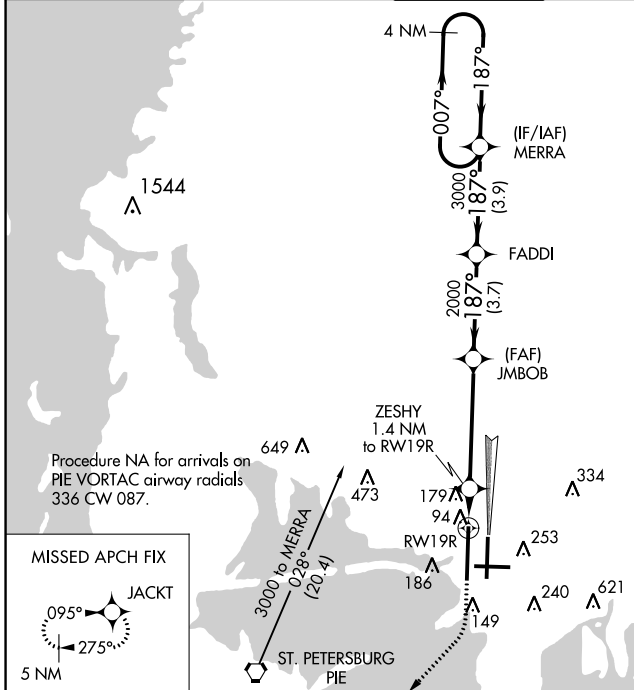
⚠ For uncompensated Baro-VNAV systems, LNAV/VNAV NA below -15°C (5°F) or above 43°C (109°F). DME/DME RNP-0.3 NA. For inop MALSR, increase LPV Cat E visibility to ¾ mile, LNAV/VNAV Cat E visibility to 1½ mile, and LNAV Cat E visibility to 1½. Simultaneous approach authorized with Rwy 19L. LNAV procedure NA during simultaneous operations. Use of FD or AP providing RNAV track guidance required during simultaneous operations. **RVR 1800 authorized with use of FD or AP or HUD to DA.

MALSR

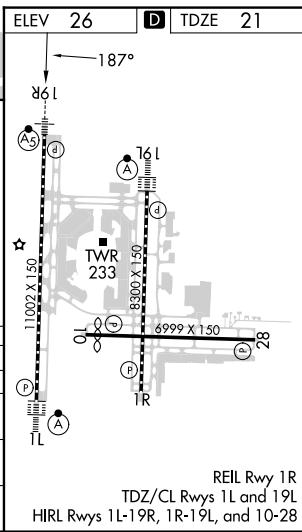


MISSED APPROACH: Climb to 800 then climbing right turn to 3000 direct JACKT and hold, continue climb-in-hold to 3000.

ARR 126.45	D-ATIS 128.475	DEP 118.5 307.175	TAMPA APP CON 119.5 269.4	TAMPA TOWER 119.5 269.4	GND CON 121.7 269.4	CLNC DEL 133.6	CPDLC
----------------------	--------------------------	-----------------------------	-------------------------------------	-----------------------------------	-------------------------------	--------------------------	-------



800	3000	JACKT	VGSI and RNAV glidepath not coincident (VGSI Angle 3.00/TCH 71).				
*LNAV only.		ZESHY 1.4 NM to RWY 19R	JMBOB	FADDI	MERRA	4 NM Holding Pattern	
		520*	2000	3000	3000	007°	3000
		1.4 NM	4.6 NM	3.7 NM	3.9 NM	187°	GP 3.00° TCH 54
CATEGORY	A	B	C	D	E		
LPV DA**	221/24		200 (200-½)				
LNAV/VNAV DA	466/50		445 (500-1)				
LNAV MDA	440/24	419 (500-½)	440/40		419 (500-¾)		
C CIRCLING	560-1	534 (600-1)	680-1¾ 654 (700-1¾)	980-3	954 (1000-3)		



SE-3, 28 NOV 2024 to 26 DEC 2024

SE-3, 28 NOV 2024 to 26 DEC 2024