

WAAS CH 49100 W 19A	APP CRS 187°	Rwy Idg TDZE 26 Apt Elev 26	8300
---	------------------------	---	-------------

RNAV (GPS) Z RWY 19L

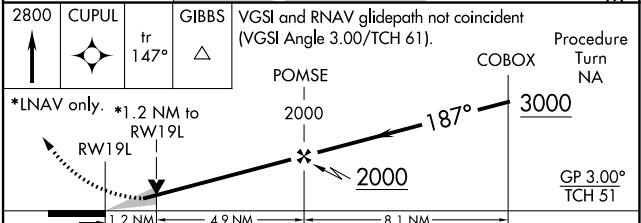
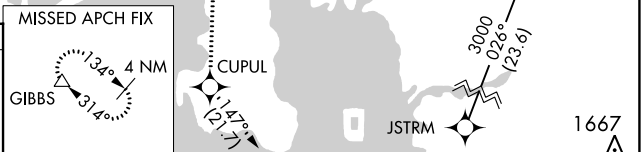
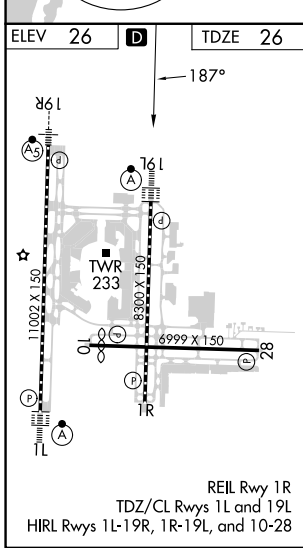
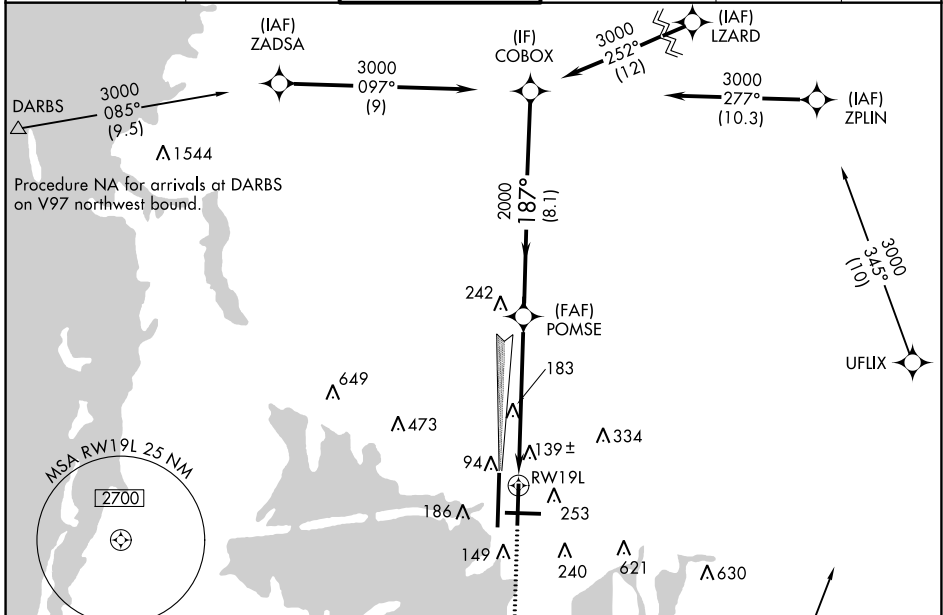
TAMPA INTL (TPA)

⚠ For uncompensated Baro-VNAV systems, LNAV/VNAV NA below -15°C (5°F) or above 43°C (109°F). DME/DME RNP-0.3 NA. Simultaneous approach authorized with Rwy 19R. LNAV procedure NA during simultaneous operations. Use of FD or AP providing RNAV track guidance required during simultaneous operations. ** RVR 1800 authorized with use of FD or AP or HUD to DA.

ALSF-2

MISSED APPROACH: Climb to 2800 direct CUPUL and on track 147° to GIBBS and hold.

ARR 126.45	D-ATIS	DEP 128.475	TAMPA APP CON 118.5 307.175	TAMPA TOWER 119.5 269.4	GND CON 121.7 269.4	CLNC DEL 133.6	CPDLC
-------------------	--------	--------------------	------------------------------------	--------------------------------	----------------------------	-----------------------	-------



CATEGORY	A	B	C	D
LPV DA**	226/24		200 (200-½)	
LNAV/VNAV DA	440/45		414 (500-¾)	
LNAV MDA	460/24	434 (500-½)	460/40	434 (500-¾)
C CIRCLING	560-1	534 (600-1)	680-1¾ 654 (700-1¾)	980-3 954 (1000-3)

SE-3, 28 NOV 2024 to 26 DEC 2024

SE-3, 28 NOV 2024 to 26 DEC 2024