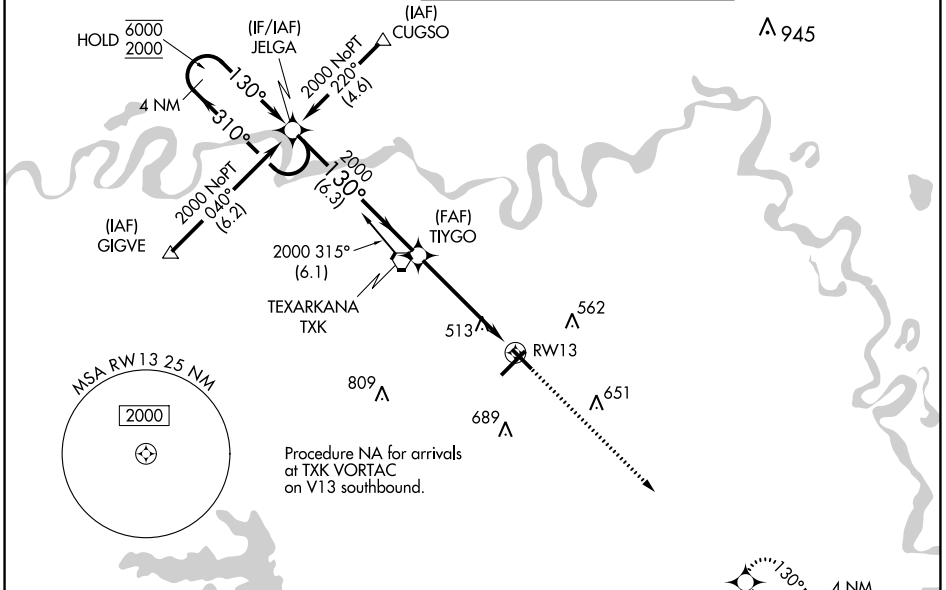


WAAS Ch 87099 W13A	APP CRS 130°	Rwy Idg 4559 TDZE 388 Apt Elev 390
----------------------------------------	------------------------	---------------------------------------------------------------

RNAV (GPS) RWY 13

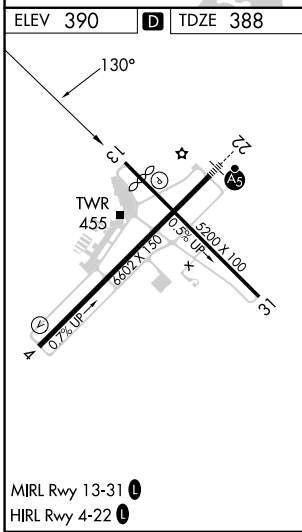
TEXARKANA RGNL-WEBB FLD (TXK)

RNP APCH - GPS.		<p>Baro-VNAV and VDP NA when using De Queen altimeter setting. Rwy 13 helicopter visibility reduction below 3/4 SM NA. For uncompensated Baro-VNAV systems, LNAV/VNAV NA below -15°C or above 54°C. When local altimeter setting not received, use De Queen altimeter setting and increase LPV DA to 748 feet and all Cats visibility 1/4 SM, LNAV/VNAV DA to 868 feet all Cats visibility 3/8 SM, and all MDAs 100 feet and LNAV and Circling Cats C/D visibility 1/4 SM.</p>		MISSED APPROACH: Climb to 2000 direct WATLE and hold.
ATIS 120.2	FORT WORTH CENTER 123.925 269.475	TEXARKANA TOWER* 123.875 (CTAF) 235.625	GND CON 119.225	



SC-1, 28 NOV 2024 to 26 DEC 2024

SC-1, 28 NOV 2024 to 26 DEC 2024



ELEV 390	D	TDZE 388		
<p>4 NM Holding Pattern JELGA</p> <p>VGSI and RNAV glidepath not coincident (VGSI Angle 3.00/TCH 48).</p> <p>GP 3.00° TCH 54</p> <p>6000 ← 310° → 130° → 2000</p> <p>2000</p> <p>1.2 NM to RW13</p> <p>6.3 NM 3.8 NM 1.2 NM</p>				
2000	↑	WATLE		
CATEGORY	A	B	C	D
LPV DA	648-3/4 260 (300-3/4)			
LNAV/VNAV DA	768-1 380 (400-1)			
LNAV MDA	780-1	392 (400-1)	780-1 1/8	392 (400-1 1/8)
CIRCLING	820-1 430 (500-1)	900-1 510 (600-1)	1000-1 3/4 610 (700-1 3/4)	1080-2 1/4 690 (700-2 1/4)