

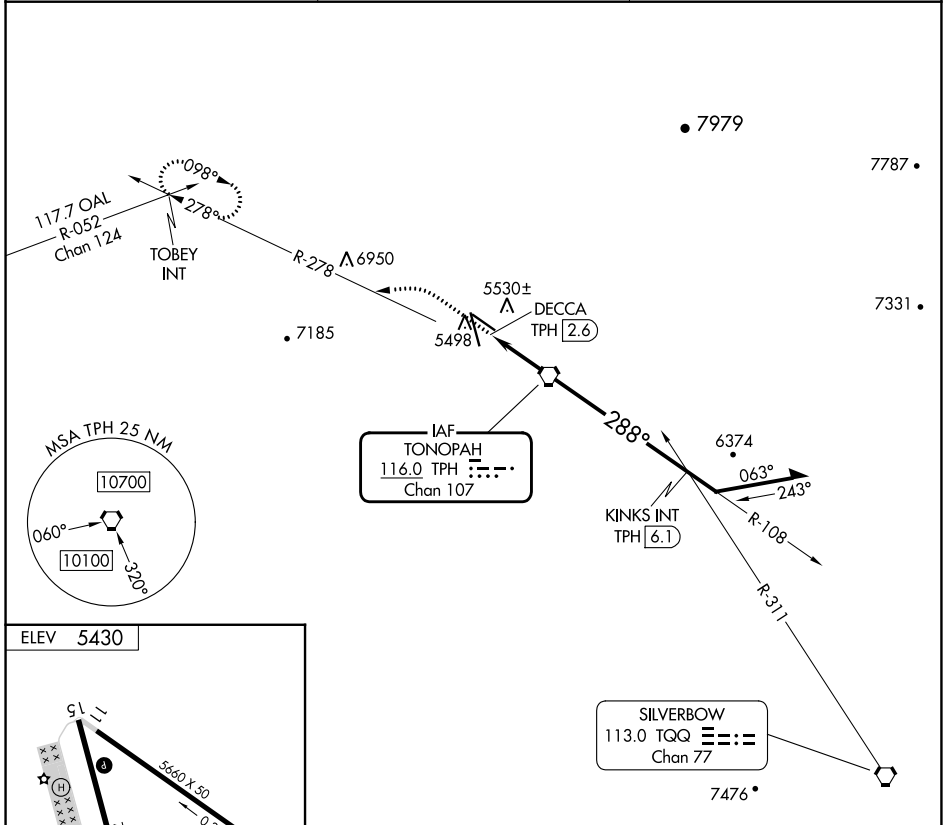
VORTAC TPH <b>116.0</b> Chan <b>107</b>	APP CRS <b>288°</b>	Rwy ldg TDZE <b>N/A</b> Apt Elev <b>5430</b>
-----------------------------------------------	------------------------	-------------------------------------------------------

**VOR-A**  
TONOPAH (TPH)

**⚠** Circling Rwy 11 NA at night. When local altimeter setting not received, procedure NA. Circling NA for Cat D southwest of Rwy 15-33.

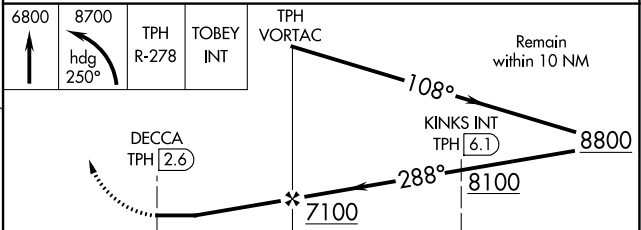
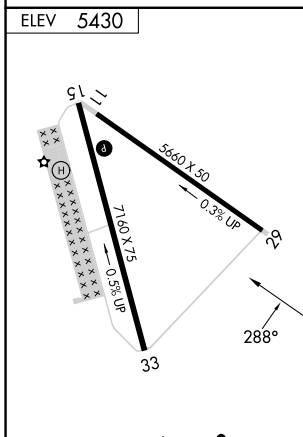
MISSED APPROACH: Climb to 6800 then climbing left turn to 8700 on heading 250° and on TPH VORTAC R-278 to TOBEY INT and hold.

ASOS <b>118.875</b>	NELLIS APP CON <b>119.35 254.4</b>	UNICOM <b>123.0 (CTAF) 0</b>
------------------------	---------------------------------------	---------------------------------



SW-4, 28 NOV 2024 to 26 DEC 2024

SW-4, 28 NOV 2024 to 26 DEC 2024



MIRL Rws 11-29 and 15-33 0

FAF to MAP 2.6 NM

Knots	60	90	120	150	180
Min:Sec	2:36	1:44	1:18	1:02	0:52

CATEGORY	A	B	C	D
CIRCLING	6640-1¼ 1210 (1300-1¼)	6640-1½ 1210 (1300-1½)	6640-3 1210 (1300-3)	1210 (1300-3)