

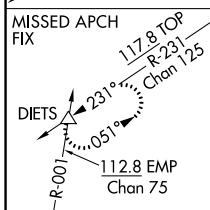
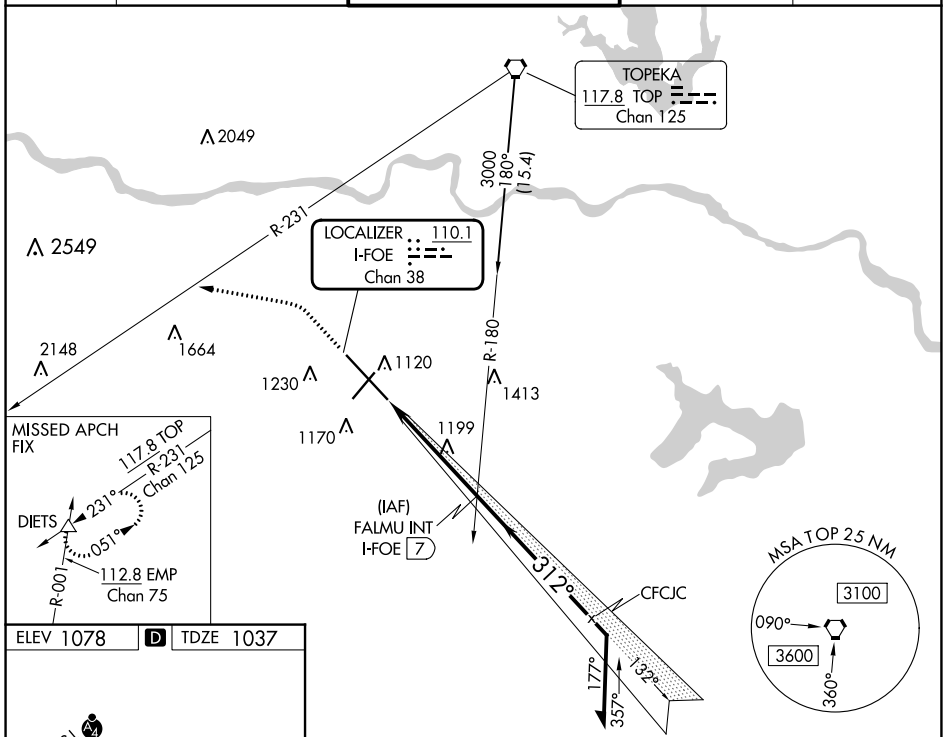
LOC/DME I-FOE 110.1 Chan 38	APP CRS 312°	Rwy Idg 12803 TDZE 1037 Apt Elev 1078
---	------------------------	--

ILS or LOC RWY 31

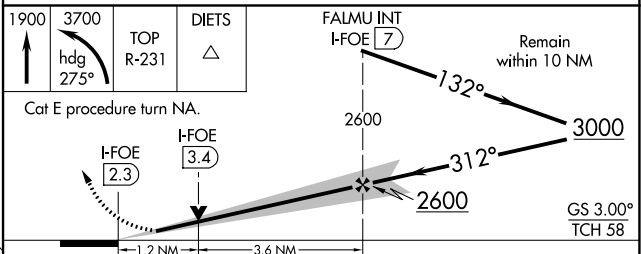
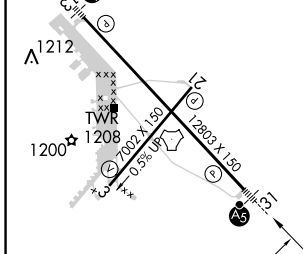
TOPEKA RGNL (FOE)

<p>⚠ RADAR required for Cat E for procedure entry.</p> <p>⚠ For inop ALS, increase S-ILS Cat E visibility to RVR 4000 and S-LOC Cat E visibility to 1¼ SM. *RVR 1800 authorized with use of FD or AP or HUD to DA.</p>		<p>MALSR</p>	<p>MISSED APPROACH: Climb to 1900 then climbing left turn to 3700 on heading 275° and on TOP VORTAC R-231 to DIETS INT and hold.</p>
--	--	--------------	--

ATIS 128.25	KANSAS CITY CENTER 123.8 343.7	FORBES TOWER* 120.8 (CTAF) 0 340.2	GND CON 118.425 275.8	UNICOM 122.95
-----------------------	--	--	---------------------------------	-------------------------



ELEV 1078	D TDZE 1037
-----------	-------------



REIL Rws 3, 13 and 21	3	13	21		
MIRL Rwy 3-21	1				
HIRL Rwy 13-31	1				
FAF to MAP 4.7 NM					
Knots	60	90	120	150	180
Min:Sec	4:42	3:08	2:21	1:53	1:34
CIRCLING	1520-1 442 (500-1)	1580-1 502 (600-1)	1580-1½ 502 (600-1½)	1700-2 622 (700-2)	1720-2¼ 642 (700-2¼)
CATEGORY	A	B	C	D	E
S-ILS 31*	1237/24 200 (200-½)				
S-LOC 31	1460/24	423 (400-½)	1460/40	423 (400-¾)	

NC-2, 28 NOV 2024 to 26 DEC 2024

NC-2, 28 NOV 2024 to 26 DEC 2024