

APP CRS 215°	Rwy Idg 5500
	TDZE 5757
	Apt Elev 5762

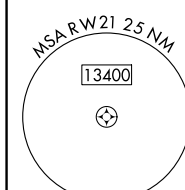
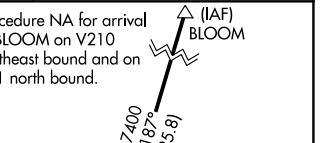
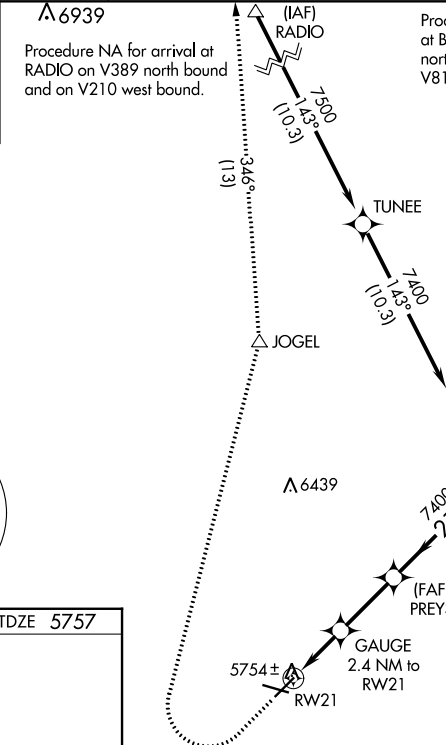
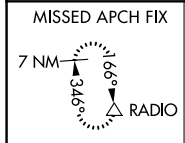
RNAV (GPS) RWY 21

PERRY STOKES (TAD)

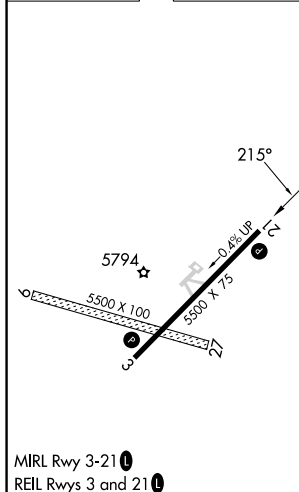
⚠ Circling NA to Rwy 9 and 27. DME/DME RNP-0.3 NA. When local altimeter setting not received, use Pueblo altimeter setting and increase all MDA 300 feet: increase LNAV Cat C/D visibility 5/8 SM, Circling Cat B/D visibility 1/4 SM and Circling Cat C visibility 1 SM. VDP NA when using Pueblo altimeter setting.

⚠ MISSED APPROACH: Climb to 6200 then climbing right turn to 10000 direct JOGEL and on track 346° to RADIO and hold.

ASOS 119.025	DENVER CENTER 128.375 379.95	UNICOM 122.8 (CTAF)
------------------------	--	-------------------------------



ELEV 5762	TDZE 5757
-----------	-----------



6200	10000	JOGEL	RADIO	PREYS	GOERS	
↑	↷	△	tr 346° △			
			GAUGE 2.4 NM to RW21	7400	7400	
			0.8 NM to RW21	215°		
			6540			
			0.8 NM	1.6 NM	2.7 NM	5 NM
CATEGORY	A		B		C	D
LNAV MDA	6020-1		263 (300-1)			
C CIRCLING	6180-1 418 (500-1)	6300-1 538 (600-1)	6340-1½ 578 (600-1½)	6580-2¾ 818 (900-2¾)		

SW-1, 28 NOV 2024 to 26 DEC 2024

SW-1, 28 NOV 2024 to 26 DEC 2024