

24333

[USAF]

DAVIS MONTANAN THREE DEPARTURE (DMA3.DMA)

DAVIS-MONTANAN AFB (KDMA)
TUCSON, ARIZONA

Rwy	Knots	60	120	180	240	300	360
13	Ⓞ V/V(fpm)	240	480	720	960	1200	1440
31	Ⓞ V/V(fpm)	300	600	900	1200	1500	1800

Minimum Climb Rate

Ⓞ to 3200

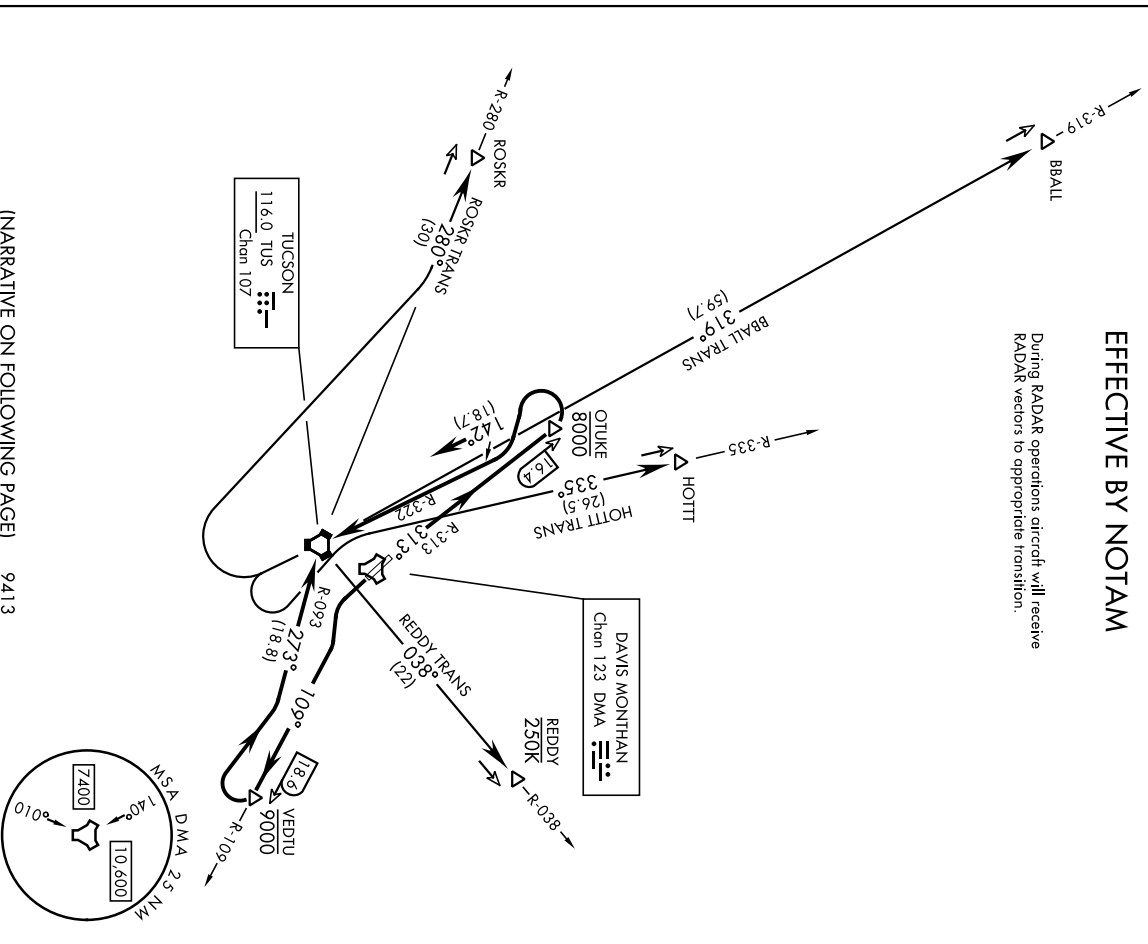
Ⓞ HOTTI TRANS to 9200

ATIS * 132.3 270.1
 GINC DEL 121.8 275.8
 GND CON 121.8 275.8
 TOWER 118.85 253.5
 TUCSON APP/DEP CON 119.4 269.55

[DMF required]

EFFECTIVE BY NOTAM

During RADAR operations aircraft will receive RADAR vectors to appropriate transition.



(NARRATIVE ON FOLLOWING PAGE) 9413

DAVIS MONTANAN THREE DEPARTURE (DMA3.DMA)

Orig 28NOV24

TUCSON, ARIZONA
DAVIS-MONTANAN AFB (KDMA)

24333

[USAF]

DAVIS-MONTHAN AFB (KDMA)

DAVIS MONTHAN THREE DEPARTURE (DMA3.DMA)

TUCSON, ARIZONA



DEPARTURE ROUTE DESCRIPTION

TAKEOFF RWY 13: Climbing left turn to intercept DMA TACAN R-109 outbound to VEDTU (DMA R-109/18.6 DME) cross VEDTU at or below 9000, turn right and continue climb on TUS VORTAC R-093 inbound crossing TUS at or above 9000, thence...

BBALL TRANSITION (DMA3.BBALL): ...from over TUS via TUS R-319 cross BBALL (TUS R-319/59.7 DME) at or above FL210.

HOTT TRANSITION (DMA3.HOTT): ...from over TUS via TUS R-335 cross HOTT (TUS R-335/26.5 DME) at or above 14,200.

ROSKR TRANSITION (DMA3.ROSKR): ...from over TUS via TUS R-280 cross ROSKR (TUS R-280/30 DME) at or above 15,300.

TAKEOFF RWY 31: Climb via DMA TACAN R-313 and cross OTUKE (DMA R-313/16.4 DME) at or below 8000, turn left and continue climb on TUS VORTAC R-322 crossing TUS at or below 10,000, thence

HOTT TRANSITION (DMA3.HOTT): ...from over TUS via TUS R-335 cross HOTT (TUS R-335/26.5 DME) at or above 11,100.

REDDY TRANSITION (DMA3.REDDY): ...from over TUS via TUS R-038 cross REDDY (TUS R-038/22 DME) at or above 12,200. Do not exceed 250 KIAS until REDDY.

ROSKR TRANSITION (DMA3.ROSKR): ...from over TUS via TUS R-280 cross ROSKR (TUS R-280/30 DME) at or above 13,600.

DAVIS MONTHAN THREE DEPARTURE (DMA3.DMA)

Orig 28NOV24

TUCSON, ARIZONA
DAVIS-MONTHAN AFB (KDMA)