

HI-ILS or LOC Z RWY 13

LOC I-AFB 109.3	APCH CRS 128°	Rwy Idg 13,645 TDZE 2615 Arpt Elev 2704
---------------------------	-------------------------	--

[USAF]

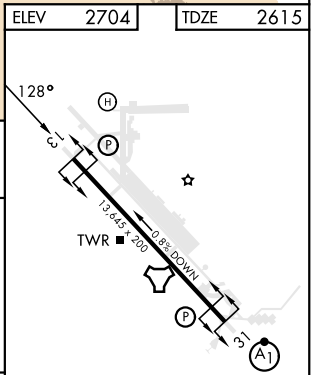
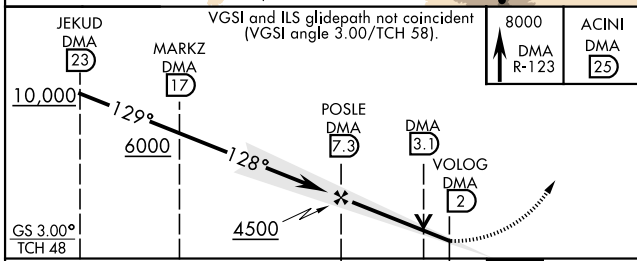
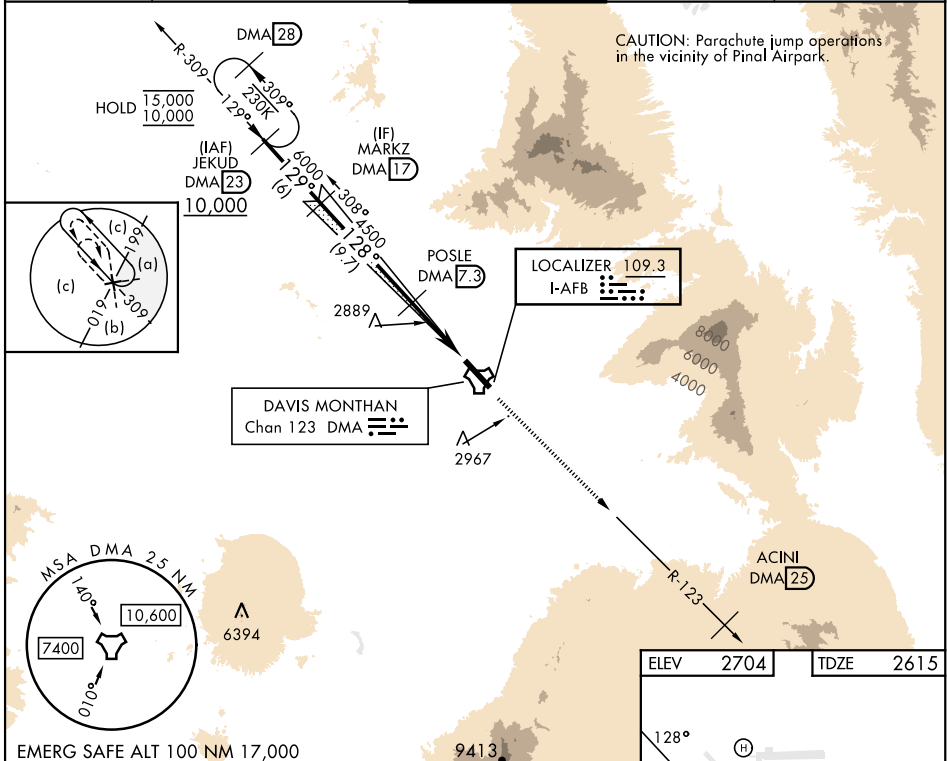
DAVIS-MONTHAN AFB (KDMA)

DME or RADAR required

*** Circling not authorized SW of Rwy 13-31.**

MISSED APPROACH: Climbing to 8000 intercept DMA TACAN R-123 to ACINI. Expect RADAR vectors.

ATIS★ 132.3 270.1	TUCSON APP CON 066°-274° 119.4 318.1 275°-065° 125.1 269.55	TOWER 118.85 253.5	GND CON 121.8 275.8	CLNC DEL 121.8 275.8
-----------------------------	---	------------------------------	-------------------------------	--------------------------------



CATEGORY	C	D	E
S-ILS 13		281.5/40 200 (200-¾)	
S-LOC 13		316.0-1½ 545 (500-1½)	
CIRCLING*	3280-1⅞ 576 (600-1⅞)	3420-2¼ 716 (800-2¼)	3460-2¾ 756 (800-2¾)

REIL Rwy 13	
HIRL Rwy 13-31	
FAF to MAP 5.3 NM	
Knots	120 140 160 180 200
Min:Sec	2:39 2:16 1:59 1:46 1:35

HI-ILS or LOC Z RWY 13

SW-4, 28 NOV 2024 to 26 DEC 2024

SW-4, 28 NOV 2024 to 26 DEC 2024