

TUCSON, ARIZONA

HI-ILS or LOC Z RWY 31

LOC I-DMA 109.3	APCH CRS 308°	Rwy Idg 13,645 TDZE 2704 Arprt Elev 2704
---------------------------	-------------------------	---------------------------------------------------------------------

[USAF]

DAVIS-MONTHAN AFB (KDMA)

DME or RADAR required

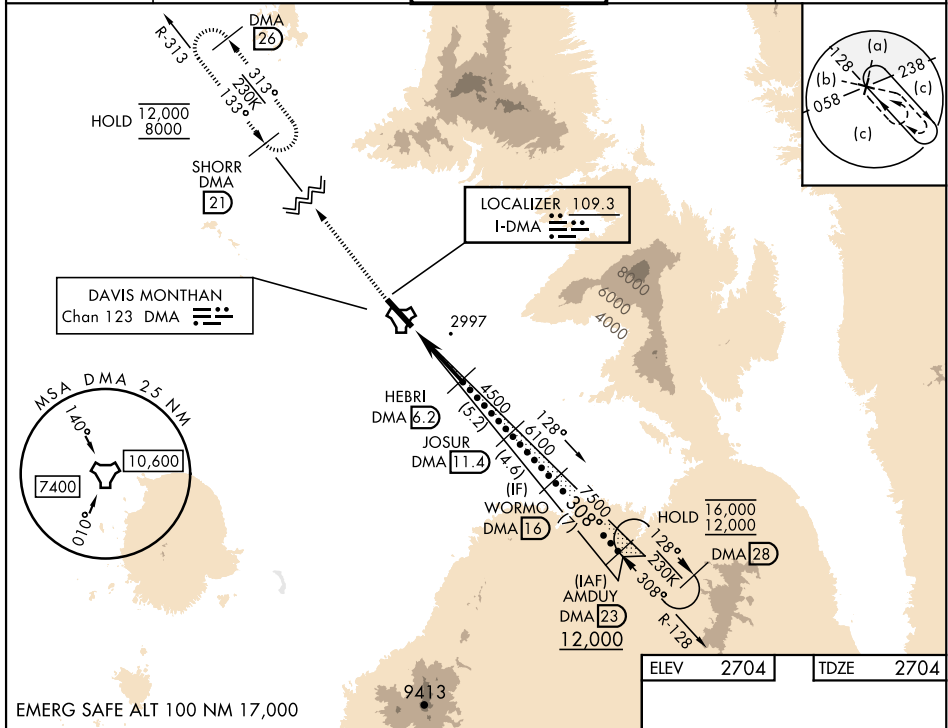
ALSF-1

MISSED APPROACH: Climb to 8000, intercept DMA TACAN R-313 to SHORR and hold, continue climb-in-hold to 8000.

- * When ALS inop, increase RVR to 40, vis to 3/4 mile.
- ** When ALS inop, increase vis to 2 miles.
- *** Circling not authorized SW of Rwy 13-31.



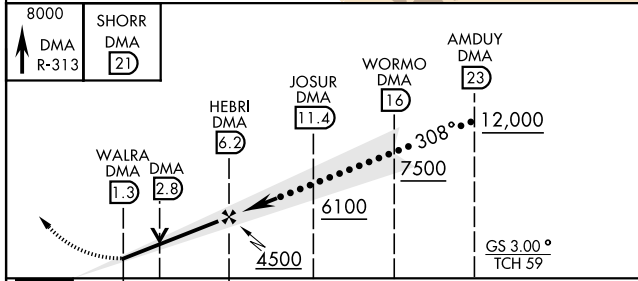
ATIS★ 132.3 270.1	TUCSON APP CON 066°-274° 119.4 318.1 275°-065° 125.1 269.55	TOWER 118.85 253.5	GND CON 121.8 275.8	CLNC DEL 121.8 275.8
-----------------------------	---------------------------------------------------------------------------------	------------------------------	-------------------------------	--------------------------------



SW-4, 28 NOV 2024 to 26 DEC 2024

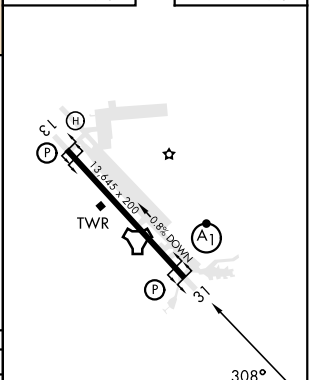
SW-4, 28 NOV 2024 to 26 DEC 2024

EMERG SAFE ALT 100 NM 17,000



ELEV	2704	TDZE	2704
------	------	------	------

CATEGORY	C	D	E
S-ILS 31*	2904/24	200	(200-1/2)
S-LOC 31**	3400-1 1/2	696	(700-1 1/2)
CIRCLING***	3400-2 696 (700-2)	3420-2 1/4 716 (800-2 1/4)	3460-2 3/4 756 (800-2 3/4)



REIL Rwy 13				
HIREL Rwy 13-31				
FAF to MAP 4.9 NM				
Knots	120	140	160	180
Min:Sec	2:27	2:06	1:50	1:38

TUCSON, ARIZONA

32°10'N-110°53'W

DAVIS-MONTHAN AFB (KDMA)

Orig 31OCT24

HI-ILS or LOC Z RWY 31