

HI-TACAN Z RWY 31

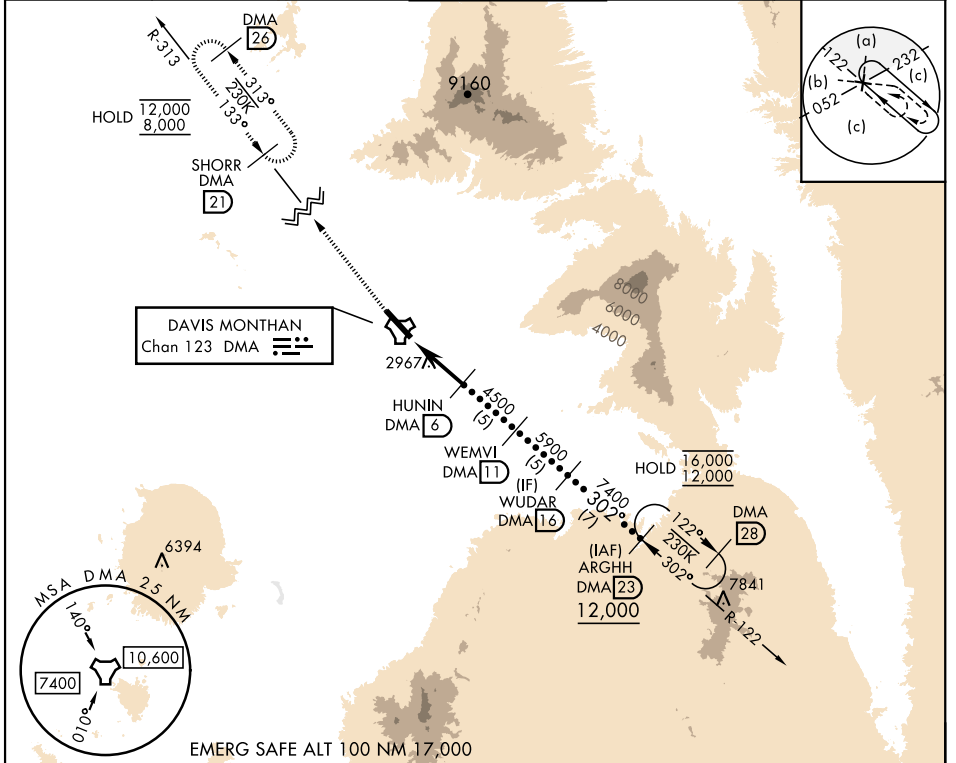
TACAN DMA Chan 123	APCH CRS 302°	Rwy ldg 13,645 TDZE 2704 Arprt Elev 2704
------------------------------	-------------------------	---

[USAF]

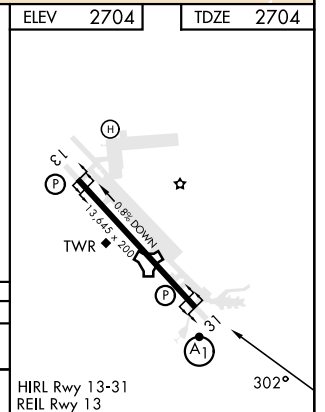
DAVIS-MONTHAN AFB (KDMA)

▽ * When ALS inop, increase vis to 2 miles. ** Circling not authorized SW of Rwy 13-31.	ALSF-1 (A1)	MISSED APPROACH: Climb to 8000, intercept DMA TACAN R-313 to SHORR and hold, continue climb-in-hold to 8000.
---	-----------------------	--

ATIS★ 132.3 270.1	TUCSON APP CON 066°-274° 119.4 318.1 275°-065° 125.1 269.55	TOWER 118.85 253.5	GND CON 121.8 275.8	CLNC DEL 121.8 275.8
-----------------------------	---	------------------------------	-------------------------------	--------------------------------



8000 DMA R-313	SHORR DMA 21	WUDAR DMA 16		ARGHH DMA 23
DMA TACAN	ZUSTI DMA 13	HUNIN DMA 6	WEMVI DMA 11	12,000
0.5 NM	4.7 NM	4500	5900	7400
3.13° TCH 59		302°		
CATEGORY	C	D	E	
S-31*	3420-15%	716	(800-15%)	
CIRCLING**	3420-2 716 (800-2)	3420-2¼ 716 (800-2¼)	3460-2¾ 756 (800-2¾)	



HI-TACAN Z RWY 31

SW-4, 28 NOV 2024 to 26 DEC 2024

SW-4, 28 NOV 2024 to 26 DEC 2024