

TUCSON, ARIZONA

# ILS or LOC Y RWY 13

LOC I- <b>AFB</b> <b>109.3</b>	APCH CRS <b>128°</b>	Rwy Idg <b>13,645</b> TDZE <b>2615</b> Arprt Elev <b>2704</b>
-----------------------------------	-------------------------	---

[USAF]

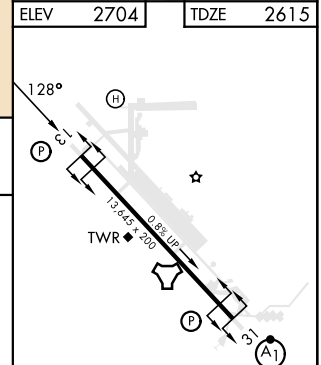
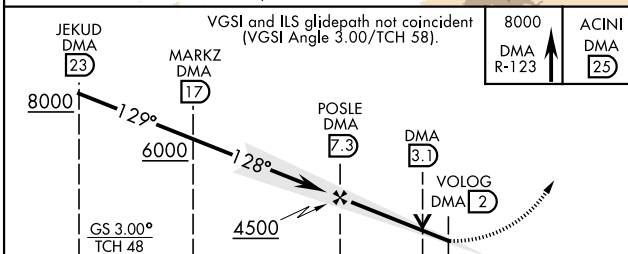
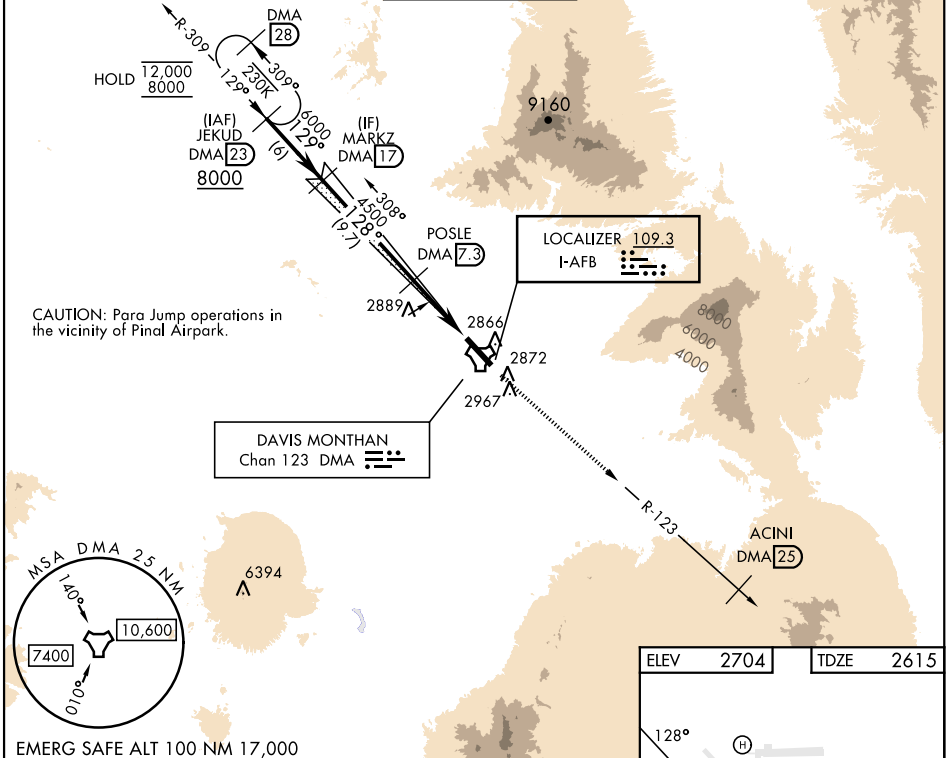
DAVIS-MONTHAN AFB (KDMA)

DME or RADAR required

**▼** \* Circling not authorized SW of Rwy 13-31.

MISSED APPROACH: Climbing to 8000 intercept DMA TACAN R-123 to ACINI. Expect RADAR vectors.

ATIS★ <b>132.3 270.1</b>	TUCSON APP CON 066°-274° <b>119.4 318.1</b> 275°-065° <b>125.1 269.55</b>	TOWER <b>118.85 253.5</b>	GND CON <b>121.8 275.8</b>	CLNC DEL <b>121.8 275.8</b>
-----------------------------	---	------------------------------	-------------------------------	--------------------------------



CATEGORY	A	B	C	D	E	HIRL Rwy 13-31 REIL Rwy 13 FAF to MAP 5.3 NM	
S-ILS 13	2815/40 200 (200-¾)						Knots
S-LOC 13	3160/55	545 (500-1)	3160-1½	545 (500-1½)	3420-2¼		60 90 120 150 180
CIRCLING*	3200-1 496 (500-1)	3220-1 516 (600-1)	3280-1½ 576 (600-1½)	3420-2¼ 716 (800-2¼)	3460-2¾ 756 (800-2¾)	Min:Sec	
						5:18 3:32 2:39 2:07 1:46	

TUCSON, ARIZONA  
Orig 31OCT24

32°10'N-110°53'W

DAVIS-MONTHAN AFB (KDMA)

# ILS or LOC Y RWY 13

SW-4, 28 NOV 2024 to 26 DEC 2024

SW-4, 28 NOV 2024 to 26 DEC 2024