

TUCSON, ARIZONA

# ILS or LOC Y RWY 31

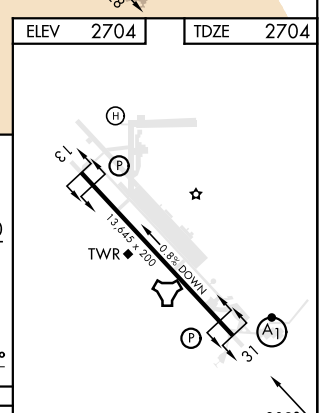
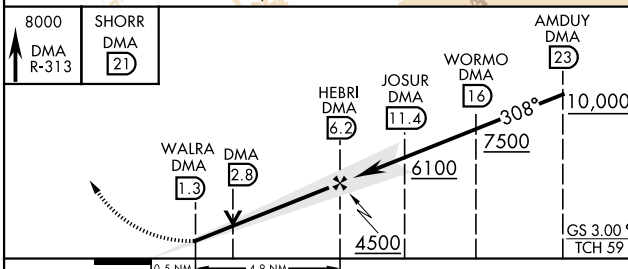
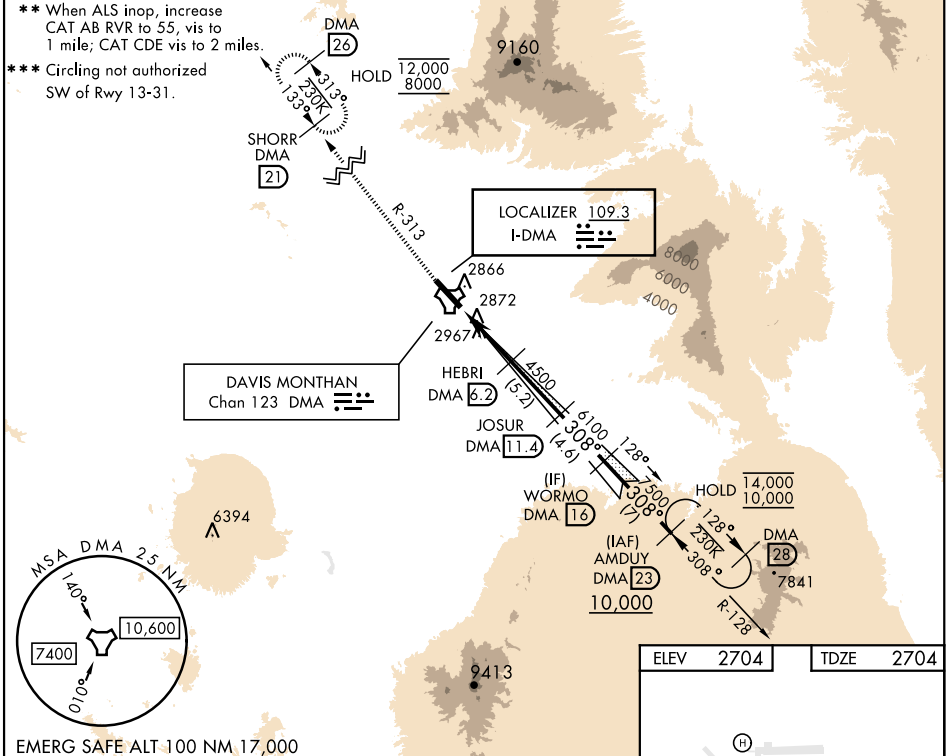
LOC I-DMA <b>109.3</b>	APCH CRS <b>308°</b>	Rwy Idg <b>13,645</b>
		TDZE <b>2704</b>
		Arprt Elev <b>2704</b>

[USAF]

DAVIS-MONTHAN AFB (KDMA)

DME or RADAR required	ALSF-1 <b>(A1)</b>	MISSED APPROACH: Climb to 8000, intercept DMA TACAN R-313 to SHORR and hold, continue climb-in-hold to 8000.
* When ALS inop, increase RVR to 40, vis to 3/4 mile.		

ATIS★ <b>132.3 270.1</b>	TUCSON APP CON 066°-274° <b>119.4 318.1</b> 275°-065° <b>125.1 269.55</b>	TOWER <b>118.85 253.5</b>	GND CON <b>121.8 275.8</b>	CLNC DEL <b>121.8 275.8</b>
-----------------------------	---	------------------------------	-------------------------------	--------------------------------



CATEGORY	A	B	C	D	E	HIRL Rwy 13-31 REIL Rwy 13												
S-ILS 31*	2904/24 200 (200-1/2)						FAF to MAP 4.9 NM											
S-LOC 31**	3400/24 696 (700-1/2)	3400-1 1/2 696 (700-1 1/2)																
CIRCLING***	3400-1 696 (700-1)	3400-2 696 (700-2)	3420-2 1/4 716 (800-2 1/4)	3460-2 3/4 756 (800-2 3/4)		<table border="1"> <tr> <td>Knots</td> <td>60</td> <td>90</td> <td>120</td> <td>150</td> <td>180</td> </tr> <tr> <td>Min:Sec</td> <td>4:54</td> <td>3:16</td> <td>2:27</td> <td>1:58</td> <td>1:38</td> </tr> </table>	Knots	60	90	120	150	180	Min:Sec	4:54	3:16	2:27	1:58	1:38
Knots	60	90	120	150	180													
Min:Sec	4:54	3:16	2:27	1:58	1:38													

TUCSON, ARIZONA

32°10'N-110°53'W

DAVIS-MONTHAN AFB (KDMA)

Orig 31OCT24

# ILS or LOC Y RWY 31

SW-4, 28 NOV 2024 to 26 DEC 2024

SW-4, 28 NOV 2024 to 26 DEC 2024