

TUCSON, ARIZONA

TACAN Y RWY 31

DAVIS-MONTHAN AFB (KDMA)

TACAN DMA Chan 123	APCH CRS 302°	Rwy Idg 13,645 TDZE 2704 Arprt Elev 2704
------------------------------	-------------------------	---

[USAF]

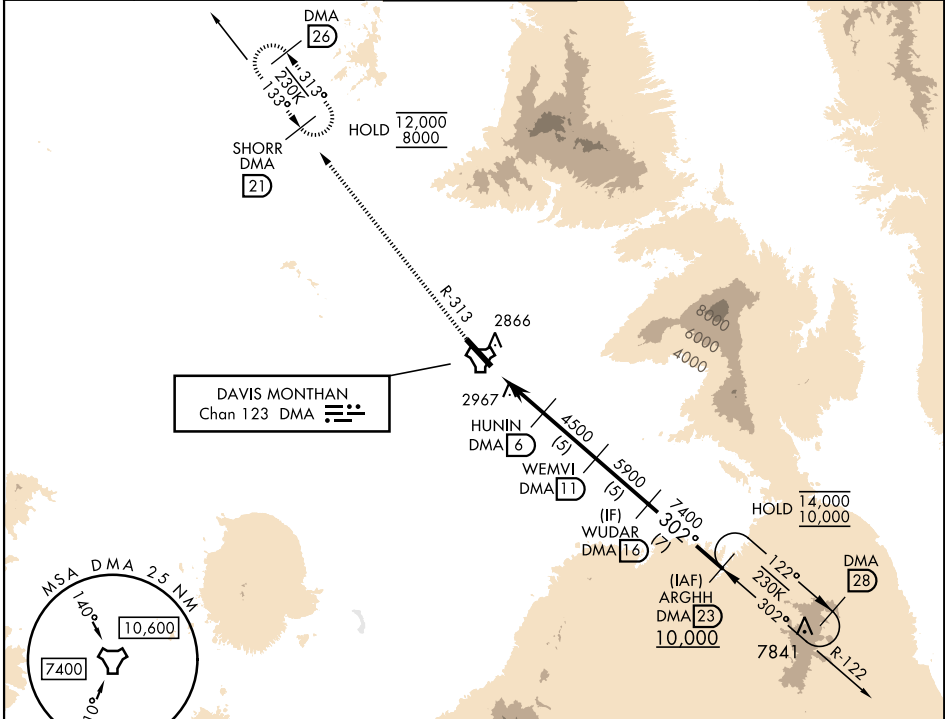
▼ * When ALS inop, increase CAT AB RVR to 55 vis to 1 mile; CAT CDE vis to 2 miles.
** Circling not authorized SW of Rwy 13-31.

ALSF-1



MISSED APPROACH: Climb to 8000, intercept DMA TACAN R-313 to SHORR and hold, continue climb-in-hold to 8000.

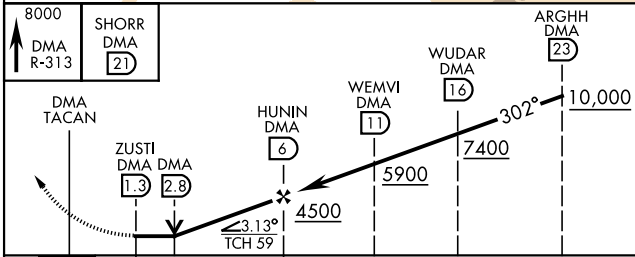
ATIS★ 132.3 270.1	TUCSON APP CON 066°-274° 119.4 318.1 275°-065° 125.1 269.55	TOWER 118.85 253.5	GND CON 121.8 275.8	CLNC DEL 121.8 275.8
-----------------------------	---	------------------------------	-------------------------------	--------------------------------



SW-4, 28 NOV 2024 to 26 DEC 2024

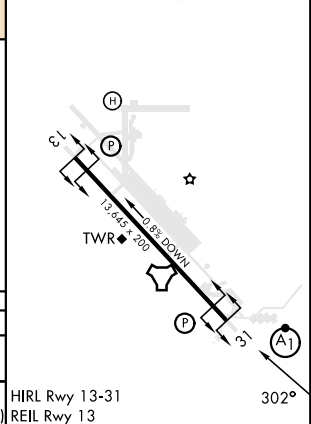
SW-4, 28 NOV 2024 to 26 DEC 2024

EMERG SAFE ALT 100 NM 17,000



ELEV	2704	TDZE	2704
------	------	------	------

CATEGORY	A	B	C	D	E
S-31 *	3420/24 716 (800-1/2)		3420-1 716 (800-1 1/8)		
CIRCLING **	3420-1 716 (800-1)		3420-2 716 (800-2)	3420-2 1/4 716 (800-2 1/4)	3460-2 3/4 716 (800-2 3/4)



TUCSON, ARIZONA
Orig 31OCT24

32°10'N-110°53'W

DAVIS-MONTHAN AFB (KDMA)

TACAN Y RWY 31