

APP CRS	Rwy Idg	6000
216°	TDZE	2572
	Apt Elev	2643

RNAV (GPS) RWY 22

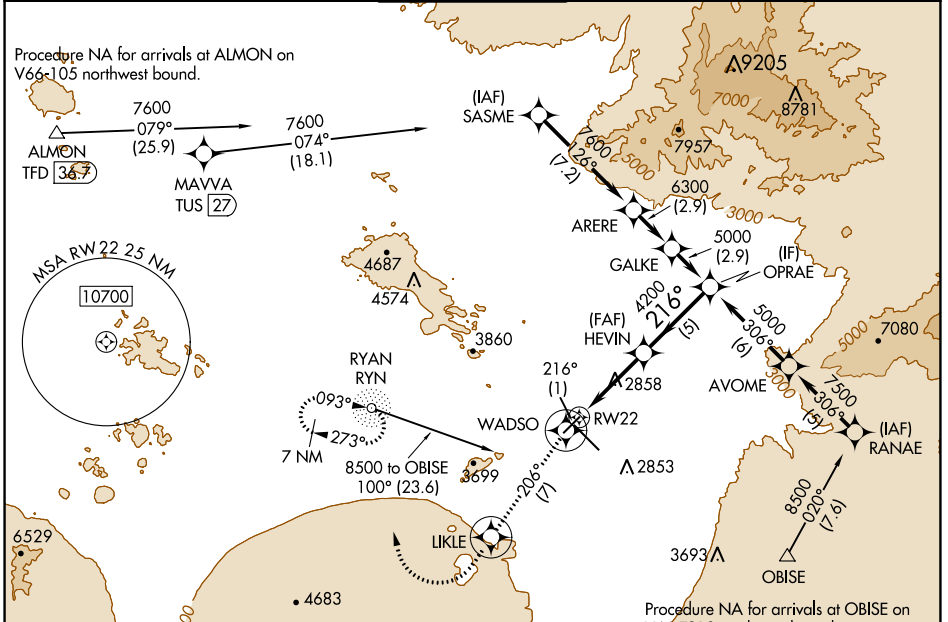
TUCSON INTL (TUS)

RNP APCH - GPS.

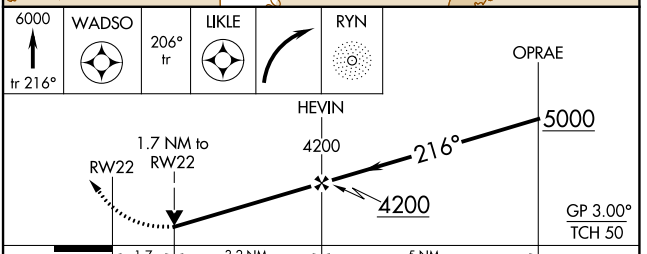
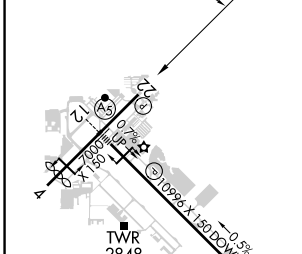
▼ Rwy 22 helicopter visibility reduction below 3/4 SM NA.
▲ For uncompensated Baro-VNAV systems, LNAV/VNAV NA below -2°C or above 54°C.

MISSED APPROACH: Climb to 6000 on track 216° to WADSO and 206° track to LIKLE and right turn direct RYN NDB and hold, continue climb-in-hold to 6000.

ATIS 123.8 279.65	TUCSON APP CON 119.4 318.1	TUCSON TOWER 118.3 257.8	GND CON 120.025 348.6	CLNC DEL 126.65 326.2
-----------------------------	--------------------------------------	---	---------------------------------	---------------------------------



ELEV 2643	D	TDZE 2572
-----------	----------	-----------



CATEGORY	A	B	C	D
LNAV/VNAV DA	3145-2 573 (600-2)			
LNAV MDA	3160-1 588 (600-1)	3160-1 3/4 588 (600-1 3/4)		
CIRCLING	3160-1 517 (600-1)	3220-1 577 (600-1)	3220-1 3/4 577 (600-1 3/4)	3660-3 1017 (1100-3)

HIRL Rwy 12-30
 MIRL Rwy 4-22
 REIL Rwy 22 and 30

SW-4, 28 NOV 2024 to 26 DEC 2024

SW-4, 28 NOV 2024 to 26 DEC 2024