

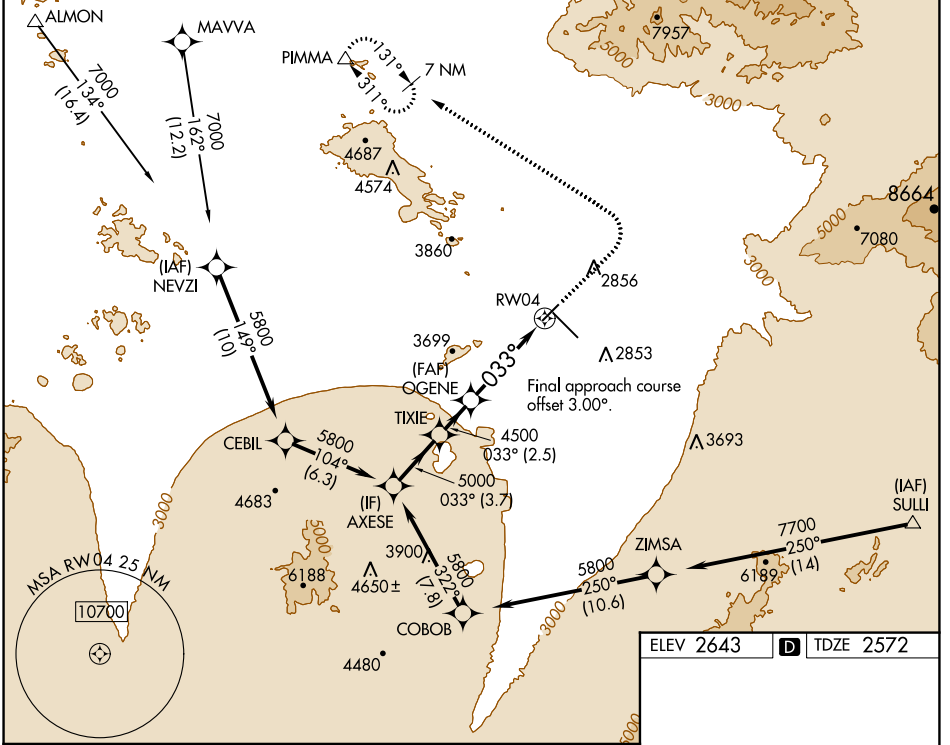
APP CRS	Rwy Idg	<b>6150</b>
<b>033°</b>	TDZE	<b>2572</b>
	Apt Elev	<b>2643</b>

# RNAV (GPS) RWY 4

TUCSON INTL (TUS)

RNP APCH - GPS.		MISSED APPROACH: Climb to 3500 then climbing left turn to 6500 direct PIMMA and hold.
	Rwy 4 helicopter visibility reduction below 3/4 SM NA. For uncompensated Baro-VNAV systems, LNAV/VNAV NA below -2°C or above 54°C.	

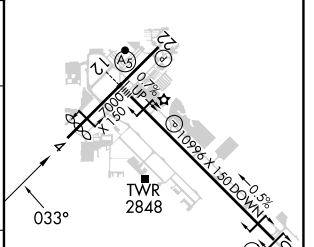
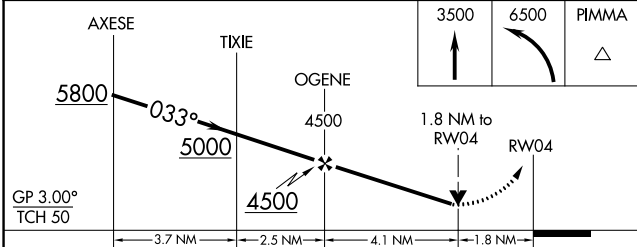
ATIS <b>123.8 279.65</b>	TUCSON APP CON <b>119.4 318.1</b>	TUCSON TOWER <b>118.3 257.8</b>	GND CON <b>120.025 348.6</b>	CLNC DEL <b>126.65 326.2</b>
-----------------------------	--------------------------------------	------------------------------------	---------------------------------	---------------------------------



SW-4, 28 NOV 2024 to 26 DEC 2024

SW-4, 28 NOV 2024 to 26 DEC 2024

ELEV 2643	<b>D</b> TDZE 2572
-----------	--------------------



CATEGORY	A	B	C	D
LNAV/VNAV DA	3284-2 1/2		712 (700-2 1/2)	
LNAV MDA	3180-1	608 (600-1)	3180-1 3/4	608 (600-1 3/4)
CIRCLING	3180-1 537 (600-1)	3220-1 577 (600-1)	3220-1 3/4 577 (600-1 3/4)	3660-3 1017 (1100-3)

HIRL Rwy 12-30  
MIRL Rwy 4-22  
REIL Rwy 22 and 30