

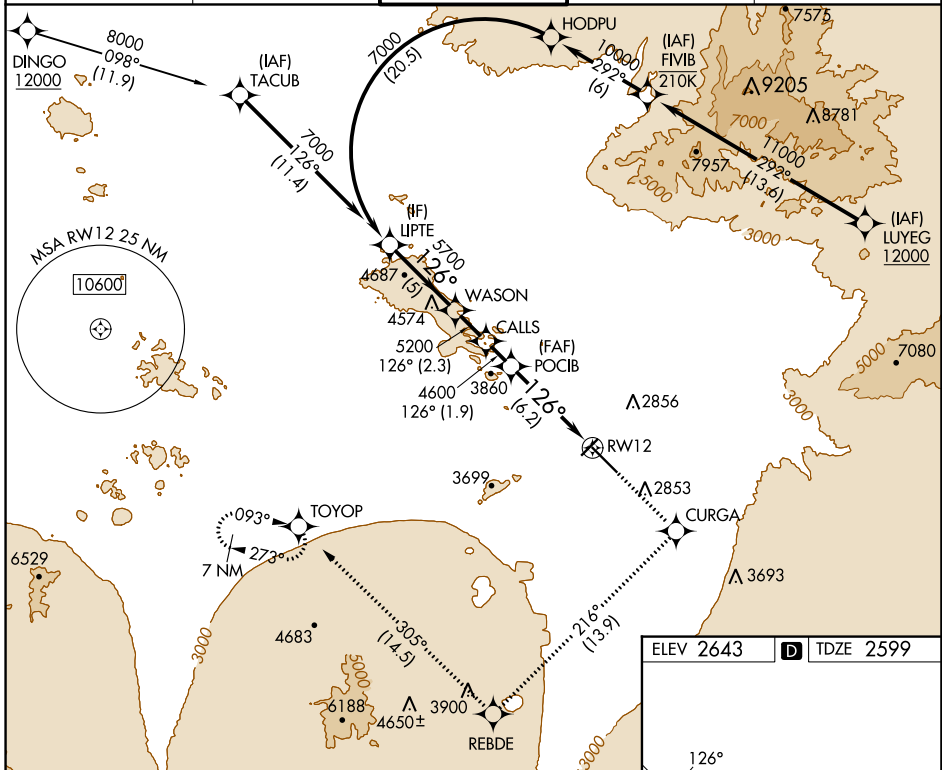
APP CRS	Rwy ldg	10996
126°	TDZE	2599
	Apt Elev	2643

RNAV (RNP) Y RWY 12

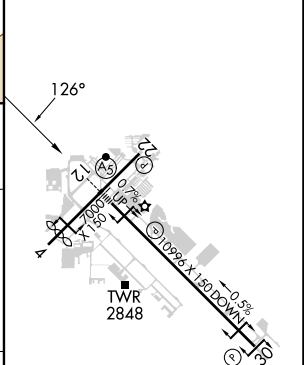
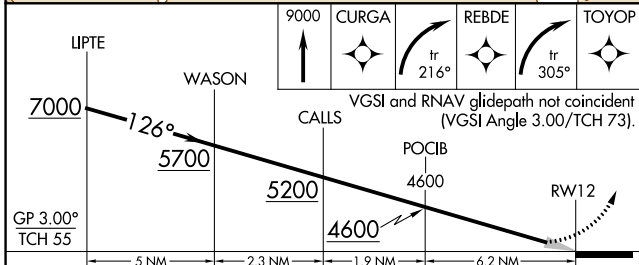
TUCSON INTL (TUS)

RNP AR APCH - GPS.	MALSR	MISSED APPROACH: Climb to 9000 direct CURGA and climbing right turn on track 216° to REBDE and climbing right turn on track 305° to TOYOP and hold, continue climb-in-hold to 9000.
▼ For uncompensated Baro-VNAV systems, procedure NA below -2°C or above 54°C. For inop ALS, increase RNP 0.30 all Cats visibility to RVR 4500.		

ATIS 123.8 279.65	TUCSON APP CON 119.4 318.1	TUCSON TOWER 118.3 257.8	GND CON 120.025 348.6	CLNC DEL 126.65 326.2
-----------------------------	--------------------------------------	------------------------------------	---------------------------------	---------------------------------



ELEV 2643	D TDZE 2599
-----------	--------------------



CATEGORY	A	B	C	D
RNP 0.30 DA	2905/24 306 (300-½)			

AUTHORIZATION REQUIRED

HIRL Rwy 12-30
MIRL Rwy 4-22
REIL Rwy 22 and 30

SW-4, 28 NOV 2024 to 26 DEC 2024

SW-4, 28 NOV 2024 to 26 DEC 2024