

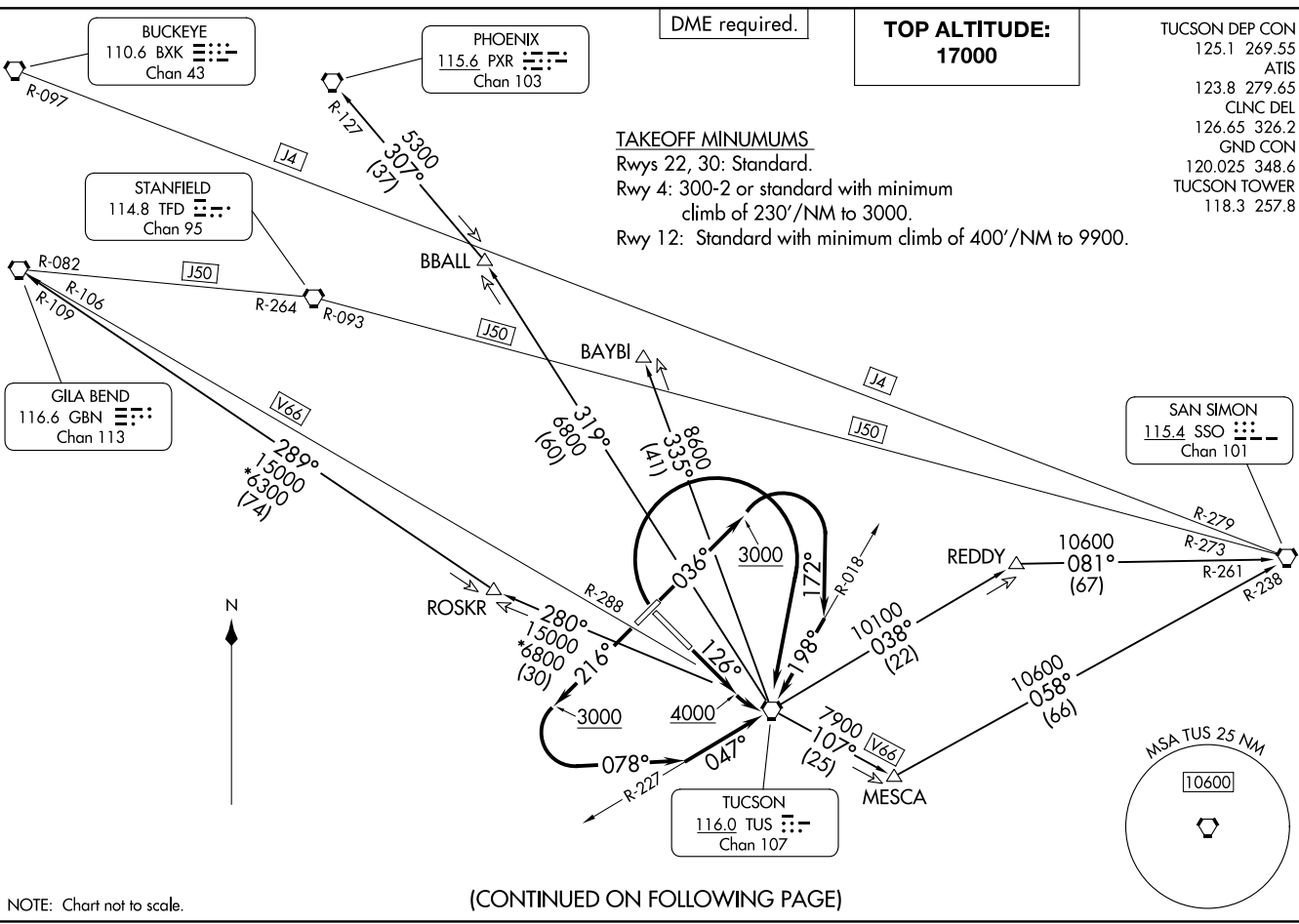
TUCSON NINE DEPARTURE
(TUS9.TUS) 30NOV23

TUCSON, ARIZONA
TUCSON INTL (TUS)

TUCSON NINE DEPARTURE
(TUS9.TUS) 24081

AL-430 (FAA)

TUCSON INTL (TUS)
TUCSON, ARIZONA



NOTE: Chart not to scale.

(CONTINUED ON FOLLOWING PAGE)



DEPARTURE ROUTE DESCRIPTION

TAKEOFF RUNWAY 4: Climb on heading 036° to 3000 then climbing right turn on heading 172° and TUS R-018 to TUS VORTAC, thence

TAKEOFF RUNWAY 12: Climb on heading 126° to 4000 then climbing left turn direct TUS VORTAC, thence

TAKEOFF RUNWAY 22 : Climb on heading 216° to 3000 then climbing left turn on heading 078° and TUS VORTAC R-227 to TUS VORTAC, thence

TAKEOFF RUNWAY 30: Climbing right turn direct TUS VORTAC. Thence

. . . . maintain 17000, expect clearance to filed altitude 10 minutes after departure.

BAYBI TRANSITION (TUS9.BAYBI): From over TUS VORTAC on TUS R-335 to BAYBI.

BBALL TRANSITION (TUS9.BBALL): From over TUS VORTAC on TUS R-319 to BBALL.

GILA BEND TRANSITION (TUS9.GBN): From over TUS VORTAC on TUS R-280 and GBN R-109 to GBN VORTAC.

MESCA TRANSITION (TUS9.MESCA): From over TUS VORTAC on TUS R-107 and SSO R-238 to SSO VORTAC.

PHOENIX TRANSITION (TUS9.PXR): From over TUS VORTAC on TUS R-319 and PXR R-127 to PXR VORTAC.

REDDY TRANSITION (TUS9.REDDY): From over TUS VORTAC on TUS R-038 and SSO R-261 to SSO VORTAC.

SW-4, 28 NOV 2024 to 26 DEC 2024

SW-4, 28 NOV 2024 to 26 DEC 2024