

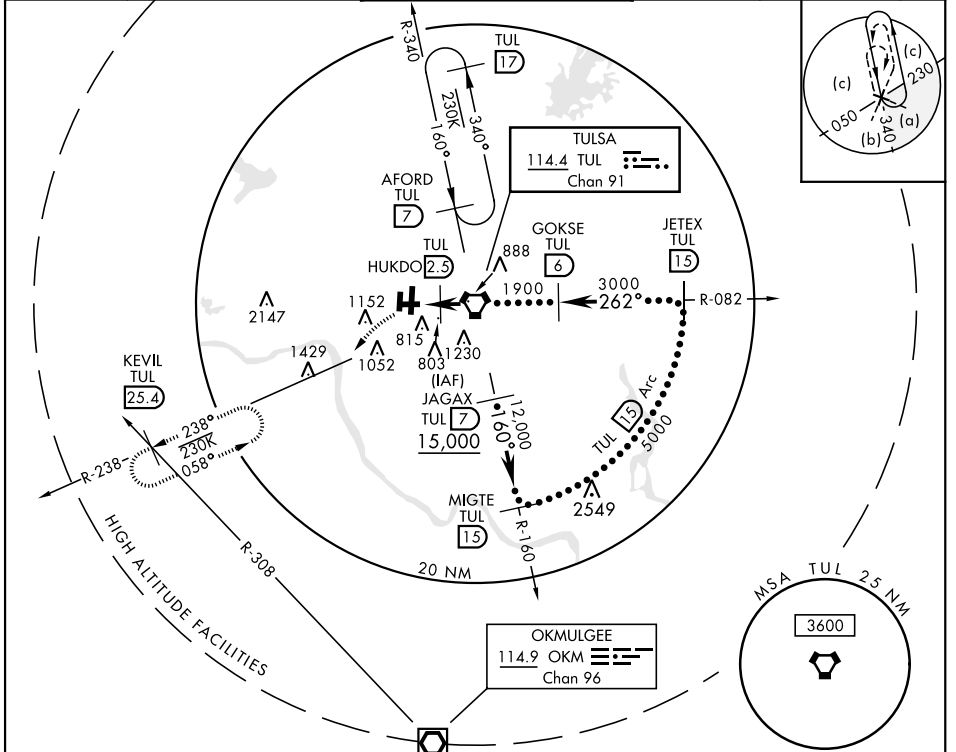
TULSA, OKLAHOMA

HI-VOR Z or TACAN Z RWY 26

VORTAC TUL 114.4 Chan 91	APCH CRS 262°	Rwy ldg TDZE 652 Arprt Elev 678	[USAF]	TULSA INTL (KTUL)
--	-------------------------	---	--------	-------------------

DME required	MALSR (A5)	MISSED APPROACH: Climbing left turn to 2600 on heading 220° and TUL VORTAC R-238 to KEVIL/TUL 25.4 DME and hold.
--------------	------------	--

ATIS 124.9 377.2	APP CON 124.0 338.3 175°-354° 119.1 351.8 355°-174°	TOWER 121.2 310.8 Rwy 18L-36R, 8-26 118.7 257.8 Rwy 18R-36L	GND CON 121.9 348.6	CLNC DEL 134.05 284.7	ASR
----------------------------	---	---	-------------------------------	---------------------------------	-----



EMERG SAFE ALT 100 NM 4500		ELEV 678	TDZE 652
 hdg 220° TUL R-238 KEVIL TUL (25.4)	 VORTAC HUKDO (2.5) TCH 57 3000 1900 1200 1.7 NM 2.5 NM	 JETEX R-082 (15) MIGTE R-160 (15) JAGAX R-160 (7) 160° 15,000 12,000 5000 TUL Arc (15) 160° 15,000	 TWR 809 TUL (17) R-26 360° 706 703 708 704 788 262°
CATEGORY	C	D	E
S-26*	1080- ³ / ₄	428	(500- ³ / ₄)
CIRCLING**	1520-2 ¹ / ₂ 842 (900-2 ¹ / ₂)	1520-2 ³ / ₄ 842 (900-2 ³ / ₄)	1520-3 842 (900-3)

TULSA, OKLAHOMA 36°12'N-95°53'W TULSA INTL (KTUL)

Amdt 3B 30NOV23

HI-VOR Z or TACAN Z RWY 26

SC-1, 28 NOV 2024 to 26 DEC 2024

SC-1, 28 NOV 2024 to 26 DEC 2024