

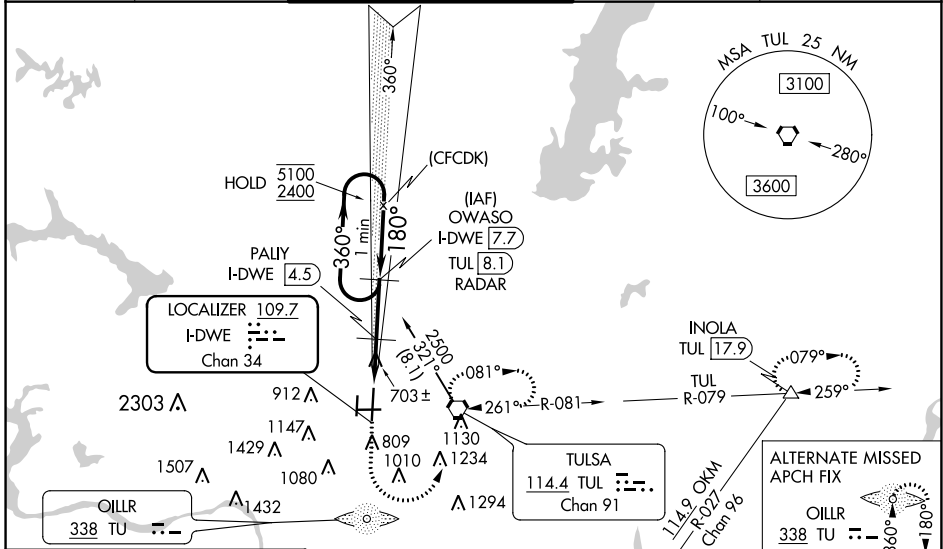
LOC/DME I-DWE 109.7 Chan 34	APP CRS 180°	Rwy Idg TDZE 641 Apt Elev 678
---	------------------------	---

ILS or LOC RWY 18L

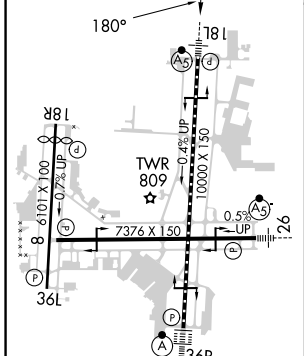
TULSA INTL (TUL)

DME required for LOC only. DME or RADAR required for procedure entry.	MALSR 	MISSED APPROACH: Climb to 2000 then climbing left turn to 2500 direct TUL VORTAC and hold, continue climb-in-hold to 2500. (TACAN aircraft climb to 1800 then climbing left turn to 3500 on TUL VORTAC R-079 to INOLA INT/17.9 DME and hold E, RT, 259° inbound).
--	-----------	---

D-ATIS 124.9 377.2	TULSA APP CON 124.0 338.3	TULSA TOWER 121.2 310.8 (Rwys 18L-36R, 8-26) 118.7 257.8 (Rwy 18R-36L)	GND CON 121.9 348.6	CLNC DEL 134.05 284.7
------------------------------	-------------------------------------	--	-------------------------------	---------------------------------



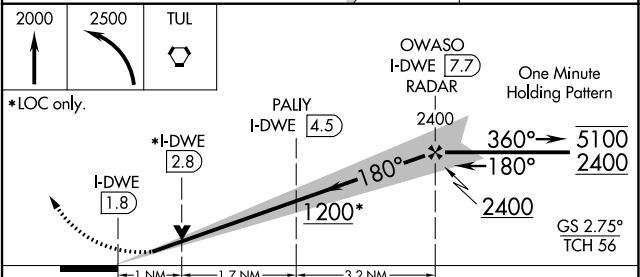
ELEV 678	D	TDZE 641
----------	----------	----------



TDZ/CL Rwy 36R
HIRL Rwys 8-26, 18L-36R and 18R-36L
REIL Rwys 8, 18R and 36L

FAF to MAP 5.9 NM

Knots	60	90	120	150	180
Min:Sec	5:54	3:56	2:57	2:22	1:58



CATEGORY	A	B	C	D	E
S-ILS 18L #	841/24		200 (200-1/2)		
S-LOC 18L	1200/24	559 (600-1/2)	1200/60 559 (600-1/4)		
C CIRCLING	1200-1	522 (600-1)	1520-2 1/2 842 (900-2 1/2)	1520-2 3/4 842 (900-2 3/4)	1520-3 842 (900-3)
PALIY FIX MINIMUMS (DME REQUIRED)					
S-LOC 18L	960/24	319 (300-1/2)	960/40 319 (300-3/4)		
C CIRCLING	1120-1 442 (500-1)	1160-1 482 (500-1)	1520-2 1/2 842 (900-2 1/2)	1520-2 3/4 842 (900-2 3/4)	1520-3 842 (900-3)

SC-1, 28 NOV 2024 to 26 DEC 2024

SC-1, 28 NOV 2024 to 26 DEC 2024