

# HI-ILS or LOC Z RWY 18L

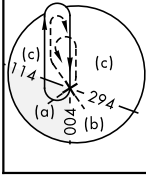
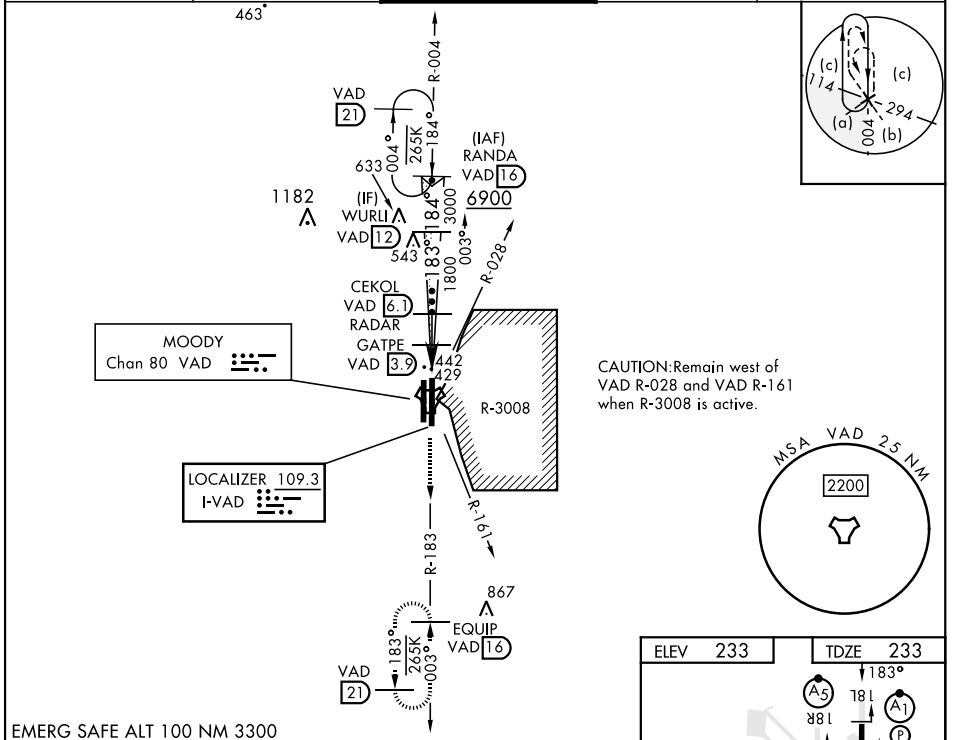
LOC I-VAD <b>109.3</b>	APCH CRS <b>183°</b>	Rwy ldg TDZE Arprt Elev <b>9300</b> <b>233</b> <b>233</b>
---------------------------	-------------------------	--

[USAF]

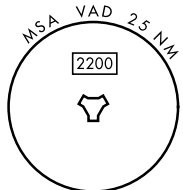
MOODY AFB (KVAD)

RADAR or DME required	ALSF-1 	MISSED APPROACH: Climb to 3000 on VAD TACAN R-183 to EQUIP and hold.
-----------------------	------------	--

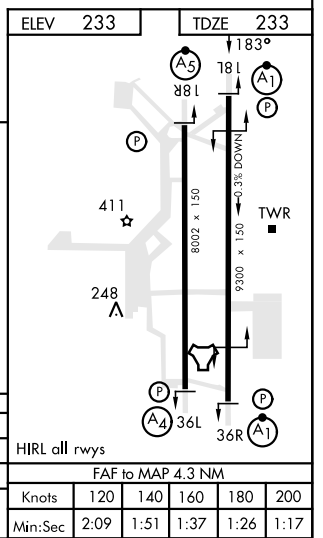
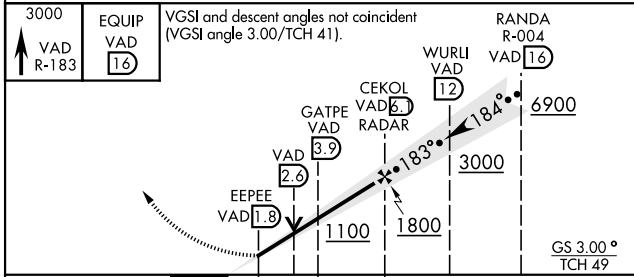
ATIS ★ <b>273.5</b>	VALDOSTA APP CON <b>126.6 285.6</b>	TOWER ★ <b>128.45</b> (CTAF) <b>257.625</b>	GND CON <b>138.95 275.8</b>	CLNC DEL <b>120.625 296.7</b>
------------------------	--	--	--------------------------------	----------------------------------



CAUTION: Remain west of VAD R-028 and VAD R-161 when R-3008 is active.



EMERG SAFE ALT 100 NM 3300



CATEGORY	C	D	E
S-ILS 18L*	433/24	200	(200-½)
S-LOC 18L**	680/45	447	(500-7/8)
CIRCLING	760-1½ 527 (600-1½)	800-2	567 (600-2)

HIRL all rws					
FAF to MAP 4.3 NM					
Knots	120	140	160	180	200
Min:Sec	2:09	1:51	1:37	1:26	1:17

# HI-ILS or LOC Z RWY 18L

SE-4, 28 NOV 2024 to 26 DEC 2024

SE-4, 28 NOV 2024 to 26 DEC 2024