

VALDOSTA, GEORGIA

RNAV (GPS) RWY 18L

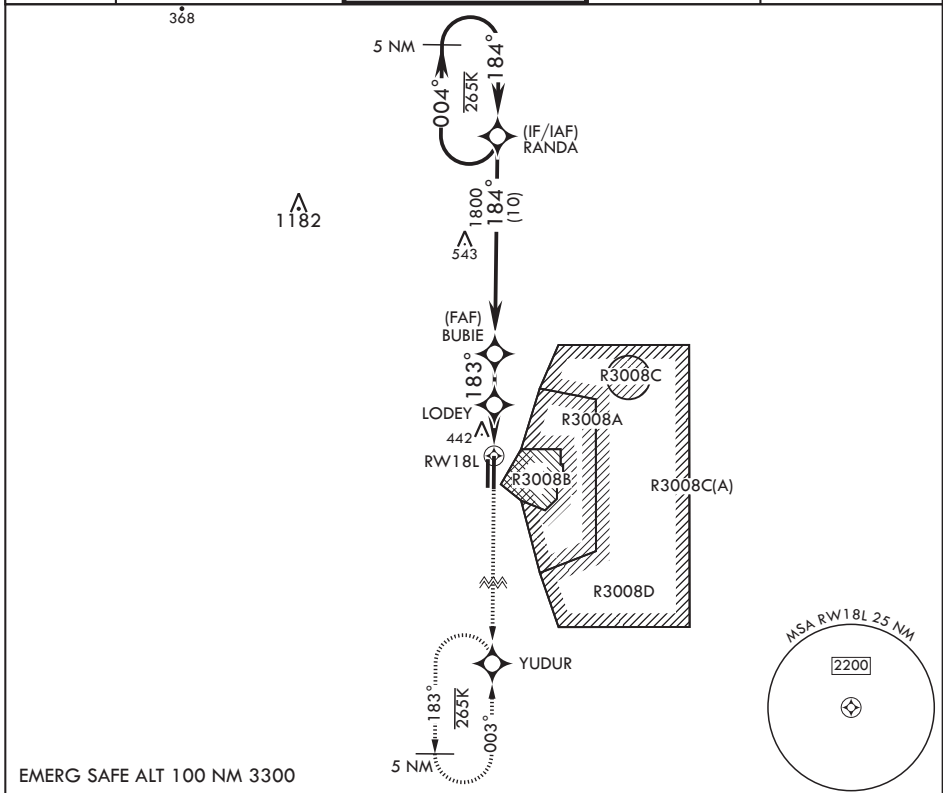
APCH CRS 183°	Rwy Idg 9300
	TDZE 233
	Arprt Elev 233

(USAF)

MOODY AFB (KVAD)

RNP APCH-GPS	ALSF-1	MISSED APPROACH: Climb to 3000 direct YUDUR and hold.
▼ * When ALS inop, increase CAT AB RVR to 55 and vis to 1 mile, CAT CDE vis to 1 3/8 miles.		

ATIS* 273.5	VALDOSTA APP CON 126.6 285.6	TOWER* 128.45 (CTAF) 257.625	GND CON 138.95 275.8	CLNC DEL 120.625 296.7
-----------------------	--	--	--------------------------------	----------------------------------



EMERG SAFE ALT 100 NM 3300

<p>3000 YUDUR </p> <p>ELEV 233 TDZE 233</p>																			
<table border="1"> <thead> <tr> <th>CATEGORY</th> <th>A</th> <th>B</th> <th>C</th> <th>D</th> <th>E</th> </tr> </thead> <tbody> <tr> <td>LNVA MDA*</td> <td>700/24</td> <td>467 (500-½)</td> <td>700/50</td> <td>467</td> <td>(500-1)</td> </tr> <tr> <td> CIRCLING</td> <td>760-1</td> <td>527 (600-1)</td> <td>760-1½ 527 (600-1½)</td> <td>800-2</td> <td>567 (600-2)</td> </tr> </tbody> </table>	CATEGORY	A	B	C	D	E	LNVA MDA*	700/24	467 (500-½)	700/50	467	(500-1)	CIRCLING	760-1	527 (600-1)	760-1½ 527 (600-1½)	800-2	567 (600-2)	<p>HIRL all Rwys</p>
CATEGORY	A	B	C	D	E														
LNVA MDA*	700/24	467 (500-½)	700/50	467	(500-1)														
CIRCLING	760-1	527 (600-1)	760-1½ 527 (600-1½)	800-2	567 (600-2)														

VALDOSTA, GEORGIA

30°58'N - 83°12'W

MOODY AFB (KVAD)

Amdt 2 25JAN24

RNAV (GPS) RWY 18L

SE-4, 28 NOV 2024 to 26 DEC 2024

SE-4, 28 NOV 2024 to 26 DEC 2024