

VALDOSTA, GEORGIA

RNAV (GPS) RWY 36R

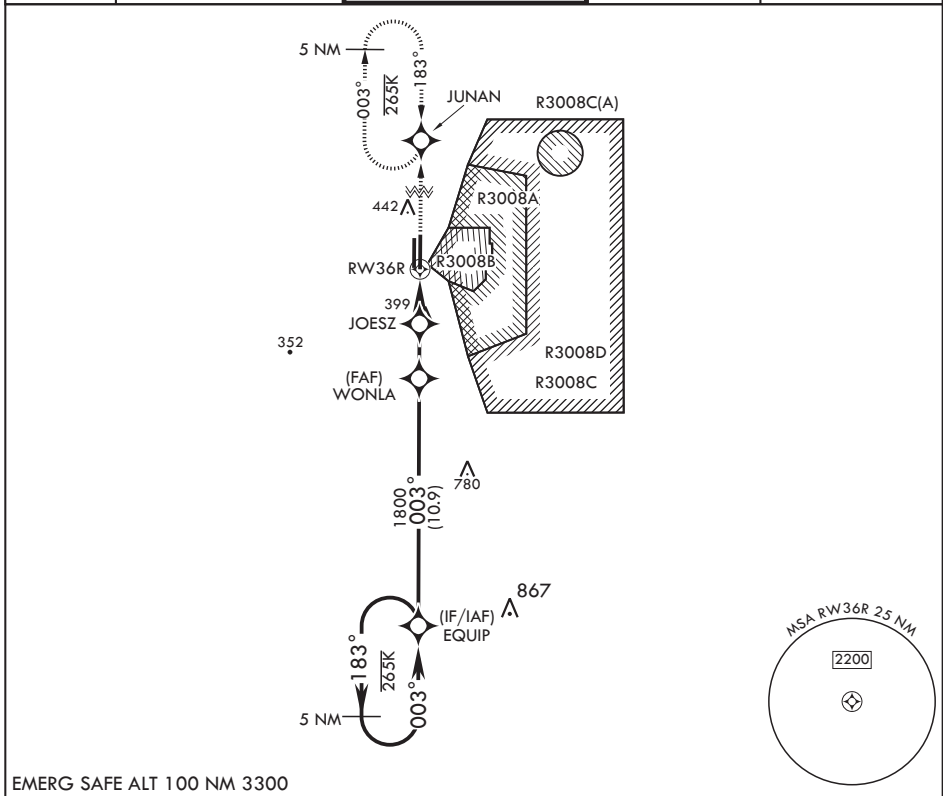
APCH CRS 003°	Rwy Idg 9300
	TDZE 217
	Arprt Elev 233

- (USAF)

MOODY AFB (KVAD)

RNP APCH-GPS	ALSF-1	MISSED APPROACH: Climb to 3000 direct to JUNAN and hold.
<p>▼ * When ALS inop, increase CAT AB RVR to 55 and vis to 1 mile, CAT CDE vis to 1 3/8 miles.</p>		

ATIS★ 273.5	VALDOSTA APP CON 126.6 285.6	TOWER★ 128.45 (CTAF) 257.625	GND CON 138.95 275.8	CLNC DEL 120.625 296.7
----------------	---------------------------------	---------------------------------	-------------------------	---------------------------



		<table border="1"> <tr> <td>3000</td> <td>JUNAN</td> <td>ELEV 233</td> </tr> <tr> <td colspan="2"></td> <td>TDZE 217</td> </tr> </table>	3000	JUNAN	ELEV 233			TDZE 217
3000	JUNAN	ELEV 233						
		TDZE 217						
CATEGORY	A	B	C	D	E			
LNAV MDA*	660/24	443 (500-½)	660/45	443	(500-¾)			
CIRCLING	760-1	527 (600-1)	760-1½ 527 (600-1½)	800-2	567 (600-2)			

VALDOSTA, GEORGIA

30°58'N - 83°12'W

MOODY AFB (KVAD)

Amdt 2 25JAN24

RNAV (GPS) RWY 36R

SE-4, 28 NOV 2024 to 26 DEC 2024

SE-4, 28 NOV 2024 to 26 DEC 2024