

TACAN Y RWY 18R

TACAN VAD Chan 80	APCH CRS 180°	Rwy Idg TDZE Arprt Elev 8002 231 233	[USAF]	MOODY AFB (KVAD)
-----------------------------	-------------------------	--	--------	------------------

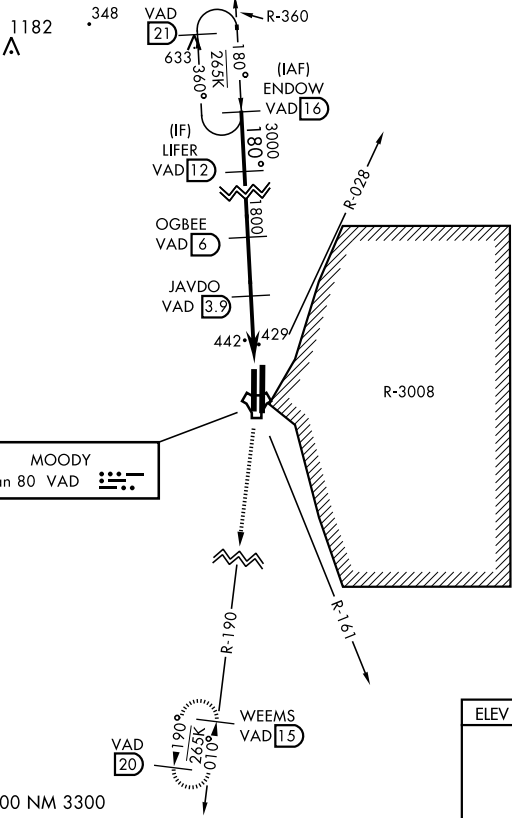
▼ * When ALS inop, increase CAT AB RVR to 55 and vis to 1 mile, CAT CDE vis to 1½ miles.

MALSR **A5**

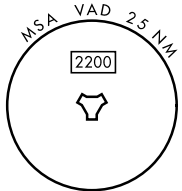
MISSED APPROACH: Climb to 3000 on VAD TACAN R-190 to WEEMS and hold.

ATIS ★ 273.5	VALDOSTA APP CON 126.6 285.6	TOWER ★ (CTAF) 128.45 257.625	GND CON 138.95 275.8	CLNC DEL 120.625 296.7
------------------------	--	---	--------------------------------	----------------------------------

Rwy 18R helicopter visibility reduction below RVR 4000 not authorized.

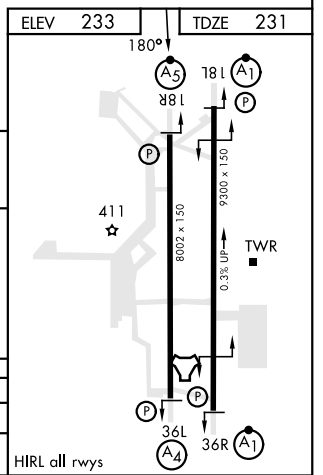


CAUTION: Remain west of VAD R-028 and VAD R-161 when R-3008 is active.



EMERG SAFE ALT 100 NM 3300

Profile view diagram showing altitudes and distances:
 - LIFER (VAD 12) at 3000 ft MSL.
 - OGBEE (VAD 6) at 1800 ft MSL.
 - JAVDO (VAD 3.9) at 1120 ft MSL.
 - DESEE (VAD 1.7) at 760 ft MSL.
 - TACAN at 527 ft MSL.
 - WEEMS VAD 15 at 231 ft MSL.
 - Distances: 2.2 NM between LIFER and OGBEE, 2.2 NM between OGBEE and TACAN, 0.5 NM between TACAN and WEEMS VAD 15.
 - TCH 50 (2.95°) is indicated.



CATEGORY	A	B	C	D	E
S-18R *	700/40 469 (500-¾)		700/50 469 (500-1)		
CIRCLING	760-1 527 (600-1)		760-1½ 527 (600-1½)	800-2 567 (600-2)	

TACAN Y RWY 18R

SE-4, 28 NOV 2024 to 26 DEC 2024

SE-4, 28 NOV 2024 to 26 DEC 2024