

VALPARAISO DESTIN FT WALTON BEACH, FLORIDA

RNAV (GPS) RWY 30

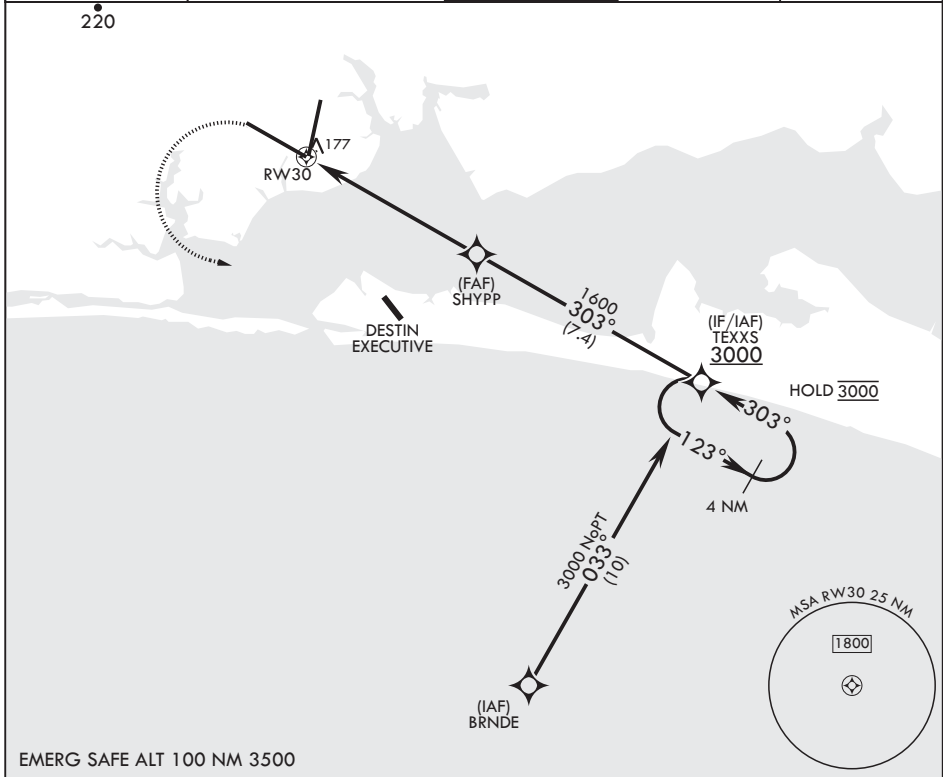
APCH CRS 303°	Rwy Idg TDZE Arprt Elev	12,004 68 84
-------------------------	-------------------------------	---

- (USAF) EGLIN AFB DESTIN FORT WALTON BEACH (KVPS)

RNP APCH - GPS
* When ALS inop increase CAT AB RVR to 55, vis to 1 mile; CAT CDE vis to 1 1/4 miles.

ALSF-1 MISSED APPROACH: Climb to 600 then climbing left turn to 3000 direct TEXXS and hold.

ATIS★ 134.625 273.5	APP CON/DEP CON 125.1 281.45 271°-089° 132.1 360.6 090°-270°	TOWER 118.2 353.65	GND CON 121.8 335.8	CLNC DEL 127.7 377.2
-------------------------------	--	------------------------------	-------------------------------	--------------------------------



EMERG SAFE ALT 100 NM 3500

600	3000	TEXXS	VGSI and descent angle not coincident (VGSI angle 2.5° TCH 80 ft).	4 NM Holding Pattern	ELEV 84	TDZE 68
					† Rwy 20 apch lgt 1500' nonstandard.	
CATEGORY	A	B	C	D	E	
LNAV MDA*	500/24	432 (500-½)	500/40	432	(500-¾)	
CIRCLING	600-1	516 (600-1)	680-1½ 596 (600-1½)	680-2 596 (600-2)	700-2¼ 616 (700-2¼)	HIRL all Rwys

VALPARAISO DESTIN FT WALTON BEACH, FLORIDA

EGLIN AFB DESTIN FORT WALTON BEACH (KVPS)

Amdt 1 16MAY24

30°29'N - 86°32'W

RNAV (GPS) RWY 30

SE-3, 28 NOV 2024 to 26 DEC 2024

SE-3, 28 NOV 2024 to 26 DEC 2024