

# TACAN RWY 2

TACAN DWG Chan 2	APCH CRS 003°	Rwy Idg 10,012	TDZE 59	Arprt Elev 84
---------------------	------------------	-------------------	------------	------------------

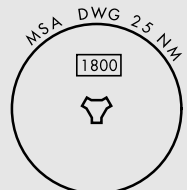
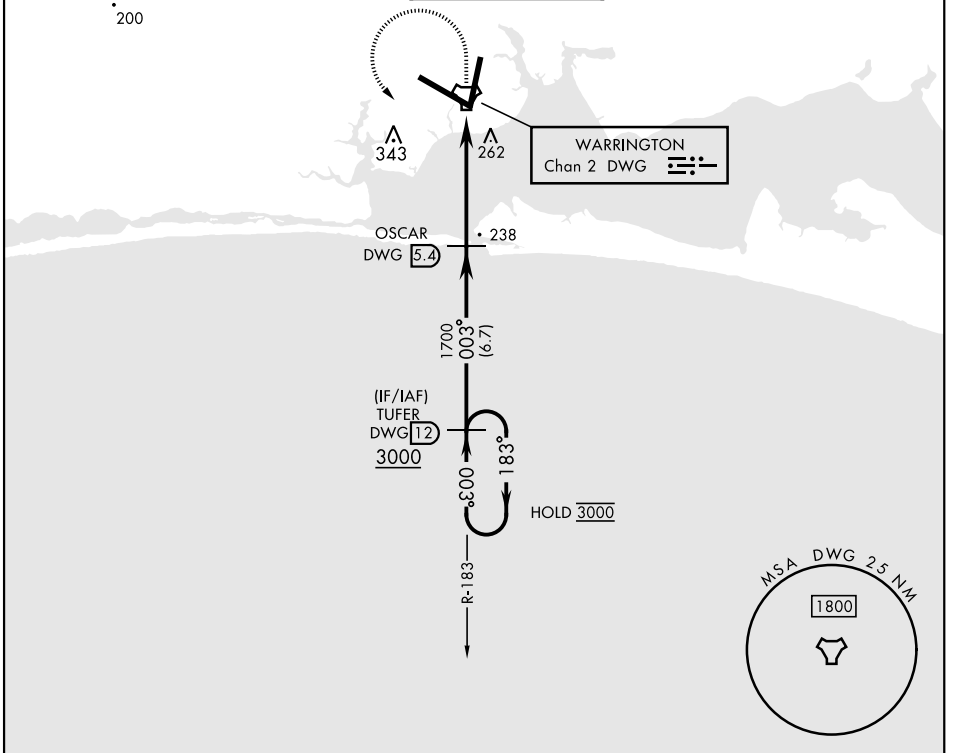
[USAF] EGLIN AFB DESTIN FORT WALTON BEACH (KVPS)

\* When ALS inop, increase CAT AB RVR to 55, vis to 1 mile, CAT CDE RVR to 60, vis to 1 1/8 miles.

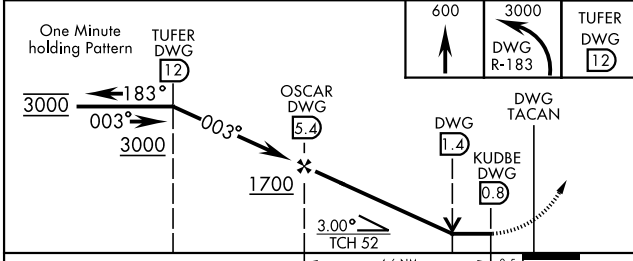


MISSED APPROACH: Climb to 600, then climbing, left turn to 3000 and intercept DWG TACAN R-183 to TUFER/12 DME and hold.

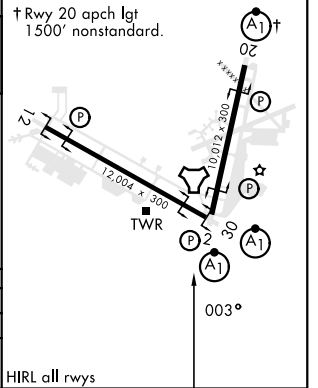
ATIS * 134.625 273.5	APP CON 125.1 281.45 271°-089° 132.1 360.6 090°-270°	TOWER 118.2 353.65	GND CON 121.8 335.8	CLNC DEL 127.7 377.2
-------------------------	--	-----------------------	------------------------	-------------------------



EMERG SAFE ALT 100 NM 3500



ELEV 84	TDZE 59
---------	---------



CATEGORY	A	B	C	D	E
S-2*	460/24	401 (400-1/2)	460/40	401 (400-3/4)	
CIRCLING	600-1	516 (600-1)	680-1 1/2 596 (600-1 1/2)	680-2 596 (600-2)	700-2 1/4 616 (700-2 1/4)

HIRL all rwys

# TACAN RWY 2

SE-3, 28 NOV 2024 to 26 DEC 2024

SE-3, 28 NOV 2024 to 26 DEC 2024