

WAAS CH 53611 W22A	APP CRS 223°	Rwy Idg TDZE Apt Elev	4945 23 24
--	------------------------	-----------------------------	---------------------------------------

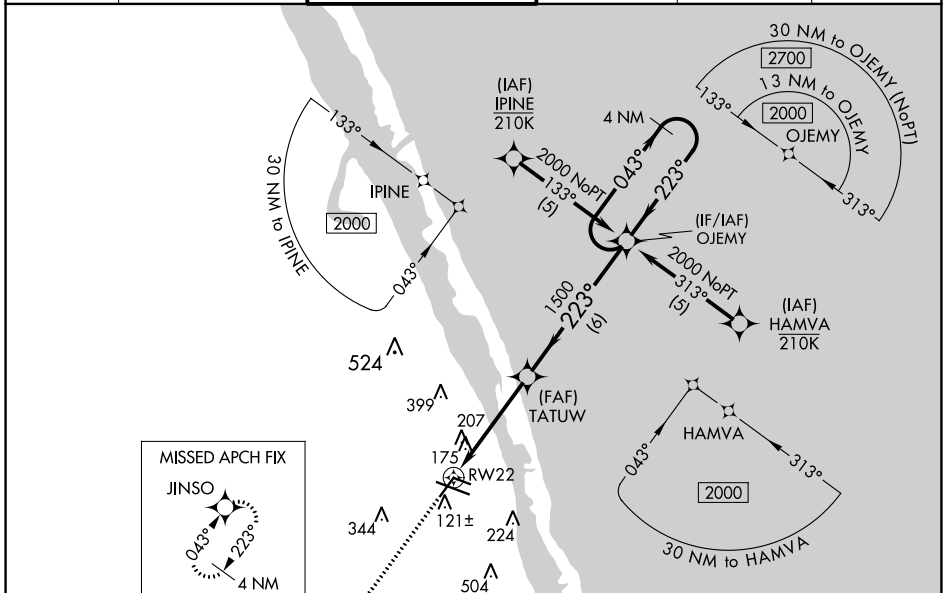
RNAV (GPS) RWY 22

VERO BEACH RGNL (VRB)

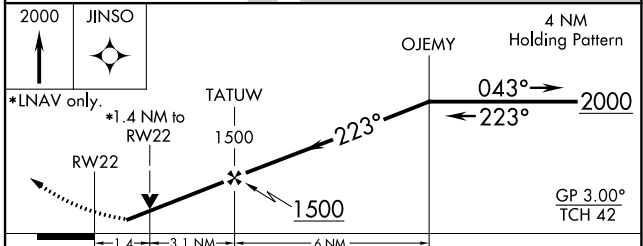
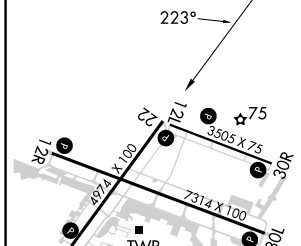
⚠ Circling to Rwy 30R NA at night. For uncompensated Baro-VNAV systems, LNAV/VNAV NA below 0°C (32°F) or above 43°C (109°F). DME/DME RNP-0.3 NA. When local altimeter setting not received, use Fort Pierce altimeter setting and increase LPV DA to 363 feet and all visibilities 1/8 SM; increase LNAV/VNAV DA to 567 feet and all visibilities 1/8 SM; increase all MDAs 40 feet and LNAV Cat C/D visibility 1/8 SM and Circling Cat C/D visibility 1/4 SM. Baro-VNAV and VDP NA when using Fort Pierce altimeter setting. Rwy 22 helicopter visibility reduction below 3/4 SM NA.

MISSED APPROACH:
Climb to 2000 direct
JINSO and hold.

ATIS 120.575	PALM BEACH APP CON 123.625 225.4 (N)	VERO BEACH TOWER * 126.3 (CTAF) 0	GND CON 127.45	CLNC DEL 134.975	UNICOM 122.95
------------------------	--	---	--------------------------	----------------------------	-------------------------



ELEV 24	D	TDZE 23
---------	----------	---------



CATEGORY	A	B	C	D
LPV DA		340-1	317 (400-1)	
LNAV/VNAV DA		544-1 3/4	521 (600-1 3/4)	
LNAV MDA	520-1	497 (500-1)	520-1 3/8	497 (500-1 3/8)
CIRCLING	560-1	536 (600-1)	660-1 3/4 636 (700-1 3/4)	820-2 1/2 796 (800-2 1/2)

MIRL Rwy 4-22, 12R-30L, and 12L-30R
 REIL Rwy 4, 12R, 22 and 30L