

WAAS CH 65919 W01A	APP CRS 007°	Rwy Idg TDZE 7005 511 Apt Elev 516
--	------------------------	--

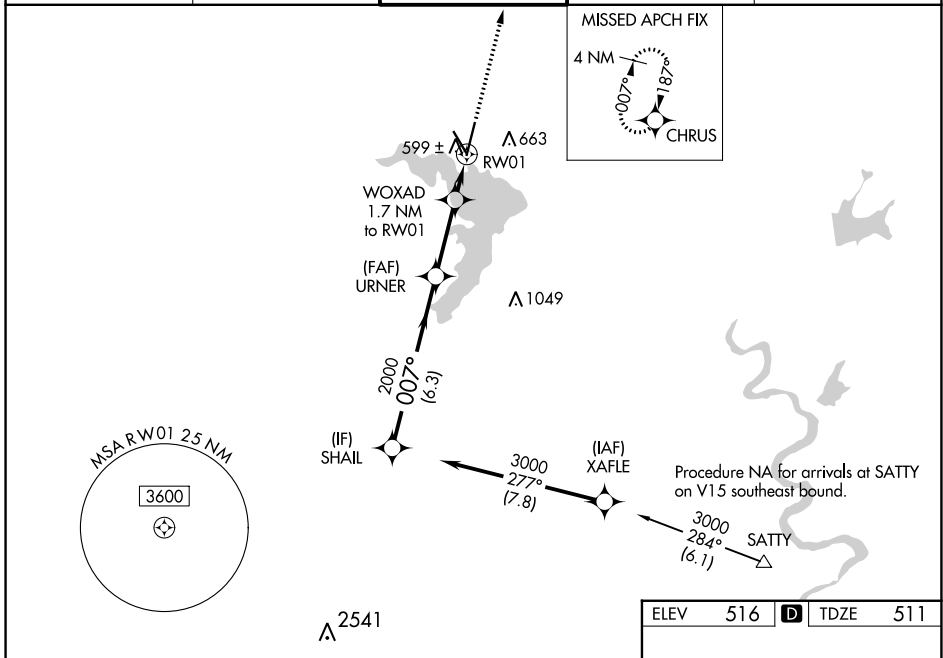
RNAV (GPS) RWY 1

WACO RGNL (ACT)

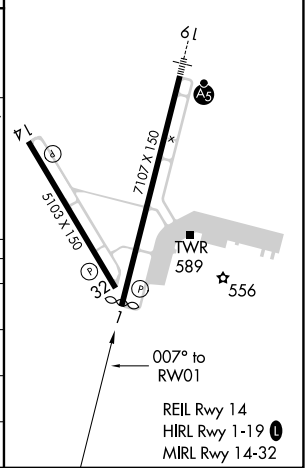
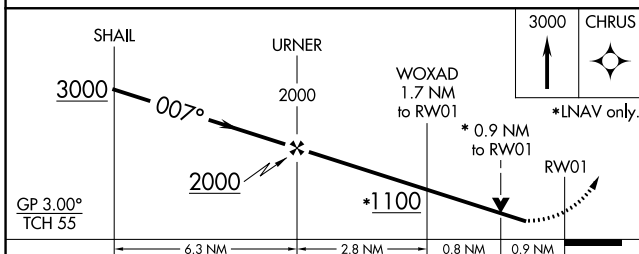
⚠ For uncompensated Baro-VNAV systems, LNAV/VNAV NA below -7°C (19°F) or above 54°C (130°F).
⚠ DME/DME RNP-0.3 NA. When local altimeter setting not received, use Mc Gregor Exec altimeter setting and increase all DA 31 feet and all MDA 40 feet; increase LPV all Cats and LNAV/VNAV all Cats visibility 1/8 mile and Circling Cat D 1/4 mile. Baro-VNAV and VDP NA with Mc Gregor Exec altimeter setting. Helicopter visibility reduction below 3/4 SM NA.

MISSED APPROACH:
Climb to 3000 direct CHRUS and hold.

ATIS 123.85	WACO APP CON ★ 127.65 227.125	WACO TOWER ★ 119.3 (CTAF) 0 257.8	GND CON 121.9	UNICOM 122.95
-----------------------	---	---	-------------------------	-------------------------



ELEV	516	D	TDZE	511
------	-----	---	------	-----



CATEGORY	A	B	C	D
LPV DA		761-3/4	250 (300-3/4)	
LNAV/VNAV DA		782-7/8	271 (300-7/8)	
LNAV MDA		860-1	349 (400-1)	
CIRCLING	940-1 424 (500-1)	980-1 464 (500-1)	1020-1 1/2 504 (600-1 1/2)	1160-2 644 (700-2)

SC-3, 28 NOV 2024 to 26 DEC 2024

SC-3, 28 NOV 2024 to 26 DEC 2024