

WAAS CH 56520 W14A	APP CRS 142°	Rwy Idg TDZE 513 Apt Elev 516	5103
--	------------------------	---	-------------

RNAV (GPS) RWY 14

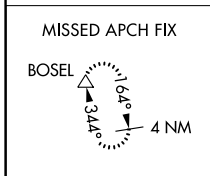
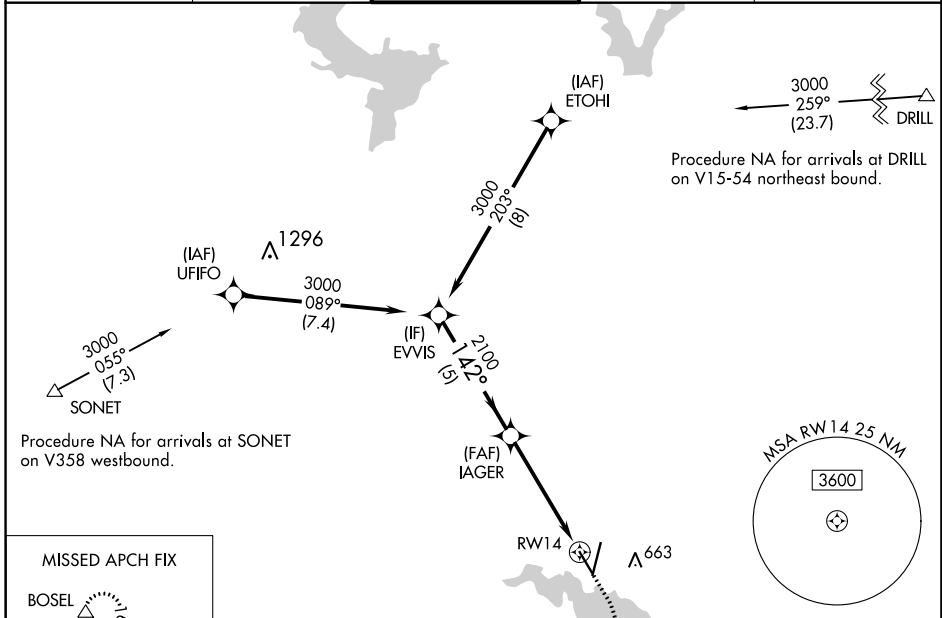
WACO RGNL (ACT)

RNP APCH.

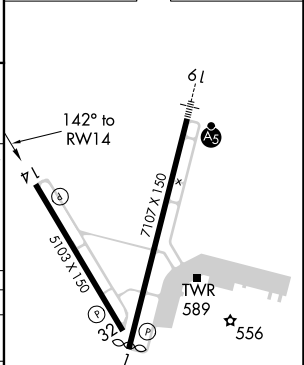
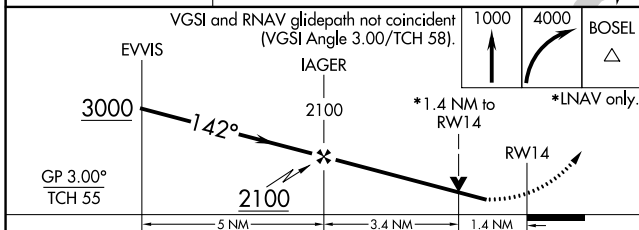
ASR Rwy 14 helicopter visibility reduction below 3/4 SM NA. For uncompensated Baro-VNAV systems, procedure NA below -8°C or above 54°C.

MISSED APPROACH: Climb to 1000 then climbing right turn to 4000 direct BOSEL and hold, continue climb-in-hold to 4000.

ATIS 123.85	WACO APP CON * 127.65 227.125	WACO TOWER * 119.3 (CTAF) 0 257.8	GND CON 121.9	UNICOM 122.95
-----------------------	---	---	-------------------------	-------------------------



ELEV 516	D TDZE 513
----------	-------------------



CATEGORY	A	B	C	D
LPV DA		763-3/4	250 (300-3/4)	
RNAV/VNAV DA		763-3/4	250 (300-3/4)	
RNAV MDA	1020-1	507 (600-1)	1020-1 3/8	507 (600-1 3/8)
C CIRCLING	1020-1	504 (600-1)	1020-1 1/2 504 (600-1 1/2)	1160-2 644 (700-2)

REIL Rwy 14
HIRL Rwy 1-19 **0**
MIRL Rwy 14-32

SC-3, 28 NOV 2024 to 26 DEC 2024

SC-3, 28 NOV 2024 to 26 DEC 2024