

TACAN Y RWY 15

TACAN WRB Chan 10	APCH CRS 143°	Rwy ldg 12,001 TDZE 294 Arprt Elev 294
-----------------------------	-------------------------	-------------------------------------------------------------------

[USAF]

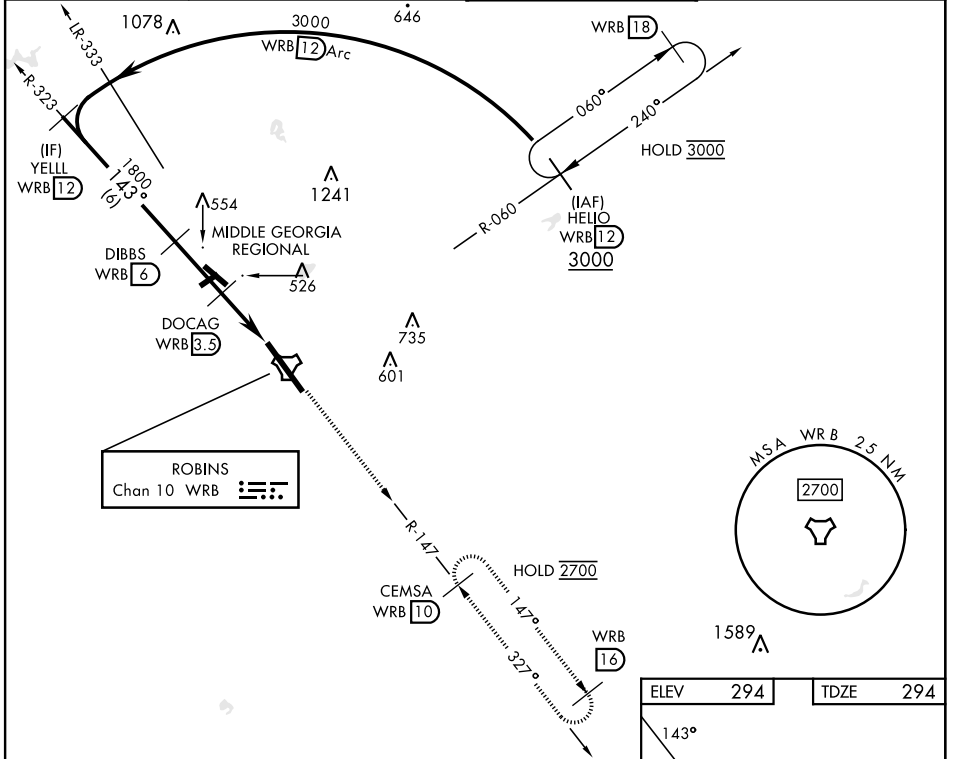
ROBINS AFB (KWRB)

*When ALS inop, increase CAT AB RVR to 55, vis to 1 mile; CAT CDE vis to 1 1/2 miles.
 **Circling not authorized SW of Rwy 15-33.

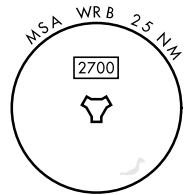


MISSED APPROACH: Climb To 2700 on WRB TACAN R-147 to CEMSA and hold.

ATIS 119.475 273.475	ATLANTA APP CON 124.2 279.6	TOWER 133.225 257.975	GND CON 121.85 275.8
--------------------------------	---------------------------------------	---------------------------------	--------------------------------

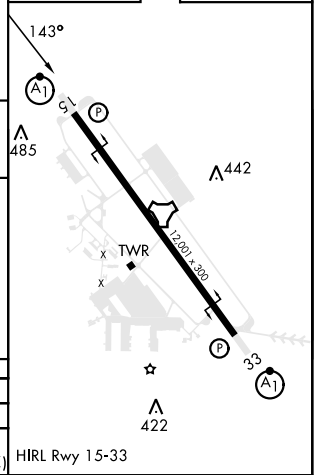
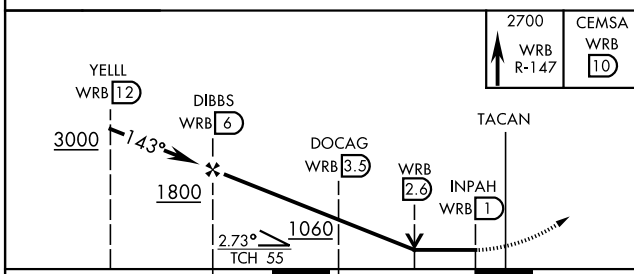


ROBINS
Chan 10 WRB



ELEV 294	TDZE 294
----------	----------

EMERG SAFE ALT 100 NM 3700



CATEGORY	A	B	C	D	E
S-15*	820/24	526 (600-1/2)	820/55	526 (600-1)	
CIRCLING**	820-1	526 (600-1)	880-1 1/2 586 (600-1 1/2)	960-2 666 (700-2)	1040-2 3/4 746 (800-2 3/4)

HIRL Rwy 15-33

TACAN Y RWY 15

SE-4, 28 NOV 2024 to 26 DEC 2024

SE-4, 28 NOV 2024 to 26 DEC 2024