

24305

AIRPORT DIAGRAM

RONALD REAGAN WASHINGTON NTL (DCA)

AL-443 (FAA)

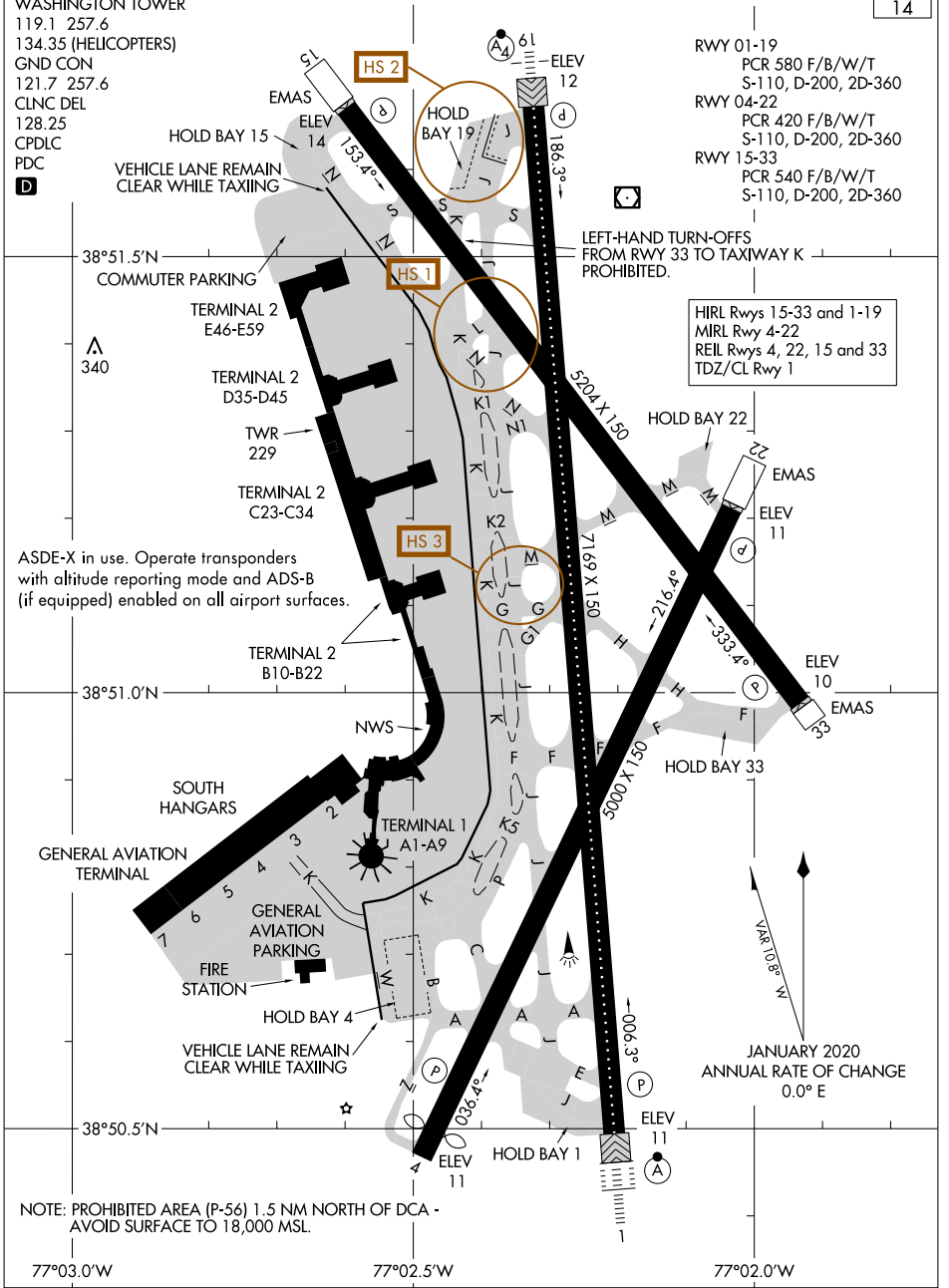
WASHINGTON, DC

D-ATIS
132.65
WASHINGTON TOWER
119.1 257.6
134.35 (HELICOPTERS)
GND CON
121.7 257.6
CLNC DEL
128.25
CPDLC
PDC
D

CAUTION: BE ALERT TO RUNWAY CROSSING CLEARANCES.

READBACK OF ALL RUNWAY HOLDING INSTRUCTIONS IS REQUIRED.

FIELD
ELEV
14



- RWY 01-19
PCR 580 F/B/W/T
S-110, D-200, 2D-360
- RWY 04-22
PCR 420 F/B/W/T
S-110, D-200, 2D-360
- RWY 15-33
PCR 540 F/B/W/T
S-110, D-200, 2D-360

LEFT-HAND TURN-OFFS FROM RWY 33 TO TAXIWAY K PROHIBITED.

- HIRL Rwy 15-33 and 1-19
- MIRL Rwy 4-22
- REIL Rwy 4, 22, 15 and 33
- TDZ/CL Rwy 1

ASDE-X in use. Operate transponders with altitude reporting mode and ADS-B (if equipped) enabled on all airport surfaces.

NOTE: PROHIBITED AREA (P-56) 1.5 NM NORTH OF DCA - AVOID SURFACE TO 18,000 MSL.

NE-3, 28 NOV 2024 to 26 DEC 2024

NE-3, 28 NOV 2024 to 26 DEC 2024

AIRPORT DIAGRAM

24305

WASHINGTON, DC

RONALD REAGAN WASHINGTON NTL (DCA)