

| | | | |
|---|------------------------|---|-------------|
| LOC/DME I-ASO 109.9 Chan 36 | APP CRS 149° | Rwy Idg TDZE 13 Apt Elev 14 | 6869 |
|---|------------------------|---|-------------|

LDA Y RWY 19

RONALD REAGAN WASHINGTON NTL (DCA)

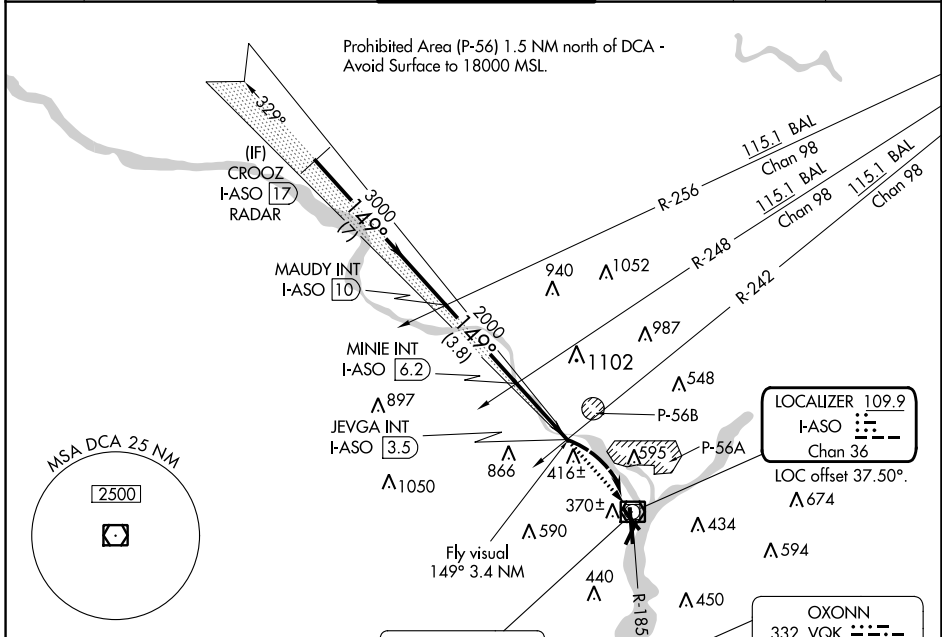
RADAR required for procedure entry. ADF or DME required.

⚠ Circling NA northeast of Rwy 15-33. Inop table does not apply.
⚠ Rwy 19 helicopter visibility reduction below 1 SM NA.

MALSF

MISSED APPROACH: Climb to 1800 direct DCA VOR/DME and on DCA VOR/DME R-185 to OXONN NDB/DCA 5.6 DME and hold.

| | | | | | |
|-------------------------|---|--|-------------------------------|---------------------------|-------|
| D-ATIS 132.65 | POTOMAC APP CON 119.85 239.25 (WEST/SOUTH) 124.2 360.8 (EAST) | WASHINGTON TOWER 119.1 257.6 | GND CON 121.7 257.6 | CLNC DEL 128.25 | CPDLC |
|-------------------------|---|--|-------------------------------|---------------------------|-------|



NE-3, 28 NOV 2024 to 26 DEC 2024

NE-3, 28 NOV 2024 to 26 DEC 2024

| | | | | | |
|---|----------|---------|------|------|------|
| ELEV 14 | D | TDZE 13 | | | |
| | | | | | |
| TDZ/CL Rwy 1 MIRL Rwy 4-22 REIL Rws 4, 15, 22 and 33 HIRL Rws 1-19 and 15-33 | | | | | |
| FAF to MAP 2.7 NM | | | | | |
| Knots | 60 | 90 | 120 | 150 | 180 |
| Min:Sec | 2:42 | 1:48 | 1:21 | 1:05 | 0:54 |

| | | | | | |
|------------------------------------|-----|---|-----|-----------------------------|--|
| WASHINGTON 111.0 DCA Chan 47 | | LOCALIZER 109.9 I-ASO Chan 36 LOC offset 37.50° Λ 674 | | OXONN 332 VQK DCA 5.6 | |
| CROOZ I-ASO 17 RADAR | | MAUDY INT I-ASO 10 | | MINIE INT I-ASO 6.2 | |
| JEVGA INT I-ASO 3.5 | | Fly visual 149° 3.4 NM | | Fly visual 149° 3.4 NM | |
| 7 NM | | 3.8 NM | | 2.7 NM | |
| 3.4 NM | | | | | |
| 1800 | DCA | DCA R-185 | VQK | | |
| CATEGORY A | | CATEGORY B | | CATEGORY C | |
| S-LDA 19 | | 1100-3 | | 1087 (1100-3) | |
| C CIRCLING | | 1100-3 | | 1086 (1100-3) | |