

WAAS CH <b>53405</b> <b>W12A</b>	APP CRS <b>118°</b>	Rwy Idg TDZE <b>1749</b> Apt Elev <b>1749</b>
--	------------------------	---

# RNAV (GPS) RWY 12

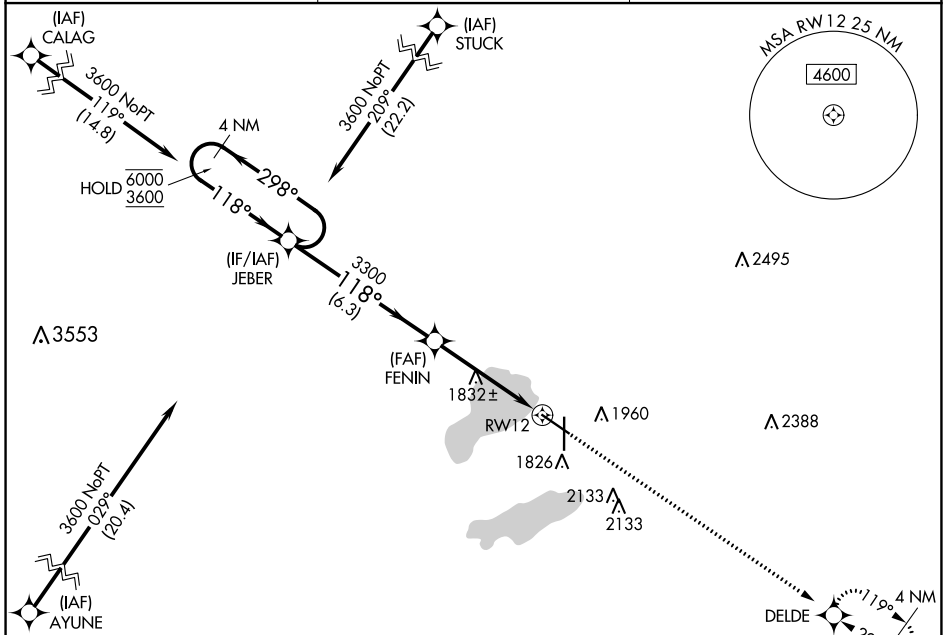
WATERTOWN RGNL (ATY)

RNP APCH - GPS.

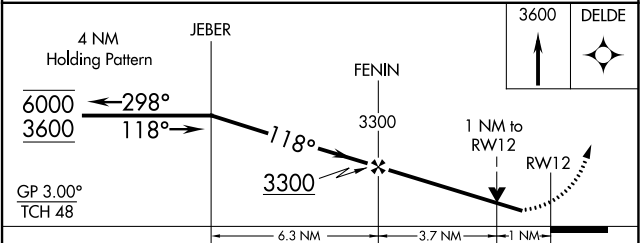
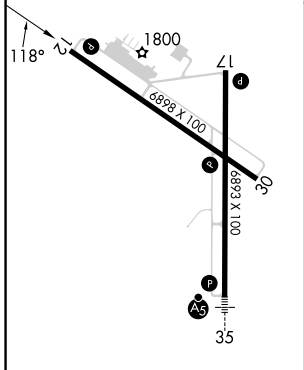
▼ Rwy 12 helicopter visibility reduction below 3/4 SM NA.  
 ▲ For uncompensated Baro-VNAV systems, LNAV/VNAV NA below -18°C or above 54°C.

MISSED APPROACH: Climb to 3600 direct DELDE and hold.

ASOS <b>126.625</b>	MINNEAPOLIS CENTER <b>128.5 306.2</b>	UNICOM <b>123.05 (CTAF) 0</b>
------------------------	--	----------------------------------



ELEV 1749	<b>D</b> TDZE 1749
-----------	--------------------



CATEGORY	A	B	C	D
LPV DA		2021-7/8	272 (300-7/8)	
LNAV/VNAV DA		2076-1	327 (400-1)	
LNAV MDA		2100-1	351 (400-1)	
<b>C</b> CIRCLING	2260-1	511 (600-1)	2500-2 1/4 751 (800-2 1/4)	2500-2 1/2 751 (800-2 1/2)

REIL Rwy 12, 17 and 30 **L**  
 HIRL Rwy 17-35 **L**  
 MIRL Rwy 12-30 **L**

NC-1, 28 NOV 2024 to 26 DEC 2024

NC-1, 28 NOV 2024 to 26 DEC 2024