

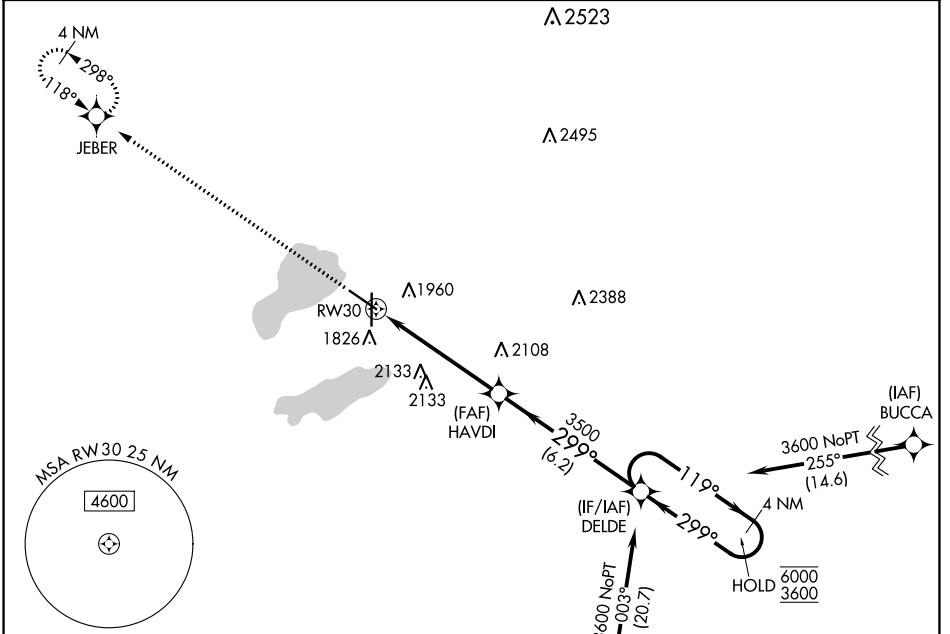
WAAS CH <b>50305</b> <b>W30A</b>	APP CRS <b>299°</b>	Rwy Idg TDZE Apt Elev	<b>6898</b> <b>1735</b> <b>1749</b>
--	------------------------	-----------------------------	---

# RNAV (GPS) RWY 30

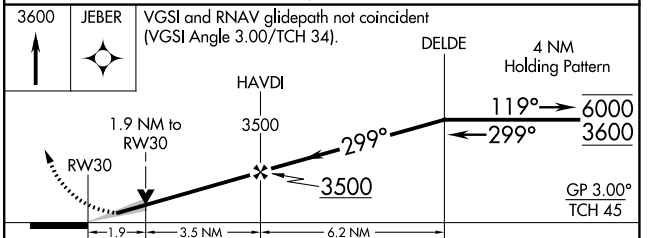
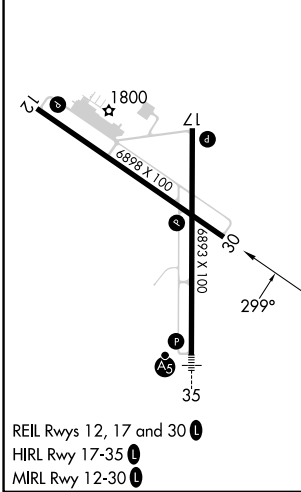
WATERTOWN RGNL (ATY)

RNP APCH - GPS.	MISSED APPROACH: Climb to 3600 direct JEBER and hold.
<p><b>▽</b> For uncompensated Baro-VNAV systems, LNAV/VNAV NA below -18°C or above 54°C.</p> <p><b>▲</b></p>	

ASOS <b>126.625</b>	MINNEAPOLIS CENTER <b>128.5 306.2</b>	UNICOM <b>123.05 (CTAF) 0</b>
------------------------	--	----------------------------------



ELEV 1749	<b>D</b>	TDZE 1735
-----------	----------	-----------



CATEGORY	A	B	C	D
LPV DA	1989- <sup>3</sup> / <sub>4</sub> 254 (300- <sup>3</sup> / <sub>4</sub> )			
LNAV/VNAV DA	2210-1 <sup>3</sup> / <sub>8</sub> 475 (500-1 <sup>3</sup> / <sub>8</sub> )			
LNAV MDA	2360-1	625 (700-1)	2360-1 <sup>3</sup> / <sub>4</sub>	625 (700-1 <sup>3</sup> / <sub>4</sub> )
<b>C</b> CIRCLING	2360-1	611 (700-1)	2500-2 <sup>1</sup> / <sub>4</sub> 751 (800-2 <sup>1</sup> / <sub>4</sub> )	2500-2 <sup>1</sup> / <sub>2</sub> 751 (800-2 <sup>1</sup> / <sub>2</sub> )

NC-1, 28 NOV 2024 to 26 DEC 2024

NC-1, 28 NOV 2024 to 26 DEC 2024