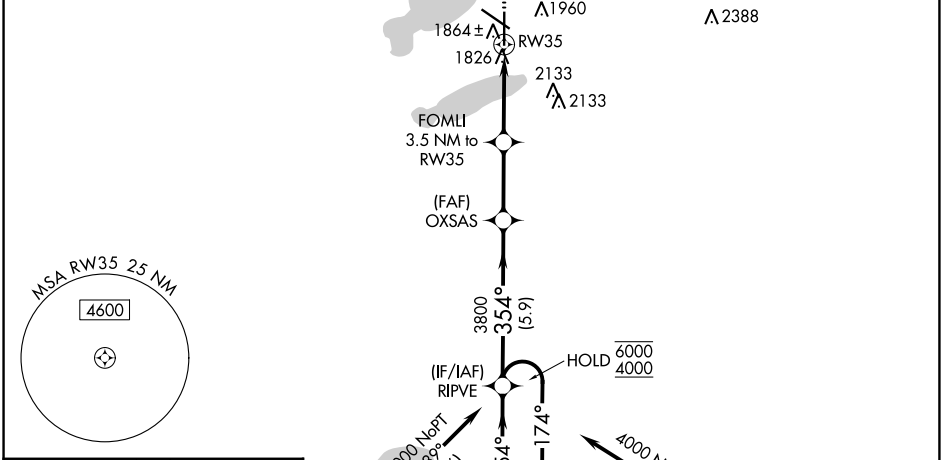
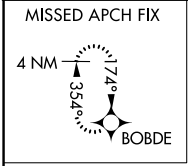


WAAS CH 82614 W35A	APP CRS 354°	Rwy Idg TDZE 1745 Apt Elev 1749
--	------------------------	---

RNAV (GPS) RWY 35

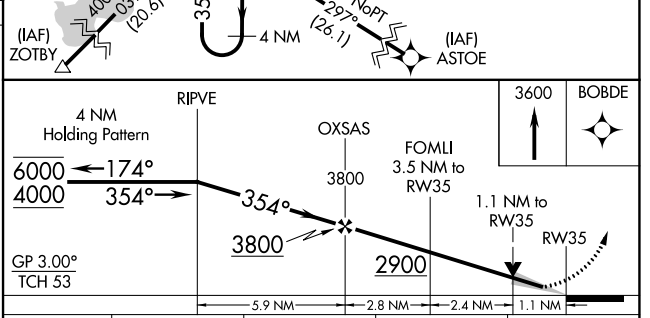
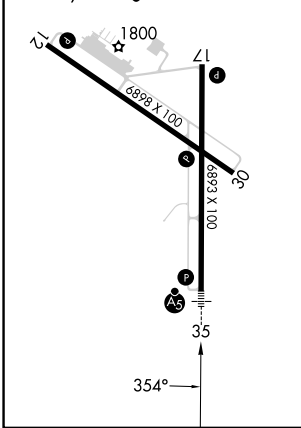
WATERTOWN RGNL (ATY)

RNP APCH - GPS.		MALSR 	MISSED APPROACH: Climb to 3600 direct BOBDE and hold.
ASOS 126.625	MINNEAPOLIS CENTER 128.5 306.2	UNICOM 123.05 (CTAF) 0	



ELEV 1749	D	TDZE 1745
-----------	----------	-----------

REIL Rwy 12, 17 and 30
 HIRL Rwy 17-35
 MIRL Rwy 12-30



CATEGORY	A	B	C	D
LPV DA		1945- $\frac{1}{2}$	200 (200- $\frac{1}{2}$)	
LNAV/VNAV DA		2180- $\frac{3}{4}$	435 (500- $\frac{3}{4}$)	
LNAV MDA	2160- $\frac{1}{2}$	415 (500- $\frac{1}{2}$)	2160- $\frac{3}{4}$	415 (500- $\frac{3}{4}$)
C CIRCLING	2260-1	511 (600-1)	2500-2 $\frac{1}{4}$ 751 (800-2 $\frac{1}{4}$)	2500-2 $\frac{1}{2}$ 751 (800-2 $\frac{1}{2}$)

NC-1, 28 NOV 2024 to 26 DEC 2024

NC-1, 28 NOV 2024 to 26 DEC 2024