

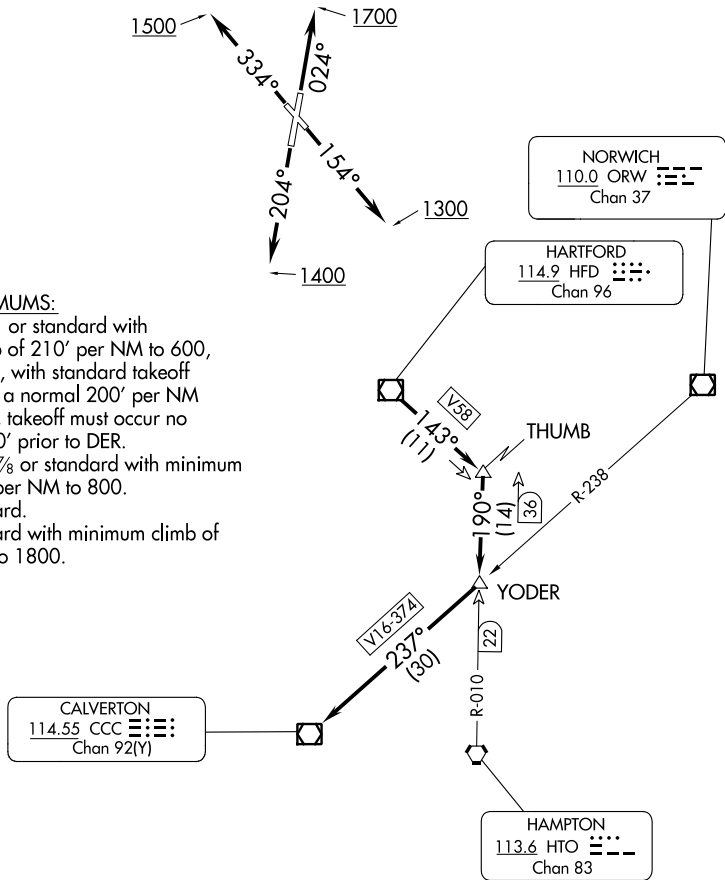
COASTAL NINE DEPARTURE

ATIS
127.1 263.15
GND CON
121.7 289.4
WESTFIELD TOWER ★
118.9 (CTAF) 251.1
BRADLEY DEP CON
125.35 281.5

**TOP ALTITUDE:
3000**

TAKEOFF MINIMUMS:

- Rwy 2: 200-1½ or standard with minimum climb of 210' per NM to 600, or alternatively, with standard takeoff minimums and a normal 200' per NM climb gradient, takeoff must occur no later than 1200' prior to DER.
- Rwy 15: 400-1⅔ or standard with minimum climb of 460' per NM to 800.
- Rwy 20: Standard.
- Rwy 33: Standard with minimum climb of 340' per NM to 1800.



NORWICH
110.0 ORW
Chan 37

HARTFORD
114.9 HFD
Chan 96

CALVERTON
114.55 CCC
Chan 92(Y)

HAMPTON
113.6 HTO
Chan 83

NE-1, 28 NOV 2024 to 26 DEC 2024

NE-1, 28 NOV 2024 to 26 DEC 2024

- NOTE: RADAR required.
- NOTE: Initial departure headings are predicated on avoiding noise sensitive areas, flight crew awareness and compliance is important in minimizing noise impacts on surrounding communities.

(NARRATIVE ON FOLLOWING PAGE)

NOTE: Chart not to scale.

COASTAL NINE DEPARTURE



DEPARTURE ROUTE DESCRIPTION

TAKEOFF RUNWAY 2: Climb on heading 024° to 1700, then as assigned for radar vectors to HFD VOR/DME, thence....

TAKEOFF RUNWAY 15: Climb on heading 154° to 1300, then as assigned for radar vectors to HFD VOR/DME, thence....

TAKEOFF RUNWAY 20: Climb on heading 204° to 1400, then as assigned for radar vectors to HFD VOR/DME, thence....

TAKEOFF RUNWAY 33: Climb on heading 334° to 1500, then as assigned for radar vectors to HFD VOR/DME, thence....

....from over HFD VOR/DME proceed on HFD VOR/DME R-143 to THUMB INT, then on HTO VOR/DME R-010 to YODER INT, then on CCC VOR/DME R-057 to CCC VOR/DME, then on assigned route. Maintain 3000 or assigned altitude. Expect clearance to requested flight level 10 minutes after departure.

NE-1, 28 NOV 2024 to 26 DEC 2024

NE-1, 28 NOV 2024 to 26 DEC 2024