

VORTAC BAF <b>113.0</b> Chan <b>77</b>	APCH CRS <b>208°</b>	Rwy ldg THRE <b>267</b> Arpt Elev <b>270</b>	AL-446 [USAF]	WESTFIELD-BARNES RGNL (KBAF)
--	-------------------------	--	---------------	------------------------------

**⚠** \*When ALS inop, increase CAT CDE vis to 1½ miles.  
 \*\*When ALS inop, increase CAT CDE vis to 1% miles.

**MALS R**  
A5

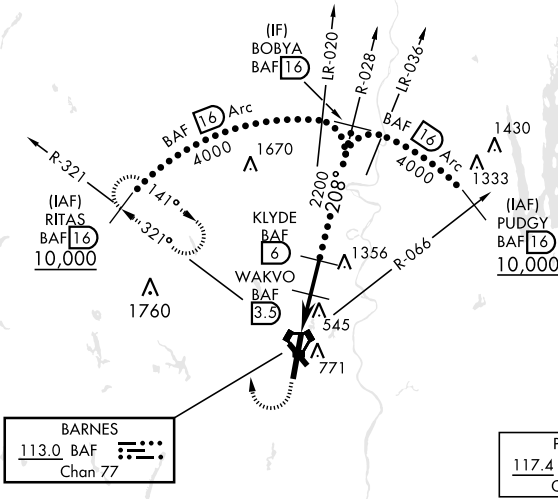
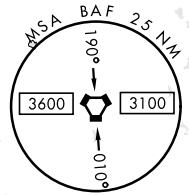
**MISSED APPROACH:** Climb to 1300, then climbing right turn to 4000 via hdg 010° and BAF VORTAC R-321 to RITAS and hold.

ATIS <b>127.1 263.15</b>	BRADLEY APP CON <b>125.35 281.5</b>	WESTFIELD TOWER ★ <b>118.9 (CTAF) 0 251.1</b>	GND CON <b>121.7 289.4</b>
-----------------------------	--	--	-------------------------------

When lcl altimeter setting not received, use Bradley Intl altimeter setting.  
 When VGSI inop, straight-in/circling Rwy 20 NA at night.

•3491

When VGSI inop, circling to Rwy 15, 33 NA at night.



NE-1, 28 NOV 2024 to 26 DEC 2024

NE-1, 28 NOV 2024 to 26 DEC 2024

**EMERG SAFE ALT 100 NM 7000**

1300 ↑	4000 hdg 010°	RITAS R-321 16	VGSI and descent angles not coincident.	BOBYA R-028 16
-----------	------------------	----------------	---	----------------

CATEGORY	C	D	E
S-20*	800/55	533	(600-1¼)
CIRCLING	1160-2¾ 890 (900-2¾)	1160-3 890 (900-3)	1640-3 1370 (1400-3)
BRADLEY INTL ALTIMETER			
S-20**	840-1¾	573	(600-1¾)
CIRCLING	1200-2¾ 930 (1000-2¾)	1200-3 930 (1000-3)	1680-3 1410 (1500-3)

ELEV 270	THRE 267
----------	----------

Rwy 15 ldg 4510'  
Rwy 20 ldg 8919'

REIL Rwy 15  
MIRL Rwy 15-33  
HIRL Rwy 2-20