

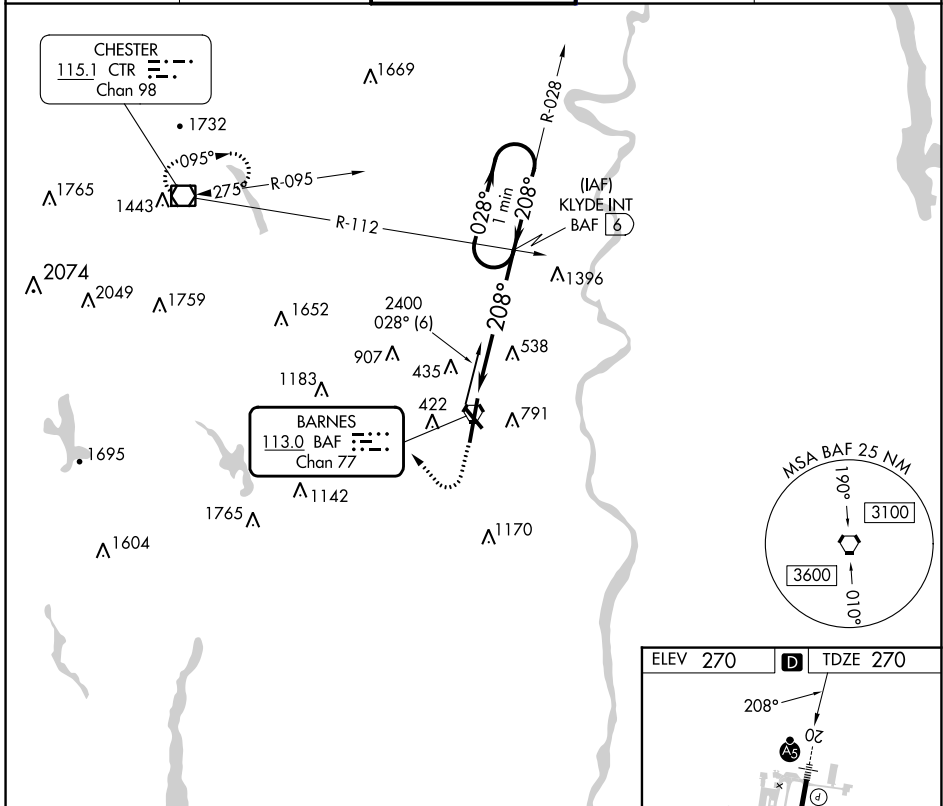
BAF VORTAC 113.0 Chan 77	APP CRS 208°	Rwy Idg 8919 TDZE 270 Apt Elev 270
---------------------------------------	------------------------	---

VOR RWY 20

WESTFIELD-BARNES RGNL (BAF)

-21°C	For inoperative MALS, increase Cat A/B visibility to RVR 5000. Night landing: Rwy 15 NA.	MALS 	MISSED APPROACH: Climb to 1200, then climbing right turn to 4000 direct CTR VOR/DME and hold, continue climb in hold to 4000.
-------	--	----------	---

ATIS 127.1 263.15	BRADLEY APP CON 125.35 281.5	WESTFIELD TOWER* 118.9 (CTAF) 0 251.1	GND CON 121.7 289.4	CLNC DEL 121.7
-----------------------------	--	---	-------------------------------	--------------------------



NE-1, 28 NOV 2024 to 26 DEC 2024

NE-1, 28 NOV 2024 to 26 DEC 2024

1200 	4000 	CTR 	KLYDE INT BAF 6	One Minute Holding Pattern
		VGS and descent angles not coincident (VGS Angle 3.00/TCH 50).		
CATEGORY	A	B	C	D
S-20	940/40	670 (700-3/4)	940/60 670 (700-1 1/4)	940-1 1/2 670 (700-1 1/2)
CIRCLING	1160-1 1/4	890 (900-1 1/4)	1160-2 3/4 890 (900-2 3/4)	1660-3 1390 (1400-3)

ELEV 270		TDZE 270
----------	--	----------

REIL Rwy 15
MIRL Rwy 15-33
HIRL Rwy 2-20