

BAF VORTAC 113.0 Chan 77	APP CRS 025°	Rwy Idg TDZE Apt Elev	9000 264 270
---------------------------------------	------------------------	-----------------------------	---

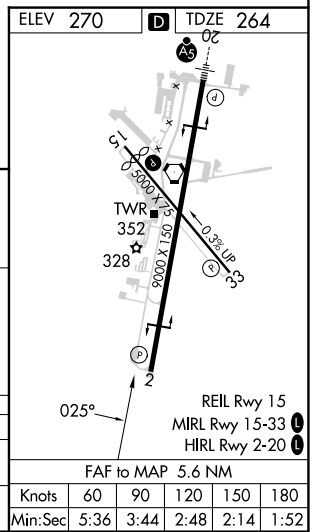
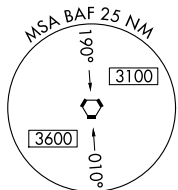
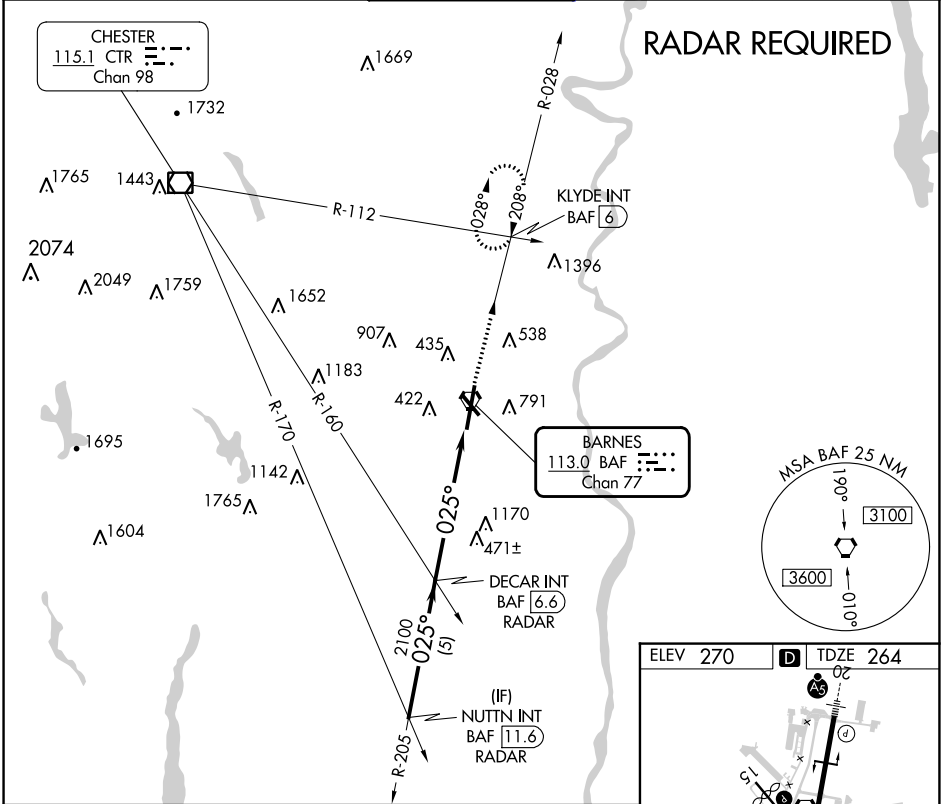
VOR or TACAN RWY 2

WESTFIELD-BARNES RGNL (BAF)

⚠ Night landing: Rwy 15 NA.
❄ Helicopter visibility reduction below ¾ SM NA.

MISSED APPROACH: Climb to 3000 via the BAF VORTAC R-028 to KLYDE INT and hold.

ATIS 127.1 263.15	BRADLEY APP CON 125.35 281.5	WESTFIELD TOWER* 118.9 (CTAF) 0 251.1	GND CON 121.7 289.4	CLNC DEL 121.7
-----------------------------	--	---	-------------------------------	--------------------------



CATEGORY	NUTTN INT BAF 11.6 RADAR		VGSI and descent angles not coincident (VGSI Angle 3.00/TCH 50).		3000	KLYDE INT
	DECAR INT BAF 6.6 RADAR		3.02° TCH 43		2100	
S-2	780-1	516 (600-1)	780-1½ 516 (600-1½)	780-1¾	516 (600-1¾)	
CIRCLING	1160-1¼	890 (900-1¼)	1160-2¾ 890 (900-2¾)	1660-3	1390 (1400-3)	

NE-1, 28 NOV 2024 to 26 DEC 2024

NE-1, 28 NOV 2024 to 26 DEC 2024