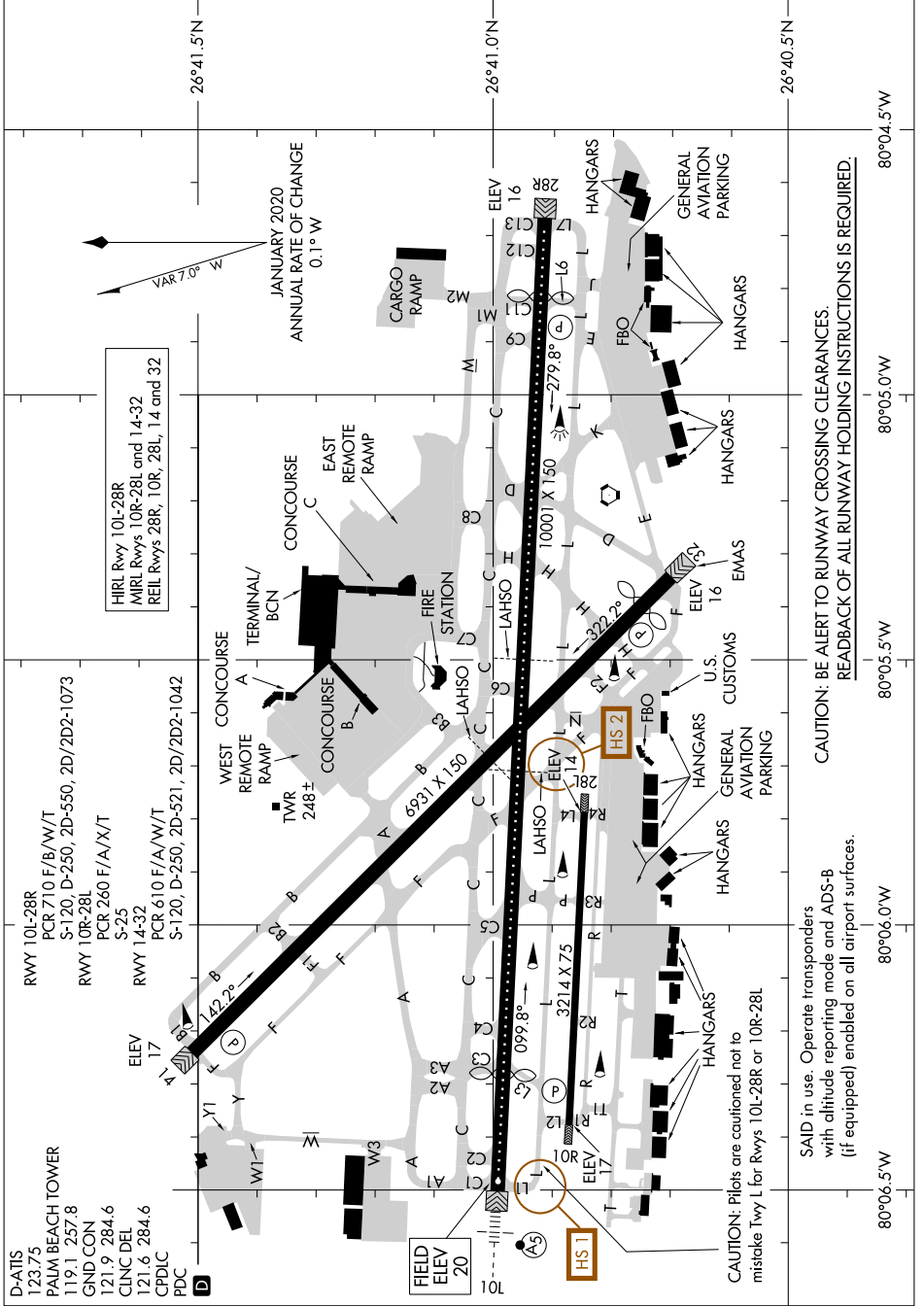


AIRPORT DIAGRAM

AL-449 (FAA)

PALM BEACH INTL (PBI)
WEST PALM BEACH, FLORIDA

SE-3, 28 NOV 2024 to 26 DEC 2024



HIRL Rwy 10L-28R
MIRL Rwys 10R-28L and 14-32
REIL Rwys 28R, 10R, 28L, 14 and 32

VAR 7.0° W
JANUARY 2020
ANNUAL RATE OF CHANGE
0.1° W

CAUTION: BE ALERT TO RUNWAY CROSSING CLEARANCES.
REARBACK OF ALL RUNWAY HOLDING INSTRUCTIONS IS REQUIRED.

SAID in use. Operate transponders with altitude reporting mode and ADS-B (if equipped) enabled on all airport surfaces.
CAUTION: Pilots are cautioned not to mistake Twy L for Rwys 10L-28R or 10R-28L

AIRPORT DIAGRAM

WEST PALM BEACH, FLORIDA
PALM BEACH INTL (PBI)

SE-3, 28 NOV 2024 to 26 DEC 2024