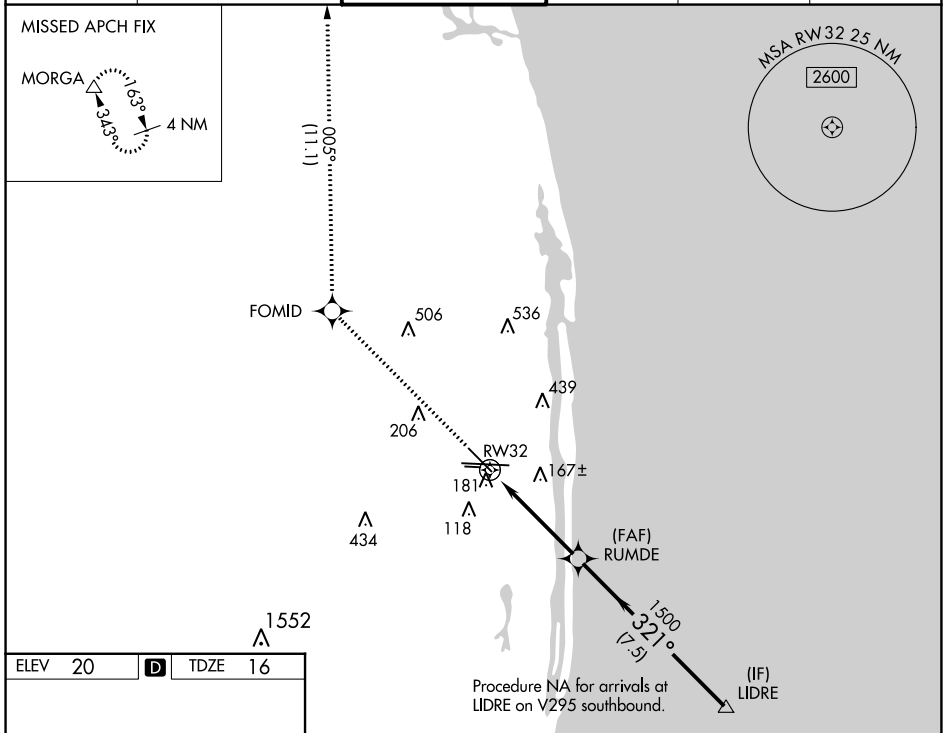


WAAS CH 62903 W32A	APP CRS 321°	Rwy Idg TDZE 16 Apt Elev 20	6513
--	------------------------	---	-------------

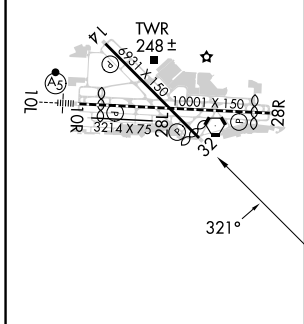
RNAV (GPS) Y RWY 32

PALM BEACH INTL (PBI)

RNP APCH - GPS.			MISSED APPROACH: Climb to 3000 direct FOMID and on track 005° to MORGA and hold.		
<p>▼ Circling to Rwy 10L NA at night. Rwy 32 helicopter visibility reduction below 3/4 SM NA. ▲ For uncompensated Baro-VNAV systems, LNAV/VNAV NA below 6°C or above 54°C.</p>					
D-ATIS 123.75	PALM BEACH APP CON 128.3 317.4	PALM BEACH TOWER 119.1 257.8	GND CON 121.9 284.6	CLNC DEL 121.6 284.6	CPDLC

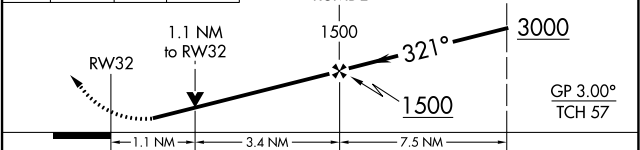


ELEV 20	D	TDZE 16
---------	----------	---------



HIRL Rwy 10L-28R
REIL Rwys 10R, 14, 28L, 28R and 32
MIRL Rwys 14-32 and 10R-28L

3000	FOMID \diamond	tr 005°	MORGA \triangle	VGSI and RNAV glidepath not coincident (VGSI Angle 3.25/TCH 57).
------	------------------	---------	-------------------	--



CATEGORY	A	B	C	D
LPV DA	266-3/4	250 (300-3/4)		
LNAV/VNAV DA	342-1	326 (400-1)		
LNAV MDA	440-1	424 (500-1)	440-1 1/4	424 (500-1 1/4)
C CIRCLING	560-1	540 (600-1)	740-2 720 (800-2)	780-2 1/2 760 (800-2 1/2)

SE-3, 28 NOV 2024 to 26 DEC 2024

SE-3, 28 NOV 2024 to 26 DEC 2024