

TOP ALTITUDE:
Rwy 10L, 14, 28R: 12000
Rwy 32: ASSIGNED BY ATC

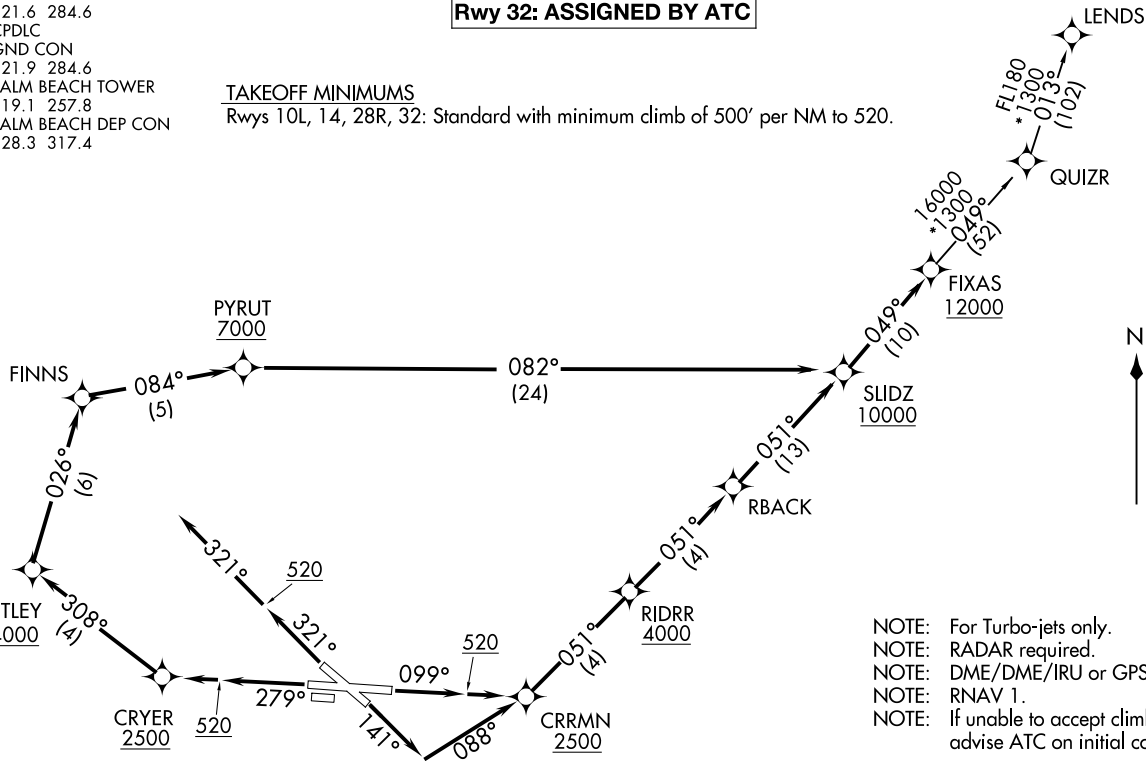
D-ATIS
123.75
CLNC DEL
121.6 284.6
CPDLC
GND CON
121.9 284.6
PALM BEACH TOWER
119.1 257.8
PALM BEACH DEP CON
128.3 317.4

TAKEOFF MINIMUMS

Rwys 10L, 14, 28R, 32: Standard with minimum climb of 500' per NM to 520.

SLIDZ TWO DEPARTURE (RNAV)
(SLIDZ2.SLIDZ) 12AUG21

WEST PALM BEACH, FLORIDA
PALM BEACH INTL (PBI)



- NOTE: For Turbo-jets only.
- NOTE: RADAR required.
- NOTE: DME/DME/IRU or GPS required.
- NOTE: RNAV 1.
- NOTE: If unable to accept climb rates, advise ATC on initial contact.

NOTE: Chart not to scale.

(NARRATIVE ON FOLLOWING PAGE)

(SLIDZ2.SLIDZ) 22195
SLIDZ TWO DEPARTURE (RNAV)

PALM BEACH INTL (PBI)
WEST PALM BEACH, FLORIDA

AL-449 (FAA)

SLIDZ TWO DEPARTURE (RNAV)



DEPARTURE ROUTE DESCRIPTION

TAKEOFF RUNWAY 10L: Climb on heading 099° to 520, then direct to cross CRRMN at or above 2500, then on track 051° to cross RIDRR at or above 4000, then on track 051° to RBACK, then on track 051° to cross SLIDZ at or above 10000, thence. . . .

TAKEOFF RUNWAY 14: Climb on heading 141° to intercept course 088° to cross CRRMN at or above 2500, then on track 051° to cross RIDRR at or above 4000, then on track 051° to RBACK, then on track 051° to cross SLIDZ at or above 10000, thence. . . .

TAKEOFF RUNWAY 28R: Climb on heading 279° to 520, then direct to cross CRYER at or above 2500, then on track 308° to cross UTLEY at or above 4000, then on track 026° to FINNS, then on track 084° to cross PYRUT at or above 7000, then on track 082° to cross SLIDZ at or above 10000, thence. . . .

. . . .on track 049° to cross FIXAS at or above 12000, then on transition.
Expect clearance to filed altitude within 10 minutes after departure.

TAKEOFF RUNWAY 32: Climb on heading 321° to 520, then on heading 321° or as assigned by ATC, for vectors to SLIDZ at or above 10000, thence. . . .

. . . .on track 049° to cross FIXAS at or above 12000, then on transition. Maintain ATC assigned altitude, expect clearance to filed altitude within 10 minutes after departure.

LEND5 TRANSITION (SLIDZ2.LEND5)

SE-3, 28 NOV 2024 to 26 DEC 2024

SE-3, 28 NOV 2024 to 26 DEC 2024