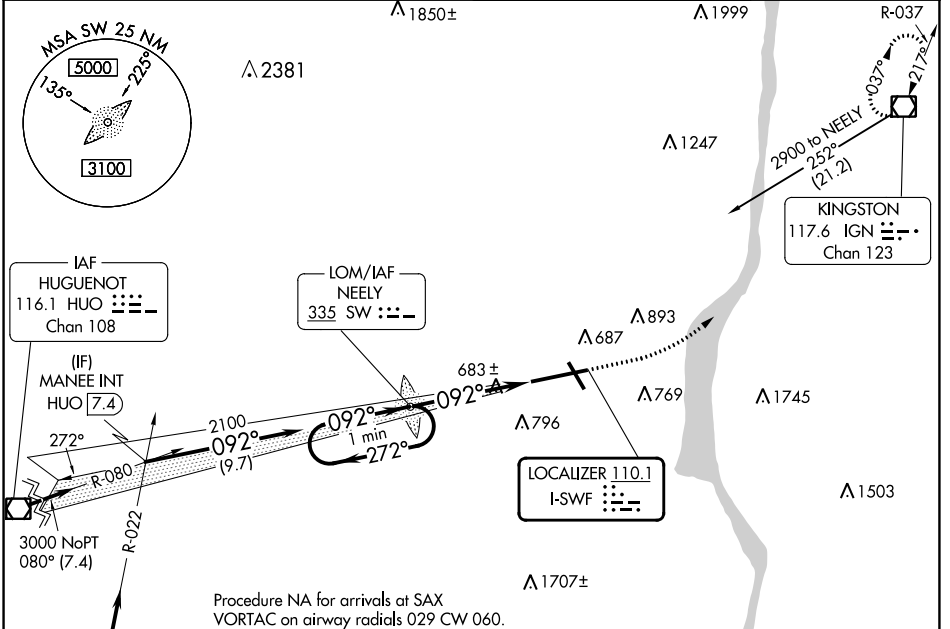


LOC I-SWF <b>110.1</b>	APP CRS <b>092°</b>	Rwy Idg 8817
		TDZE 482
		Apt Elev 491

**ILS RWY 9 (SA CAT I)**  
NEW YORK STEWART INTL (SWF)

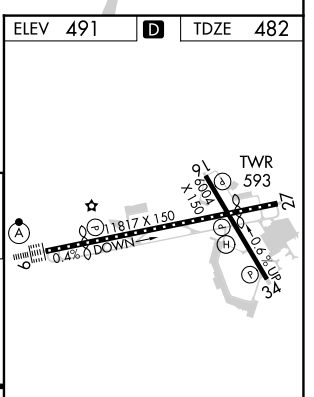
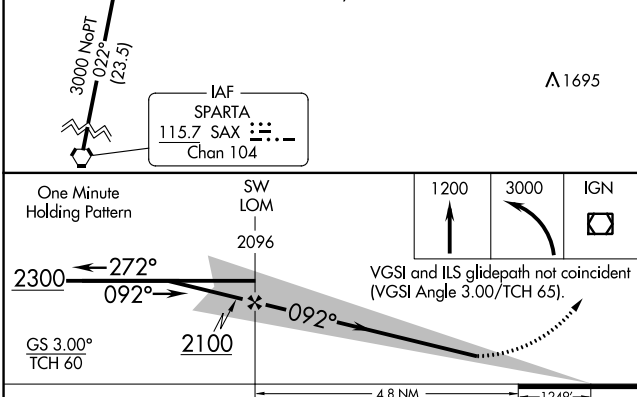
Requires specific OPSPEC, MSPEC, or LOA approval and use of HUD to DH.	ALSIF-2	MISSED APPROACH: Climb to 1200 then climbing left turn to 3000 direct IGN VOR/DME and hold.

ATIS <b>124.575</b>	NEW YORK APP CON <b>132.75 363.1</b>	STEWART TOWER <b>121.0 254.4</b>	GND CON <b>121.9</b>
------------------------	---	-------------------------------------	-------------------------



NE-2, 28 NOV 2024 to 26 DEC 2024

NE-2, 28 NOV 2024 to 26 DEC 2024



CATEGORY	A	B	C	D
S-ILS 9		RA 142/14	150 DA 632	

**SA CATEGORY I ILS - SPECIAL AIRCREW & AIRCRAFT CERTIFICATION REQUIRED**

TDZ/CL Rwy 9  
HIRL Rwys 9-27 and 16-34  
REIL Rwys 16, 27 and 34