

OAK HARBOR, WASHINGTON

RNAV (GPS) RWY 32

| | |
|------------------|------------------|
| APCH CRS 317° | Rwy Idg 8000 |
| | TDZE 47 |
| | Arprt Elev 47 |

- (USN)

WHIDBEY ISLAND NAS (AULT FLD) (KNUW)

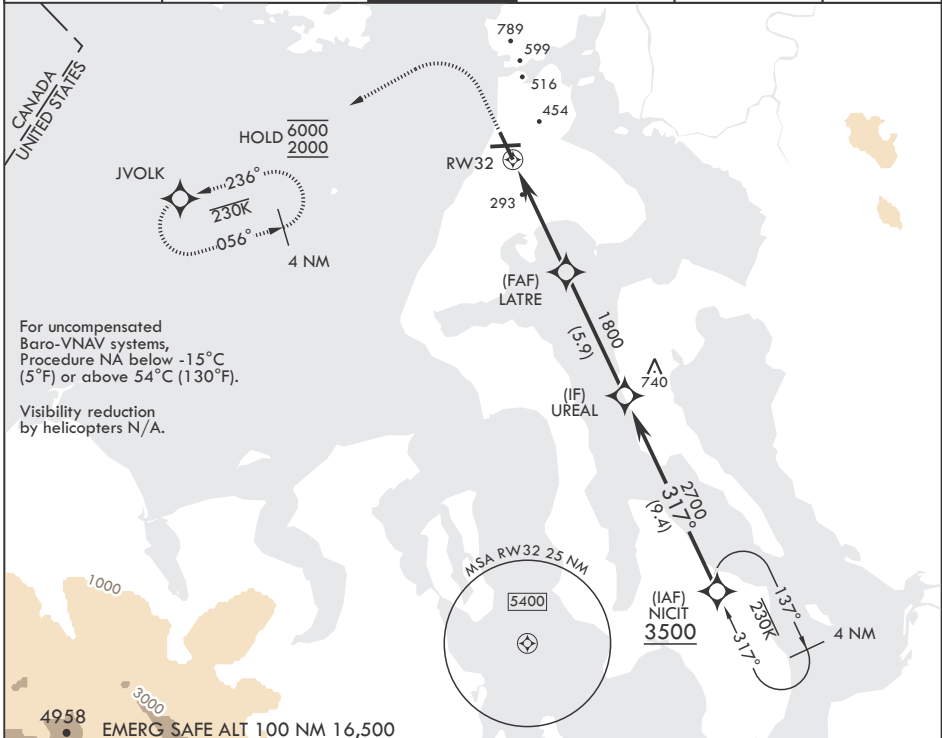
RNP APCH

▼ * When ALS inop, increase vis to 1 3/8 miles.
 ** When ALS inop, increase CAT AB RVR to 55, vis to 1 mile; CAT CDE vis to 1 3/8 miles.

ALSF-2

MISSED APPROACH: Climb to 1200 then climbing left turn to 2000 direct JVOLK and hold.

| | | | | | |
|----------------------|--|----------------------|-------------------------|-------------------------|---------|
| ATIS 134.15 281.5 | APP CON/DEP CON 118.2 285.65 (W) 120.7 270.8 (E) | TOWER 127.9 340.2 | GND CON 121.75 336.4 | CLNC DEL 135.1 379.9 | ASR/PAR |
|----------------------|--|----------------------|-------------------------|-------------------------|---------|

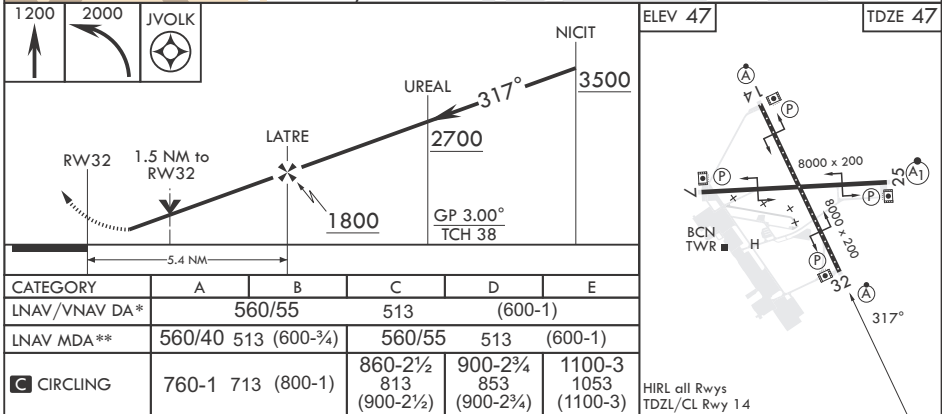


For uncompensated Baro-VNAV systems, Procedure NA below -15°C (5°F) or above 54°C (130°F).

Visibility reduction by helicopters N/A.

NW-1, 28 NOV 2024 to 26 DEC 2024

NW-1, 28 NOV 2024 to 26 DEC 2024



OAK HARBOR, WASHINGTON

48°21'N - 122°39'W

WHIDBEY ISLAND NAS (AULT FLD) (KNUW)

Amdt 2 31OCT24

RNAV (GPS) RWY 32