

OAK HARBOR, WASHINGTON

# TACAN Y RWY 25

WHIDBEY ISLAND NAS (AULT FLD) (KNUW)

TACAN NUV Chan <b>85</b>	APCH CRS <b>254°</b>	Rwy ldg TDZE Arprt Elev <b>8000</b> <b>28</b> <b>47</b>
-----------------------------	-------------------------	--

[UN3]

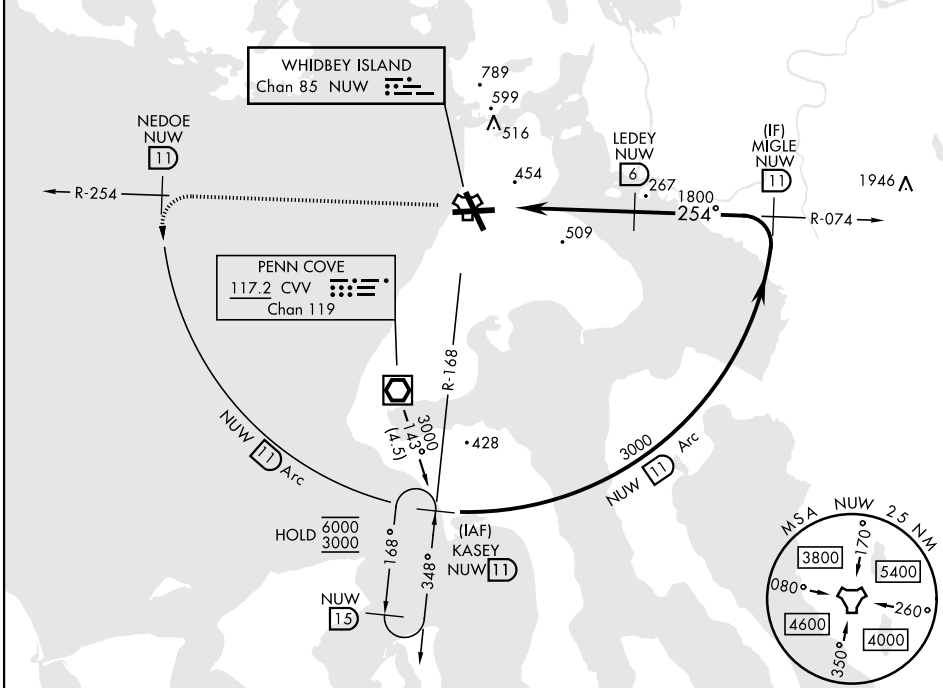
▼ \*When ALS inop, increase CAT AB RVR to 55, vis to 1 mile; CAT CDE vis to 2 miles.



MISSED APPROACH: Climb to 3000 via NUV TACAN R-254 to NEDOE, then arc SW of NUV via 11 DME Arc to KASEY and hold.

ATIS <b>134.15 281.5</b>	WHIDBEY APP CON <b>120.7 270.8 (E)</b> <b>118.2 285.65 (W)</b>	WHIDBEY TOWER <b>127.9 340.2</b>	GND CON <b>121.75 336.4</b>	CLNC DEL <b>135.1 379.9</b>	ASR/PAR
-----------------------------	--	-------------------------------------	--------------------------------	--------------------------------	---------

CAUTION: CAT CDE intmed seg length 5 NM.



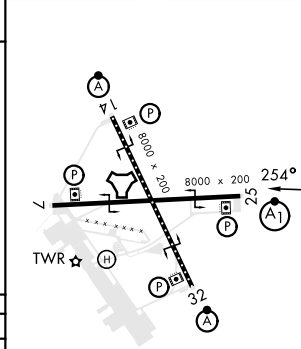
NW-1, 28 NOV 2024 to 26 DEC 2024

NW-1, 28 NOV 2024 to 26 DEC 2024

EMERG SAFE ALT 100 NM 15,500

3000 NUW R-254	NEDOE NUW 11	NUW 11 Arc			
NUW TACAN	KIGVE NUW 1.7	NUW 3	LEDEY NUW 6	MIGLE NUW 11	
0.8		4.3 NM		1800	3000
				254°	3.17°
				TCH 50	
CATEGORY	A	B	C	D	E
S-25*	760/30	732 (800- $\frac{3}{4}$ )	760-1 $\frac{5}{8}$	732 (800-1 $\frac{1}{2}$ )	
CIRCLING	760-1	713 (800-1)	860-2 $\frac{1}{2}$ 813 (900-2 $\frac{1}{2}$ )	900-2 $\frac{3}{4}$ 853 (900-2 $\frac{3}{4}$ )	1200-3 1153 (1200-3)

ELEV	47	TDZE	28
------	----	------	----



HIRL Rwy 7-25, 14-32  
TDZL/CL Rwy 14

OAK HARBOR, WASHINGTON

48° 21' N-122° 39' W

WHIDBEY ISLAND NAS (AULT FLD) (KNUW)

Amdt 4 31OCT24

# TACAN Y RWY 25