

ILS or LOC RWY 19R

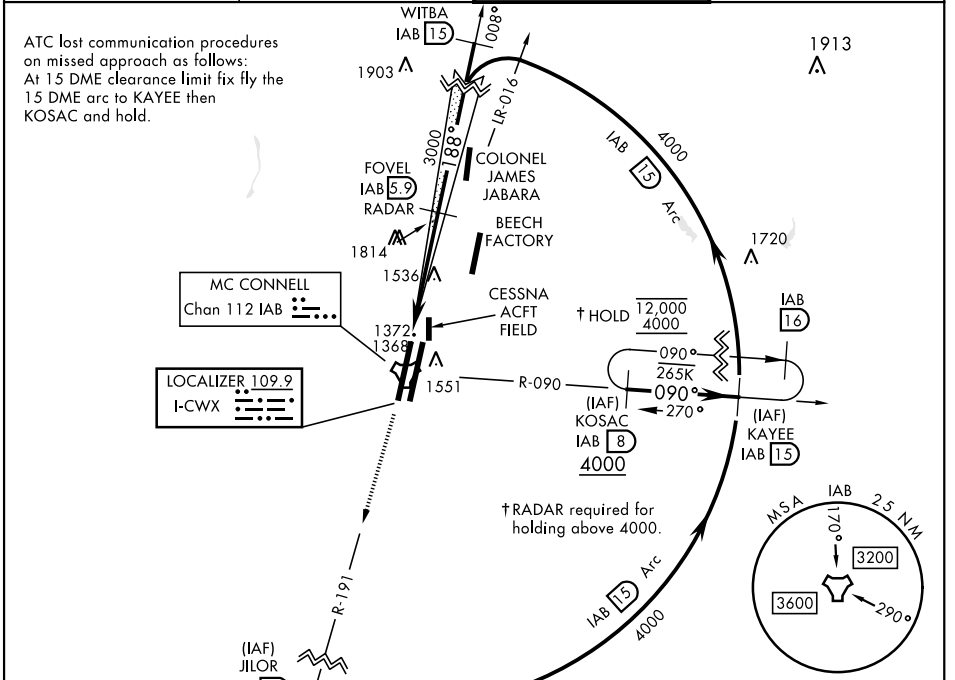
LOC I-CWX 109.9	APCH CRS 188°	Rwy Ildg 19R 12,000 19L 12,007 TDZE 19R 1372 19L 1365 Arprt Elev 1372
---------------------------	-------------------------	--

[USAF]

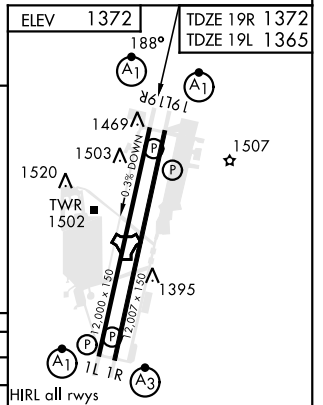
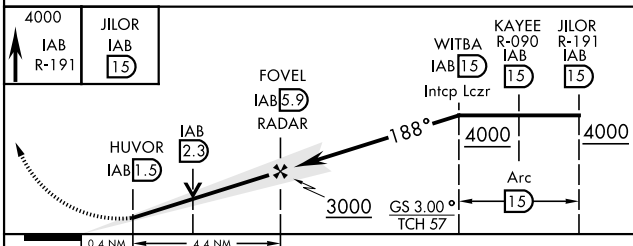
MC CONNELL AFB (KIAB)

RADAR or DME required	ALSIF-1 	MISSED APPROACH: Climb to 4000 via IAB TACAN R-191 to 15 DME (JILOR). Expect further clearance from ATC.
-----------------------	--	--

D-ATIS 124.65 269.9	WICHITA APP CON 134.8 269.1	TOWER 127.25 291.775	GND CON 118.0 275.8
-------------------------------	---------------------------------------	--------------------------------	-------------------------------



EMERG SAFE ALT 100 NM 4000



CATEGORY	A	B	C	D	E
S-ILS 19R *	1572/24		200	(200-1/2)	
S-LOC 19R **	1820/24	448 (500-7%)	1820/45	448 (500-7%)	
SIDESTEP 19L	1820/55	455 (500-1)	1820-13/8	455 (500-13/8)	
*** CIRCLING	1900-1	528 (600-1)	1900-1 1/2	2400-3	1028 (1100-3)

HIRL all rwys	FAF to MAP 4.4 NM				
Knots	60	90	120	150	180
Min:Sec	4:24	2:56	2:12	1:46	1:28

ILS or LOC RWY 19R

NC-2, 28 NOV 2024 to 26 DEC 2024

NC-2, 28 NOV 2024 to 26 DEC 2024