

# RNAV (GPS) RWY 1R

APCH CRS	Rwy Idg	12,007
005°	TDZE	1347
	Arpt Elev	1372

- (USAF)

MC CONNELL AFB (KIAB)

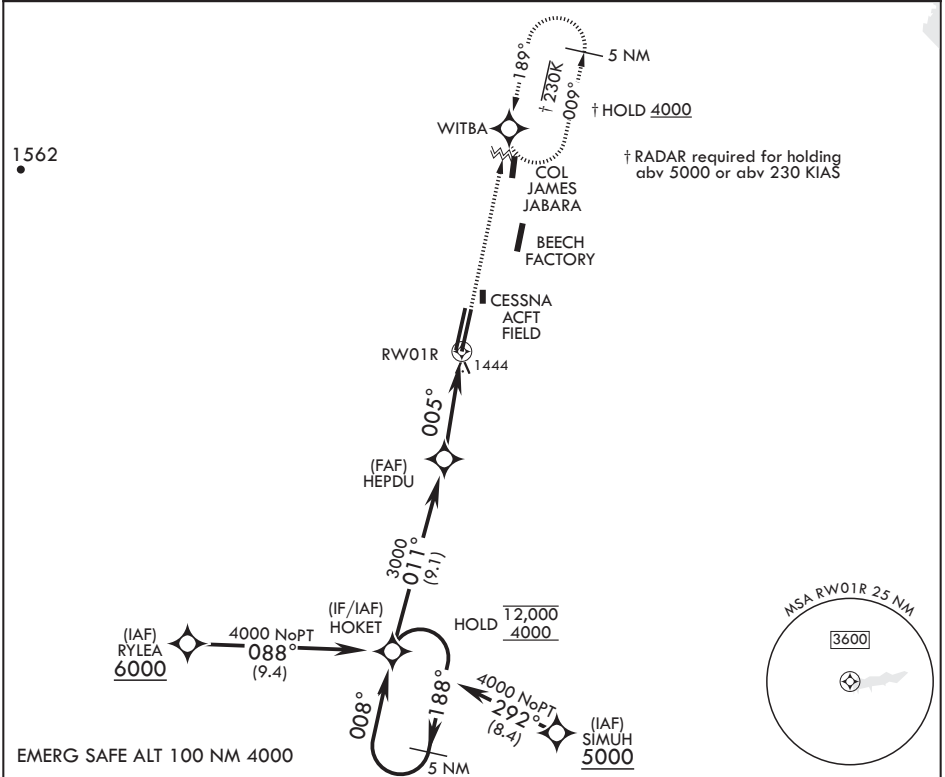
DME/DME RNP-0.3 NA

▼ \* When ALS inop, increase CAT AB RVR to 55, vis to 1 mile; CAT CDE RVR to 60, vis to 1 1/8 miles.  
 \*\* Circling not authorized west of Rwy 1L-19R.



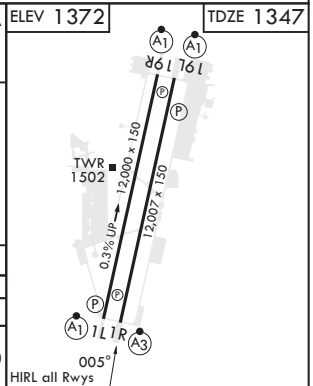
MISSED APPROACH: Climbing right turn to 4000 direct WITBA and hold.

D-ATIS <b>124.65 269.9</b>	WICHITA APP CON <b>134.8 269.1</b>	TOWER <b>127.25 291.775</b>	GND CON <b>118.0 275.8</b>
-------------------------------	---------------------------------------	--------------------------------	-------------------------------



EMERG SAFE ALT 100 NM 4000

5 NM Holding Pattern		4000	WITBA	ELEV 1372	TDZE 1347
CATEGORY	A	B	C	D	E
LNAV MDA*	1740/40		393	(400-3/4)	
☐ CIRCLING**	1900-1 528 (600-1)		1900-1½ 528 (600-1½)	2400-3 1028 (1100-3)	



# RNAV (GPS) RWY 1R

NC-2, 28 NOV 2024 to 26 DEC 2024

NC-2, 28 NOV 2024 to 26 DEC 2024