

# HI-TACAN RWY 15R

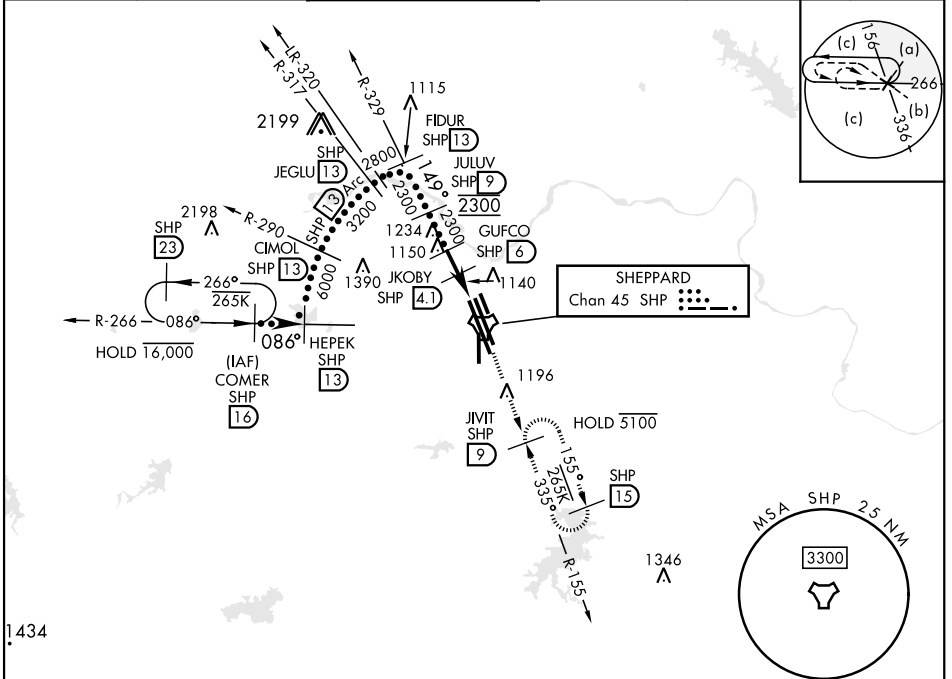
TACAN SHP Chan <b>45</b>	APCH CRS <b>149°</b>	Rwy ldg <b>13,101</b> TDZE <b>998</b> Arprt Elev <b>1019</b>
-----------------------------	-------------------------	---

[USAF]

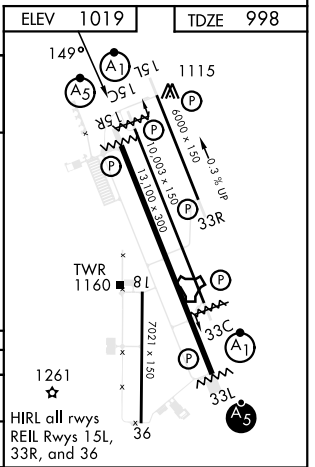
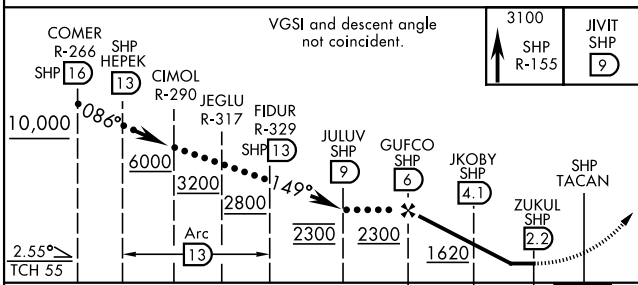
SHEPPARD AFB/WICHITA FALLS MUNI (KSPS)

<b>▼</b> * When ALS inop, increase CAT CDE vis to 1¼ miles. ** Circling not authorized W of Rwy 15R-33L.	MALS R <b>(A5)</b>	MISSED APPROACH: Climb and maintain 3100, intercept SHP TACAN R-155 to SHP R-155/9 DME (JIVIT) and hold.

ATIS ★ <b>132.05 269.9</b>	APP CON <b>118.2 269.025</b>	TOWER ★ <b>119.75 0 279.525</b> (CTAF)	GND CON <b>125.5 289.4</b>	CLNC DEL <b>121.2 282.225</b>	ASR
-------------------------------	---------------------------------	---	-------------------------------	----------------------------------	-----



CAUTION:  
Do not confuse parallel taxiway with Rwy 15R-33L.  
EMERG SAFE ALT 100 NM 4600



CATEGORY	C		D		E
S-15R*	1420-¾		422	(500-¾)	
CIRCLING**	1480-1½ 461 (500-1½)	2020-3 1001 (1100-3)	2080-3 1061 (1100-3)		

# HI-TACAN RWY 15R

SC-2, 28 NOV 2024 to 26 DEC 2024

SC-2, 28 NOV 2024 to 26 DEC 2024