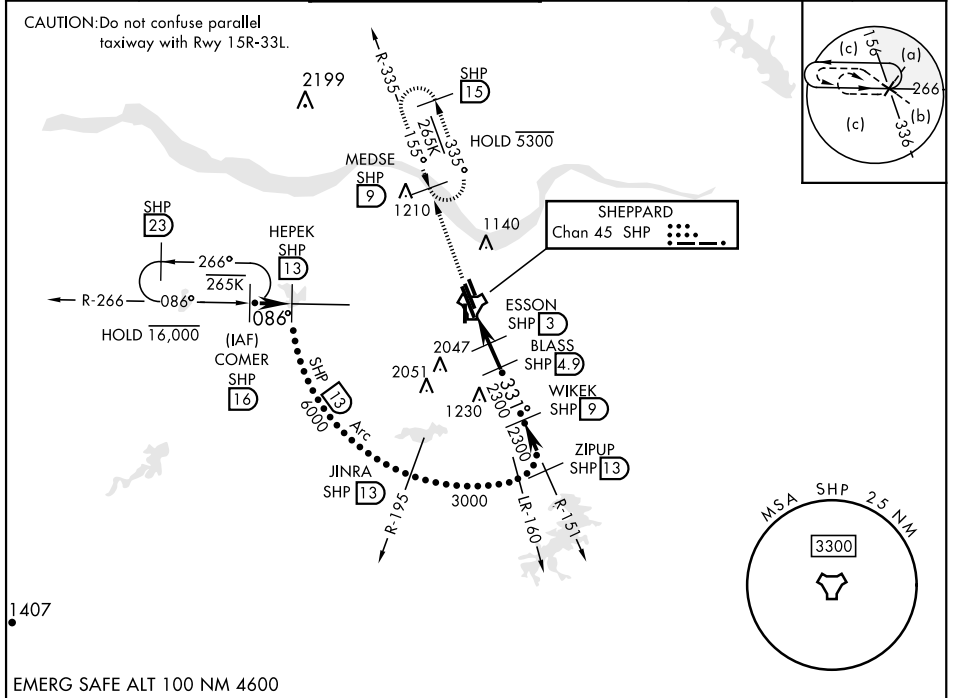


HI-TACAN RWY 33C

TACAN SHP Chan 45	APCH CRS 331°	Rwy ldg 10,003 TDZE 989 Arprt Elev 1019	[USAF]	SHEPPARD AFB/WICHITA FALLS MUNI (KSPS)
----------------------	------------------	--	--------	--

▼ * When ALS inop, increase CAT CDE vis to 1 mile.
 ** Circling not authorized W of Rwy 15R-33L.

ATIS *	APP CON	TOWER *	GND CON	CLNC DEL	ASR
132.05 269.9	118.2 269.025	119.75 0 279.525 (CTAF)	125.5 289.4	121.2 282.225	



EMERG SAFE ALT 100 NM 4600

COMER R-266 SHP 16 HEPEK SHP 13 JINRA R-195 SHP 13 ZIPUP R-151 SHP 13 BLASS SHP 4.9 WIKEK SHP 9 ESSON SHP 3 SHP TACAN KUPRE SHP 0.7 10,000 086° 6000 3000 2300 2300 1620 331° 2.51° TCH 48 0.9 2.3 NM 1.9 NM	VGSI and descent angles not coincident. 3300 SHP R-335 MEDSE SHP 9	ELEV 1019	TDZE 989
	HIRL all rwys REIL Rwys 15L, 33R, and 36		
CATEGORY	C	D	E
S-33C *	1340-5%	351 (400-5%)	
CIRCLING **	1480-1½ 461 (500-1½)	2020-3 1001 (1100-3)	2080-3 1061 (1100-3)

HI-TACAN RWY 33C

SC-2, 28 NOV 2024 to 26 DEC 2024

SC-2, 28 NOV 2024 to 26 DEC 2024