

RNAV (GPS) RWY 15C

APCH CRS 153°	Rwy Idg 10.003 TDZE 1003 Arprt Elev 1019
-------------------------	---------------------------------------------------------------------

[USAF]

SHEPPARD AFB/WICHITA FALLS MUNI (KSPS)

RNP APCH-GPS

ALSIF-1

MISSED APPROACH: Climb to 3100 direct DILGR and hold.

▼ * When ALS inop, increase vis to ¾ mile.
** When ALS inop, increase CAT AB vis to 1 mile, CAT CDE vis to 1½ miles.

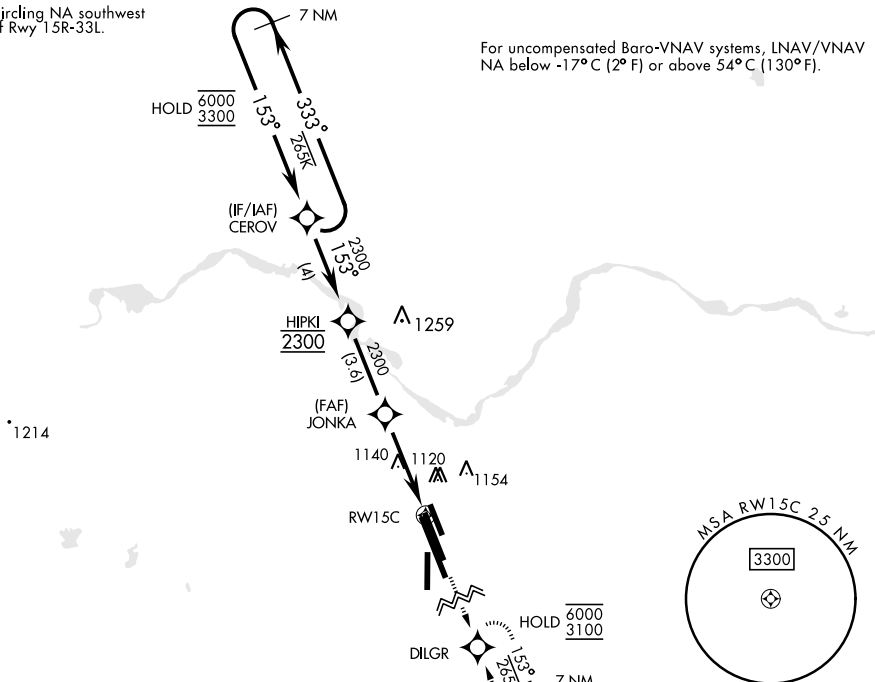
ATIS ★ 132.05 269.9	APP CON 118.2 269.025	TOWER ★ 119.75 0 279.525 (CTAF)	GND CON 125.5 289.4	CLNC DEL 121.2 282.225	ASR
-------------------------------	---------------------------------	-------------------------------------------	-------------------------------	----------------------------------	-----

*** Circling NA southwest of Rwy 15R-33L.

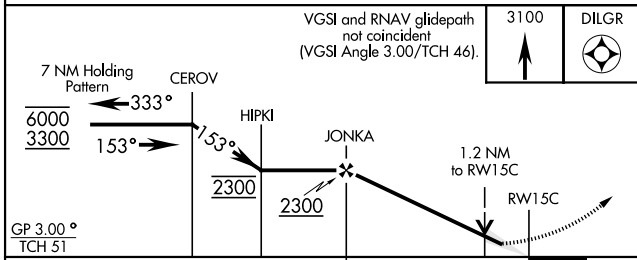
For uncompensated Baro-VNAV systems, LNAV/VNAV NA below -17°C (2° F) or above 54°C (130° F).

SC-2, 28 NOV 2024 to 26 DEC 2024

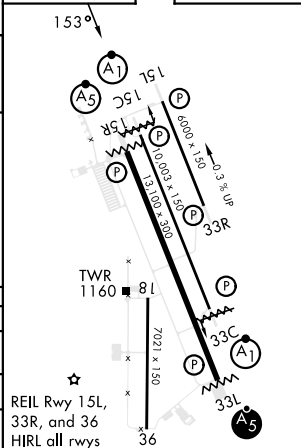
SC-2, 28 NOV 2024 to 26 DEC 2024



EMERG SAFE ALT 100 NM 4600



ELEV	1019	TDZE	1003
------	------	------	------



CATEGORY	A	B	C	D	E
LNAV/VNAV DA*	1266-½ 263 (300-½)	1277-½ 274 (300-½)	1285-½ 282 (300-½)	1296-½ 293	300-½
LNAV MDA**	1420-½ 401 (500-1)	417 461 (500-1)	1420-¾ 461 (500-1½)	417 1001 (1100-3)	500-¾ 1061 (1100-3)

RNAV (GPS) RWY 15C